

Will The Door Of Mercy Be Closed?

When once the master of the house is risen up, and has shut to the door, and you begin to stand without, and to knock at the door, saying, Lord, Lord, open to us; and he shall answer and say to you, I know you not from where you are: - Lk. 13:25

E♭ - 2 - MI

Tillit S. Teddlie

Tillit S. Teddlie, 1923

Public Domain

HymnsToGod.org

1. There's a sol-lemn call from the voice-less dead,

To the soul in sin re - posed;

Musical notation for the first system, treble clef. The key signature has two flats (B-flat and E-flat). The melody consists of quarter notes: G4, A4, B-flat4, C5, B-flat4, A4, G4. The accompaniment consists of quarter notes: G3, B-flat3, C4, D4, E-flat4, G4. The final measure features a fermata over a G4 note.

'Tis an aw - ful cry from a soul con-demned,

Musical notation for the first system, bass clef. The key signature has two flats (B-flat and E-flat). The melody consists of quarter notes: G3, A3, B-flat3, C4, B-flat3, A3, G3. The accompaniment consists of quarter notes: G3, B-flat3, C4, D4, E-flat4, G4. The final measure features a fermata over a G3 note.

Musical notation for the second system, treble clef. The key signature has two flats (B-flat and E-flat). The melody consists of quarter notes: G4, A4, B-flat4, C5, B-flat4, A4, G4. The accompaniment consists of quarter notes: G3, B-flat3, C4, D4, E-flat4, G4. The final measure features a fermata over a G4 note.

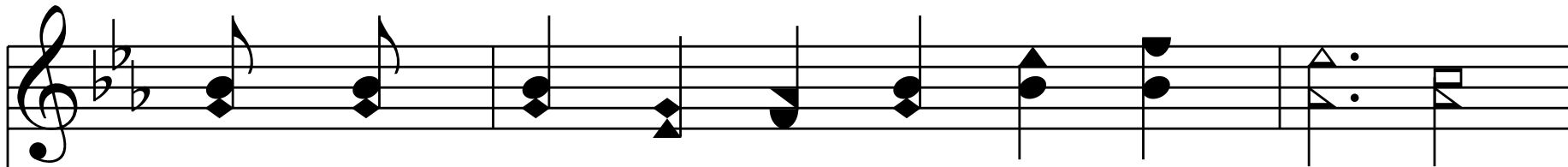
With the door of mer - cy closed.

Musical notation for the second system, bass clef. The key signature has two flats (B-flat and E-flat). The melody consists of quarter notes: G3, A3, B-flat3, C4, B-flat3, A3, G3. The accompaniment consists of quarter notes: G3, B-flat3, C4, D4, E-flat4, G4. The final measure features a fermata over a G3 note.

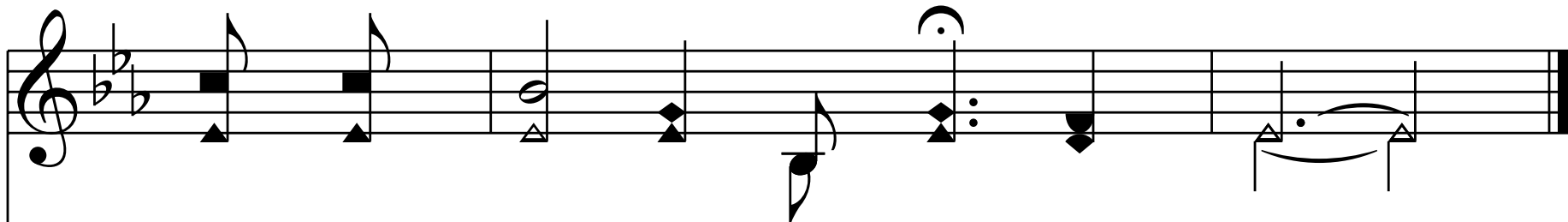
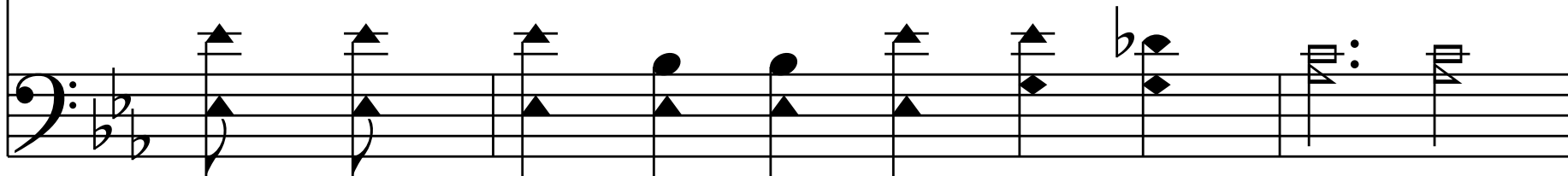
Chorus

Will the door _____ be closed? _____
door of God's mer-cy for - ev - er - be closed?

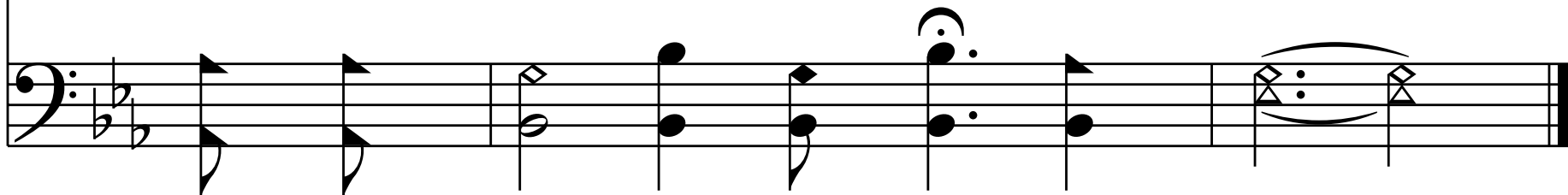
Will the door of mer - cy be closed? _____
for ev - er be closed?



When you stand be - fore God in the judg - ment,



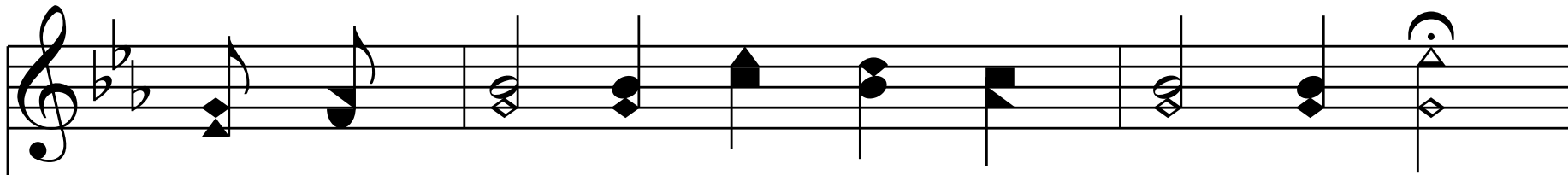
Will the door of mer - cy be closed?



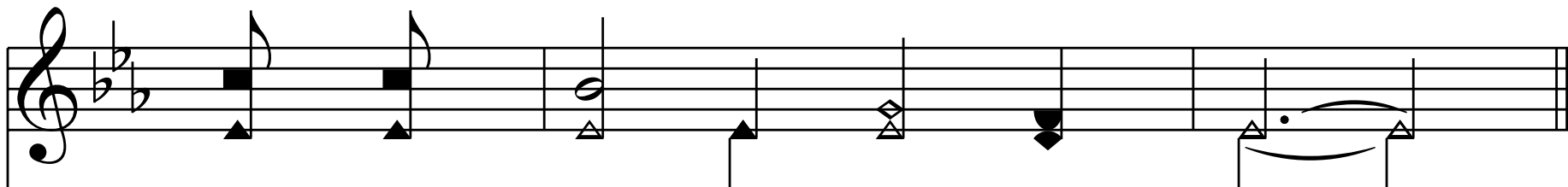
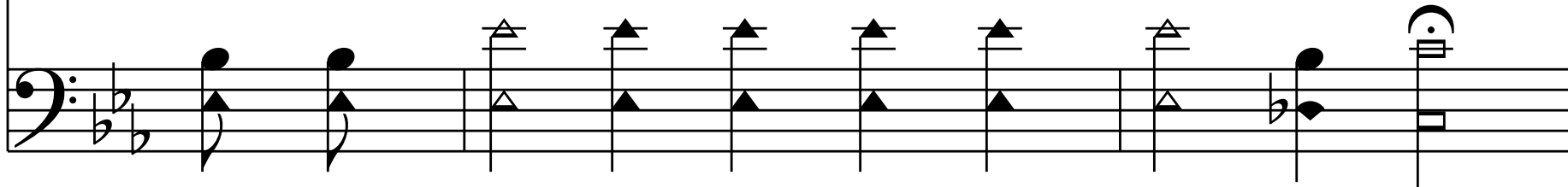
End of Verse 1

2. Are you drift-ing on from the Fa-ther's house

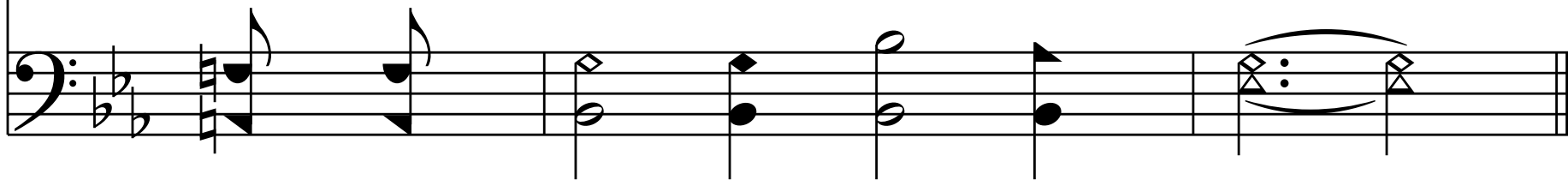
To the darts of sin ex-posed?



To the sad, sad night of re - morse and gloom,



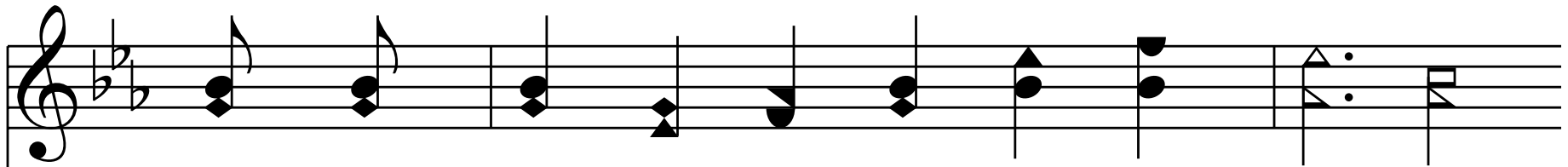
With the door of mer - cy closed?



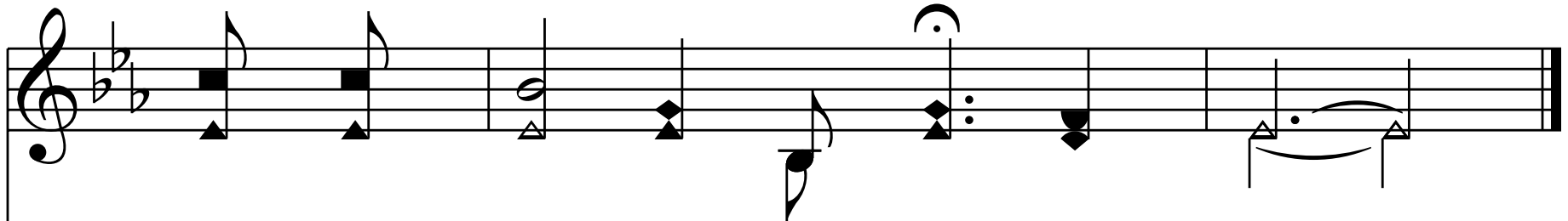
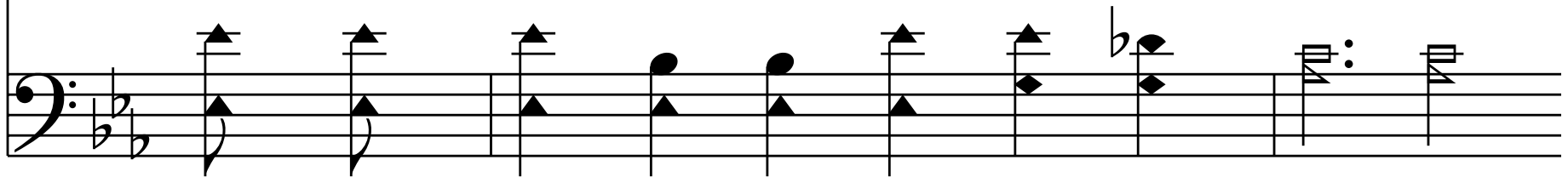
Chorus

Will the door _____ be closed? _____
door of God's mer-cy for - ev - er - be closed?

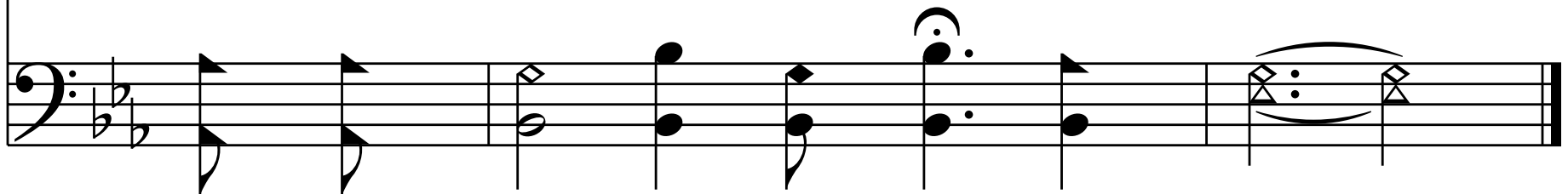
Will the door of mer - cy be closed? _____
for ev - er be closed?



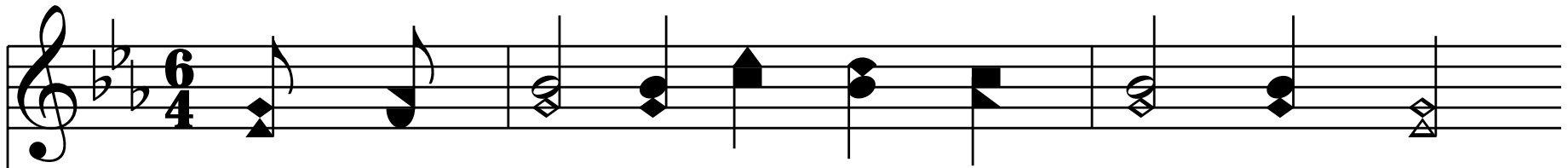
When you stand be - fore God in the judg - ment,



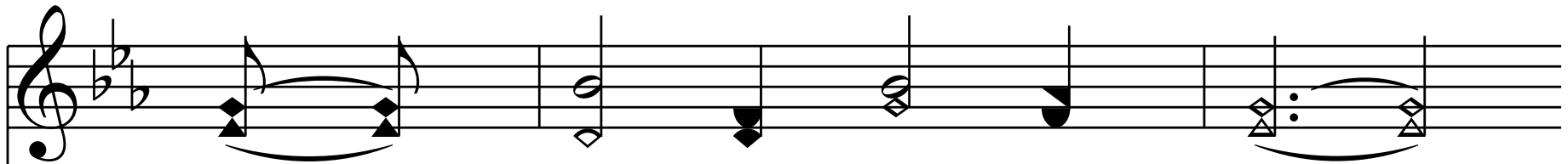
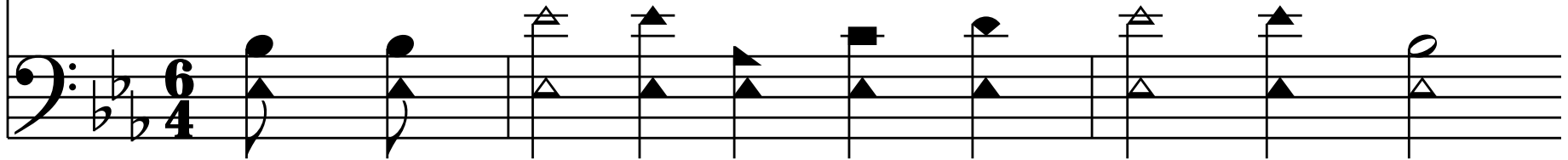
Will the door of mer - cy be closed?



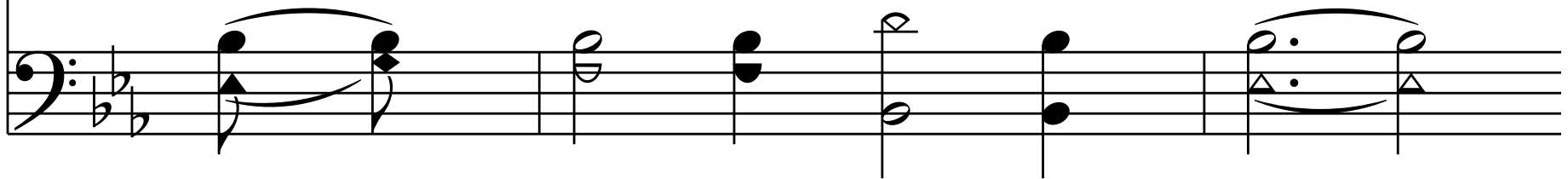
End of Verse 2

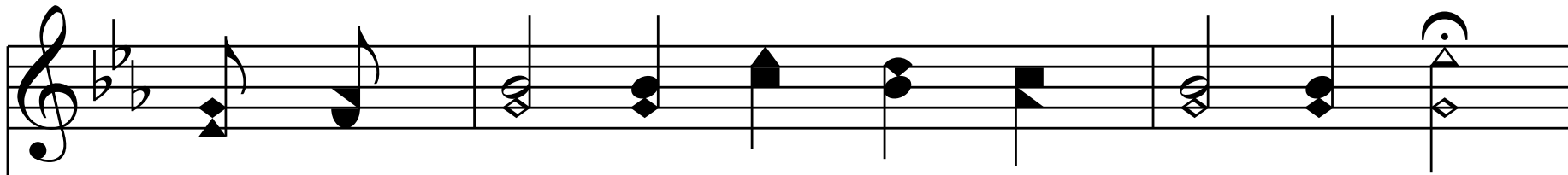


3. Will you turn a - way from the down-ward course,

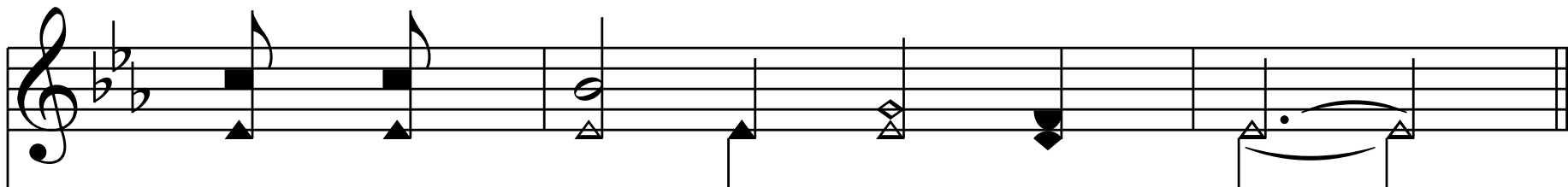
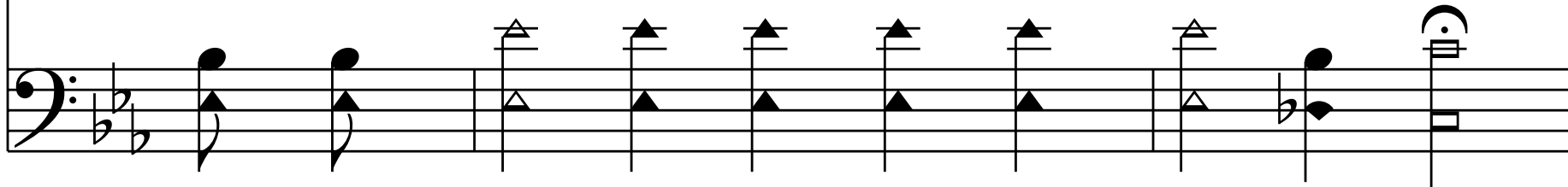


Where death is self - im - posed?

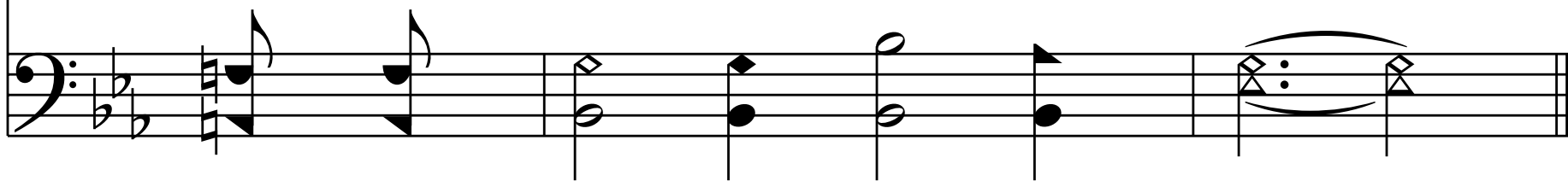




Will you turn to God, or re - ject His love?



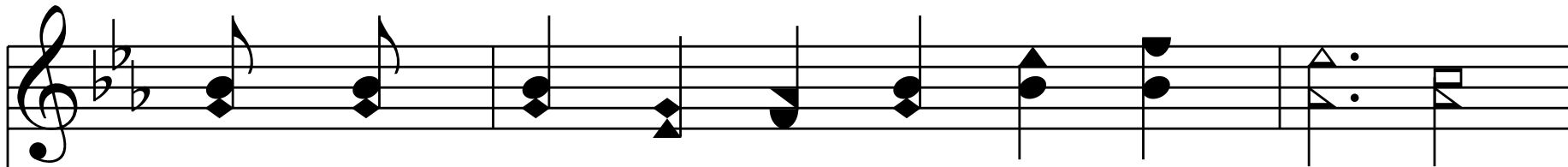
Will the door for you be closed?



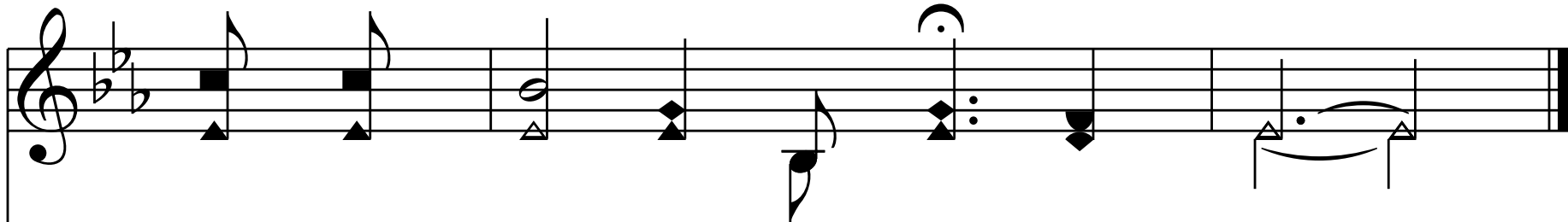
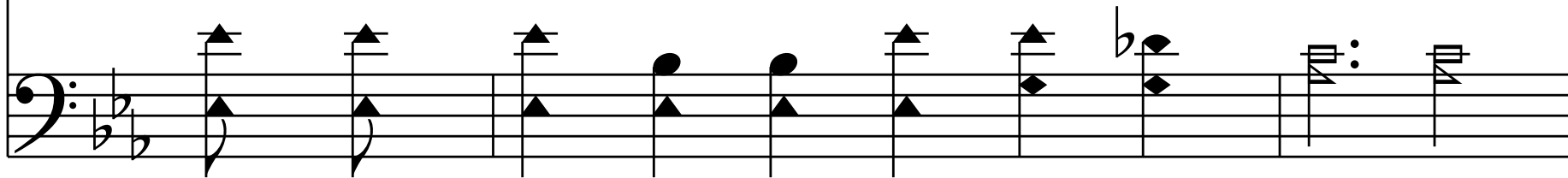
Chorus

Will the door _____ be closed? _____
door of God's mer-cy for - ev - er - be closed?

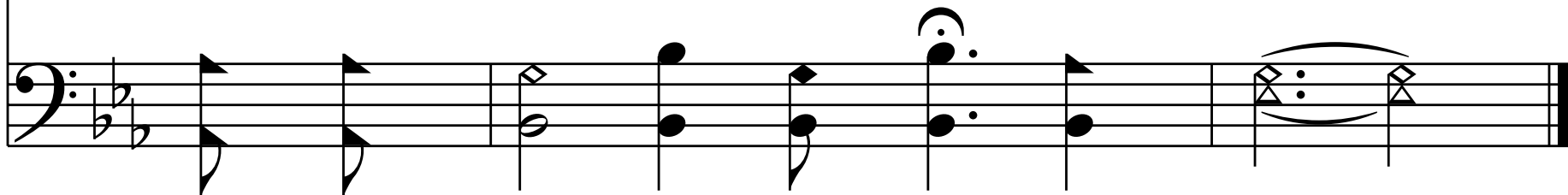
Will the door of mer - cy be closed? _____
for ev - er be closed?



When you stand be - fore God in the judg - ment,



Will the door of mer - cy be closed?



End of Hymn