

# Why Not Now?

*Behold, now is the accepted time. - 2 Cor. 6:2*

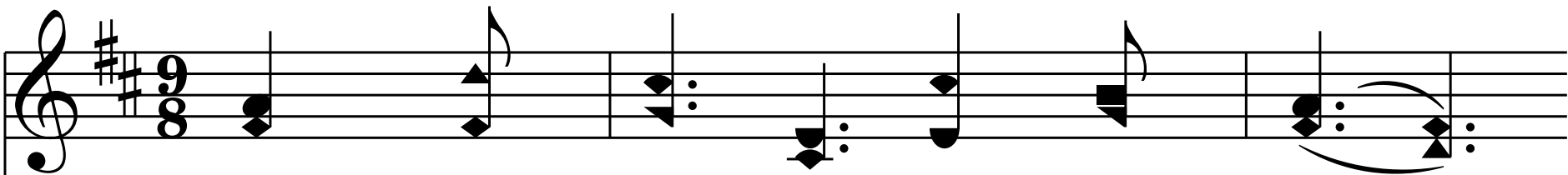
D - 3 - SOL

El Nathan (Daniel Webster Whittle), 1891

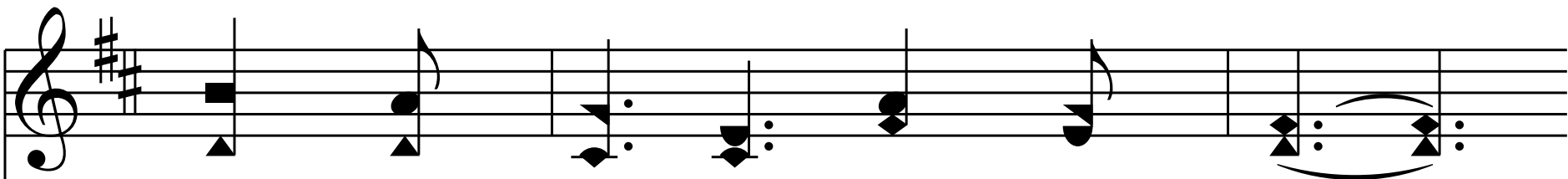
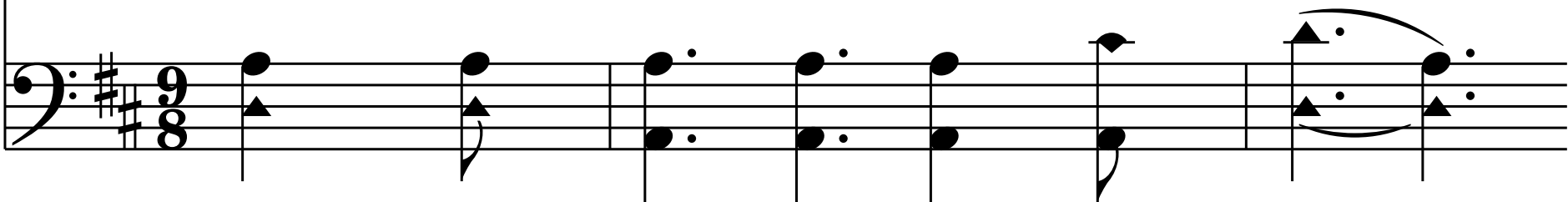
Charles Clinton Case, 1891

Public Domain

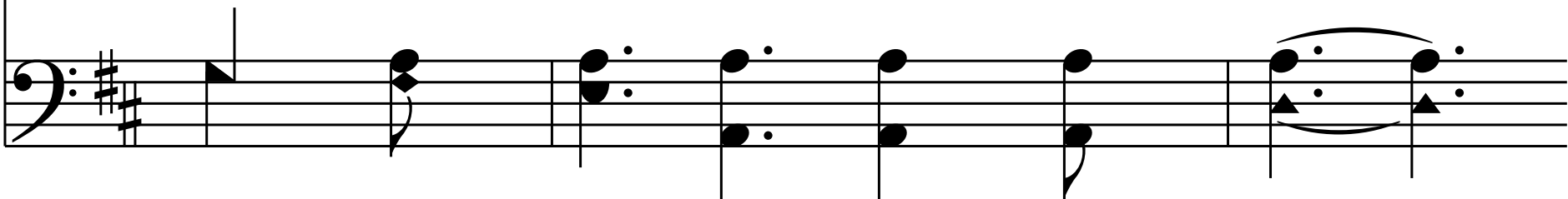
HymnsToGod.org

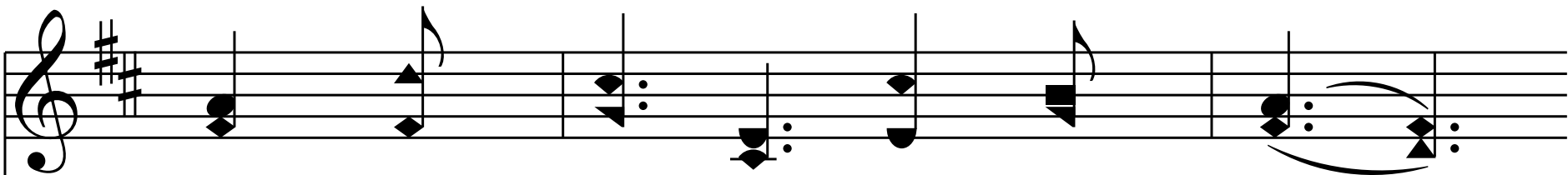


1. While we pray, and while we plead;

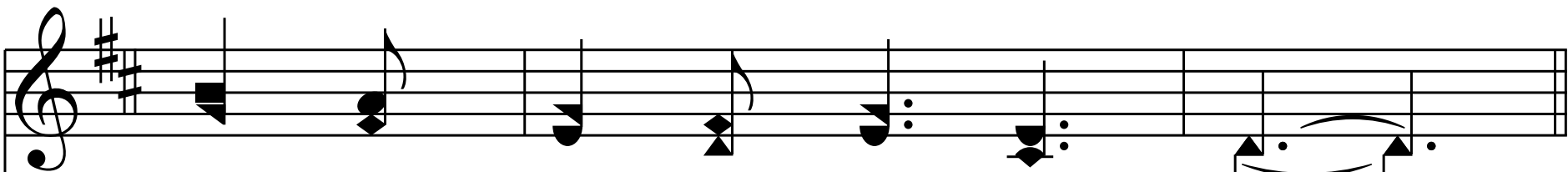
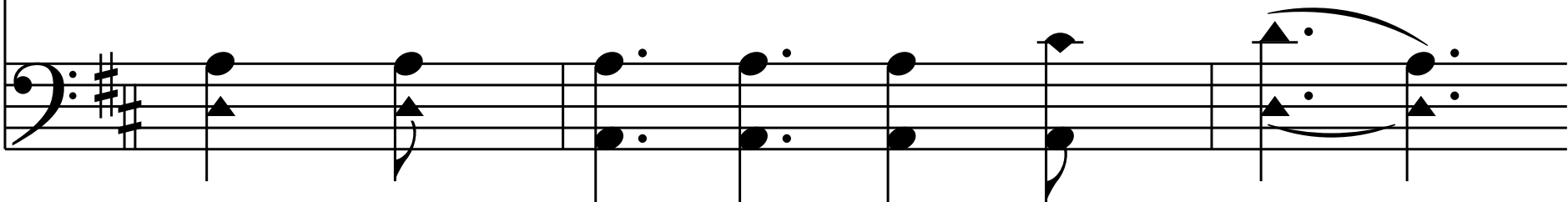


While you see your soul's deep need,

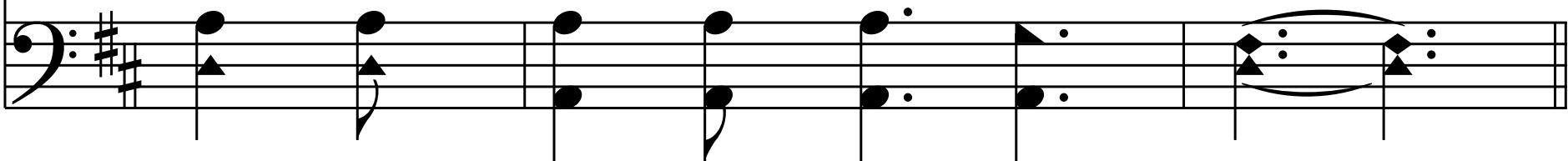




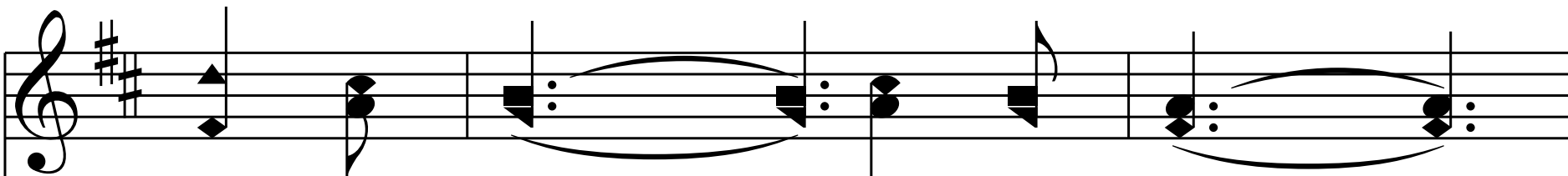
While your Fa - ther calls you home,



Will you not, dear sin - ner, come?

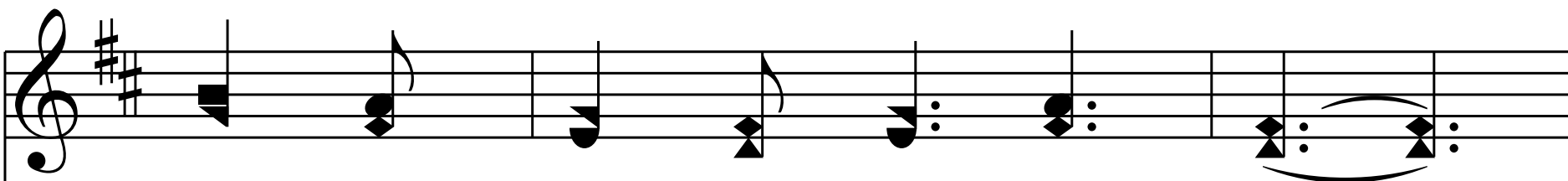
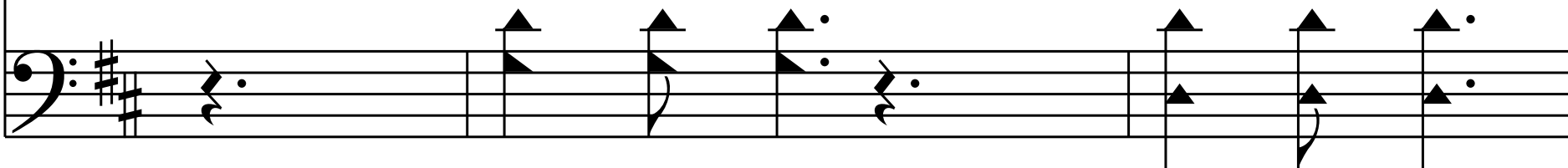


*Chorus*

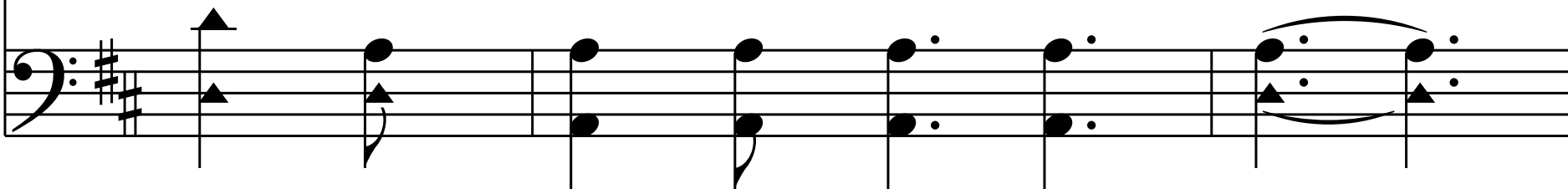


Why not now? \_\_\_\_\_ why not now? \_\_\_\_\_

Why not now? why not now?



Why not come to Je - sus now?



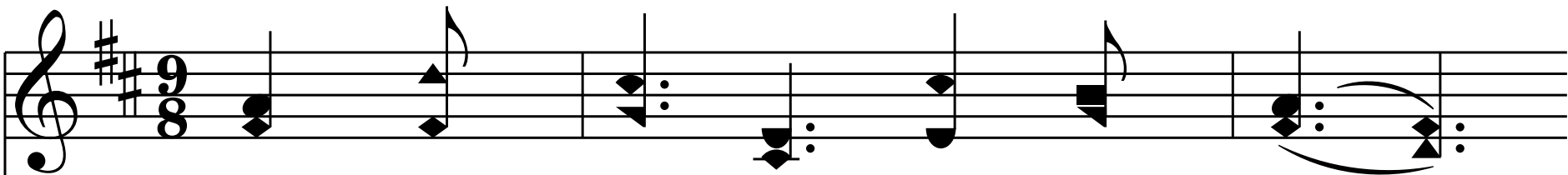
Why not now? \_\_\_\_\_ why not now? \_\_\_\_\_  
Why not now? why not now?

This musical system consists of two staves in G major (one sharp). The treble staff contains a melody with eighth and quarter notes, including two measures with ties. The bass staff provides a harmonic accompaniment with eighth and quarter notes, also featuring ties in the final two measures.

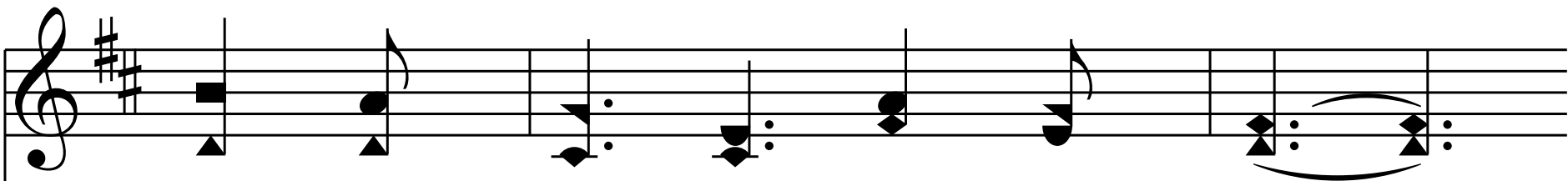
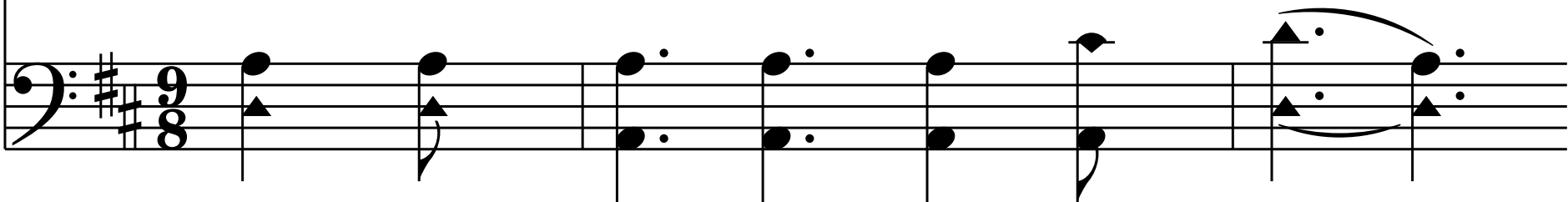
Why not come to Je - sus now?

This musical system continues the melody and accompaniment. The treble staff melody concludes with a half note and a quarter note. The bass staff accompaniment concludes with a half note and a quarter note. Both staves end with a double bar line.

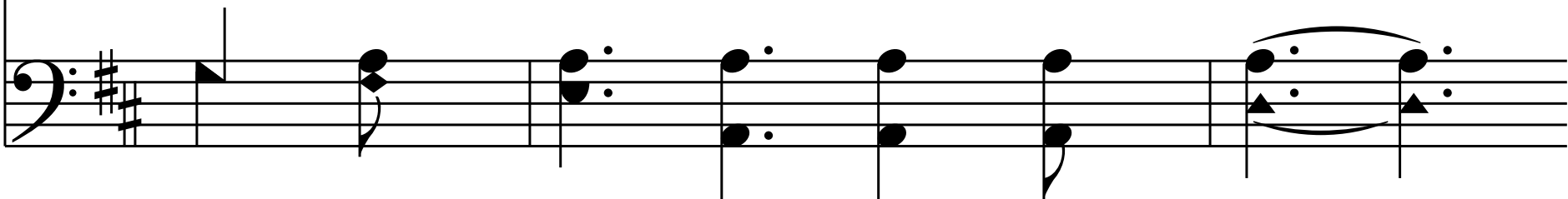
End of Verse 1



2. You have wan-dered for a - way;



Do not risk an - oth - er day,



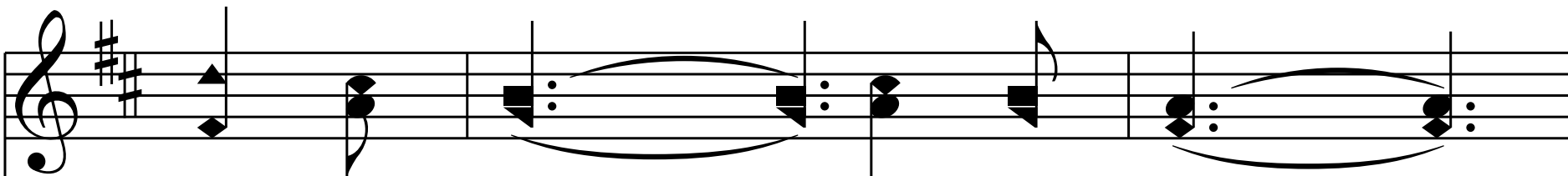
Do not turn from God your face,

This block contains the first line of a musical score. It features a treble and bass staff in the key of D major (two sharps). The treble staff begins with a treble clef and a key signature of two sharps. The melody consists of eighth and quarter notes, with a final measure containing a half note and a quarter note tied to the next line. The bass staff begins with a bass clef and a key signature of two sharps. The accompaniment consists of quarter and half notes, with a final measure containing a half note and a quarter note tied to the next line. The lyrics "Do not turn from God your face," are written below the staves.

But to - day ac - cept His grace.

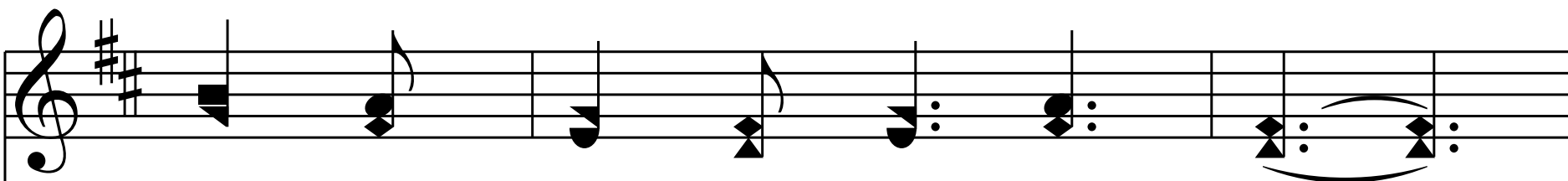
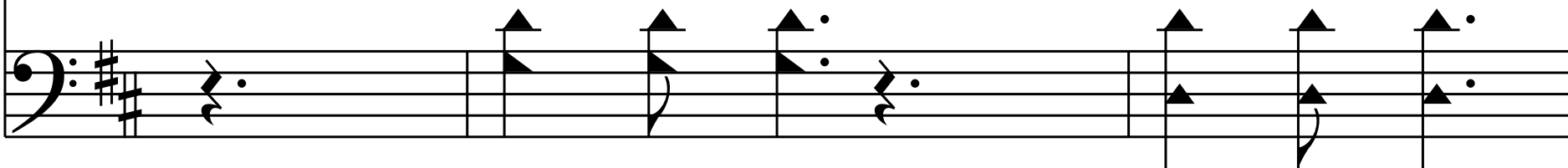
This block contains the second line of a musical score. It features a treble and bass staff in the key of D major (two sharps). The treble staff begins with a treble clef and a key signature of two sharps. The melody consists of eighth and quarter notes, with a final measure containing a half note and a quarter note tied to the next line. The bass staff begins with a bass clef and a key signature of two sharps. The accompaniment consists of quarter and half notes, with a final measure containing a half note and a quarter note tied to the next line. The lyrics "But to - day ac - cept His grace." are written below the staves.

*Chorus*

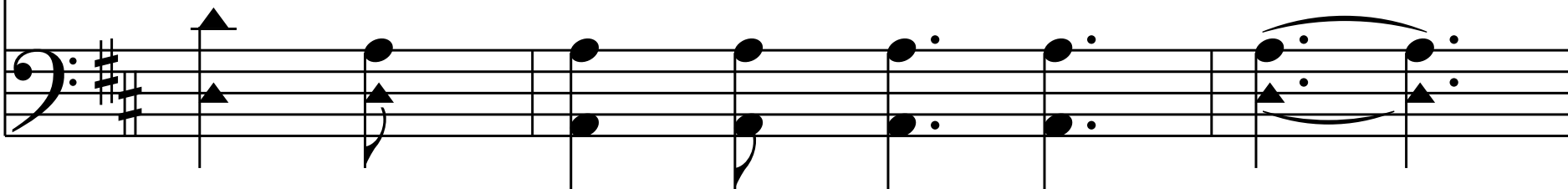


Why not now? \_\_\_\_\_ why not now? \_\_\_\_\_

Why not now? why not now?



Why not come to Je - sus now?





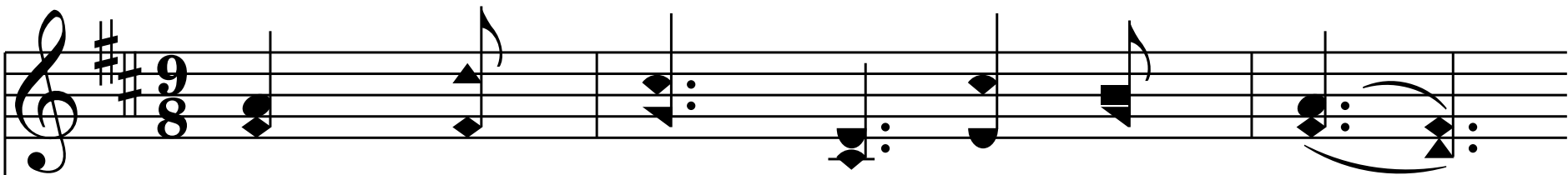
Why not now? \_\_\_\_\_ why not now? \_\_\_\_\_  
Why not now? why not now?

This musical system consists of two staves in G major (one sharp). The treble staff contains a melody with eighth and quarter notes, including two measures with ties. The bass staff provides a harmonic accompaniment with eighth and quarter notes, also featuring ties in the final two measures.

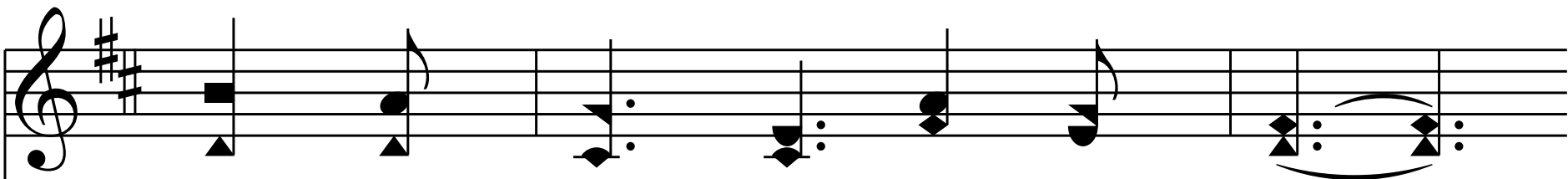
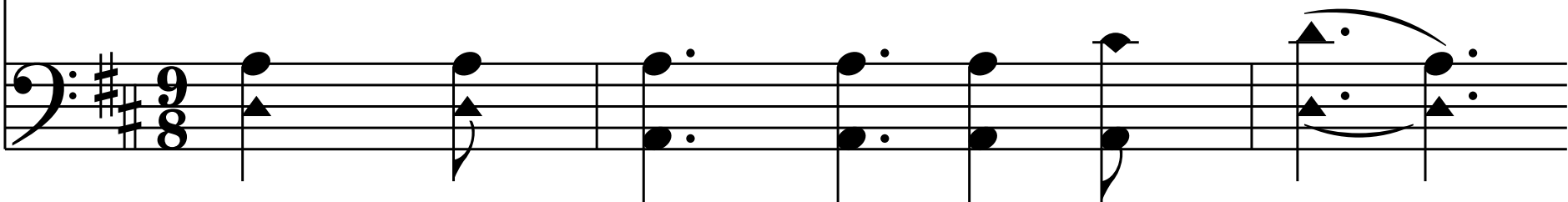
Why not come to Je - sus now?

This musical system continues the melody and accompaniment. The treble staff melody concludes with a half note and a quarter note. The bass staff accompaniment also concludes with a half note and a quarter note. The system ends with a double bar line.

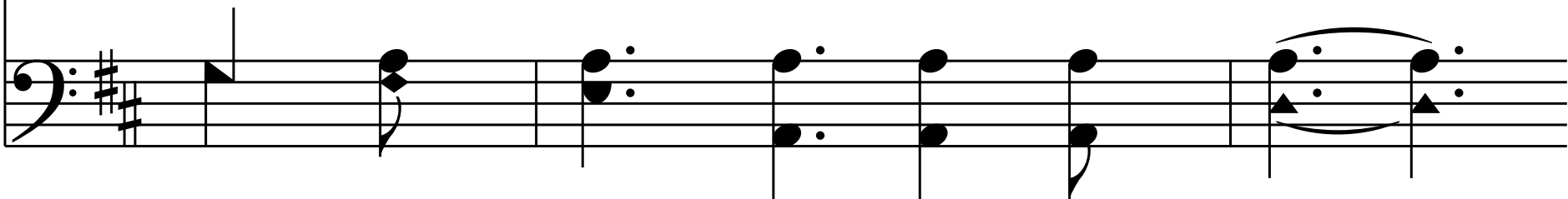
End of Verse 2

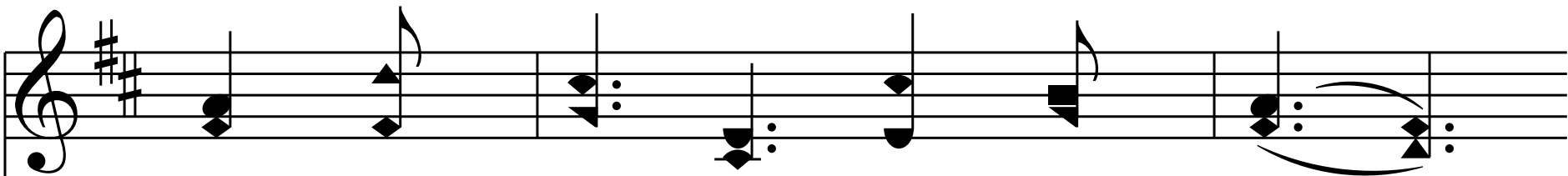


3. Come to Christ, con-fes-sion make;

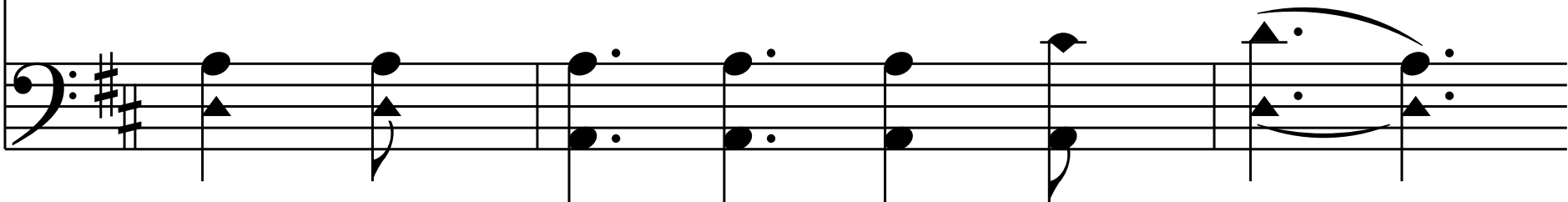


Come to Christ, and par-don take;





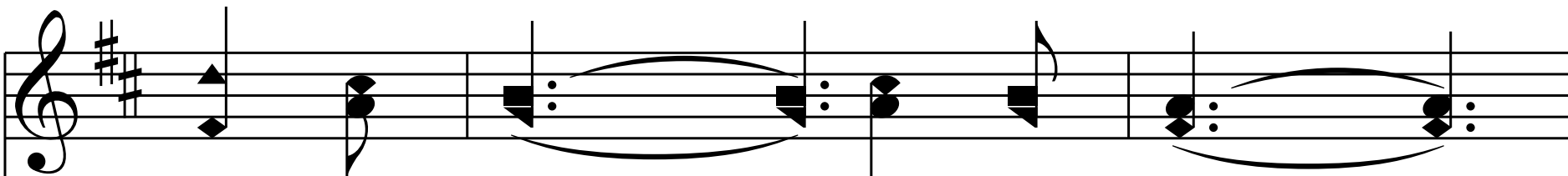
Trust in Him from day to day,



He will keep you all the way.

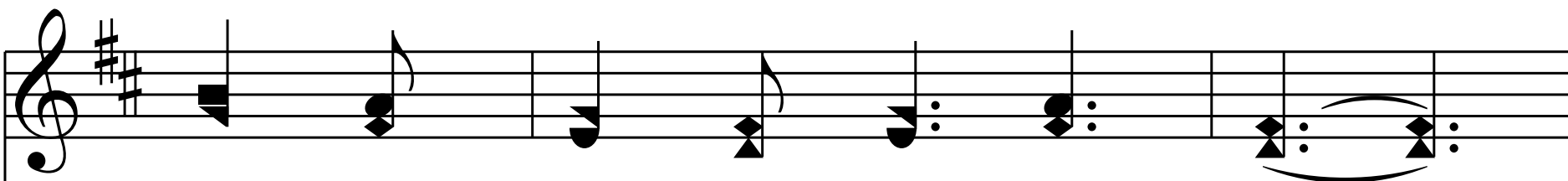
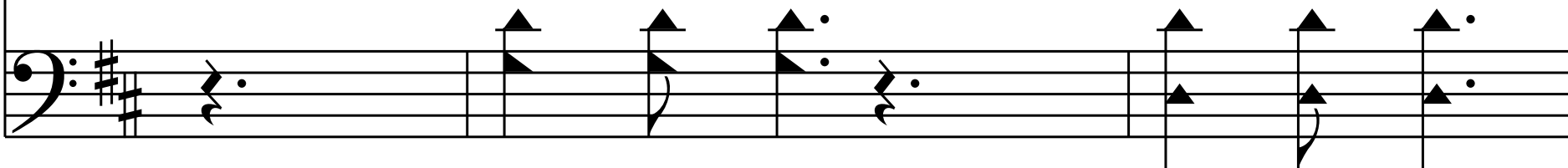


*Chorus*

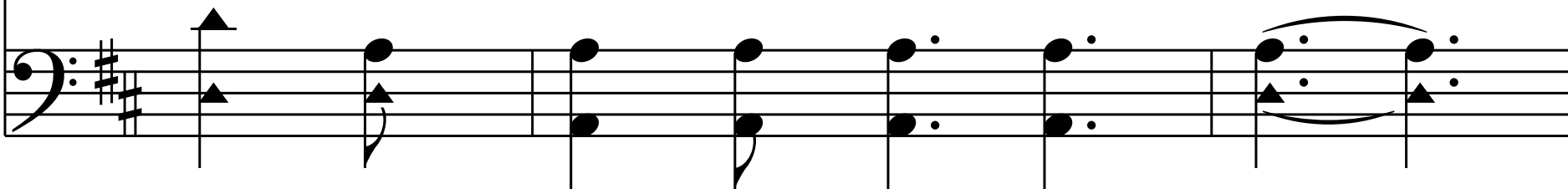


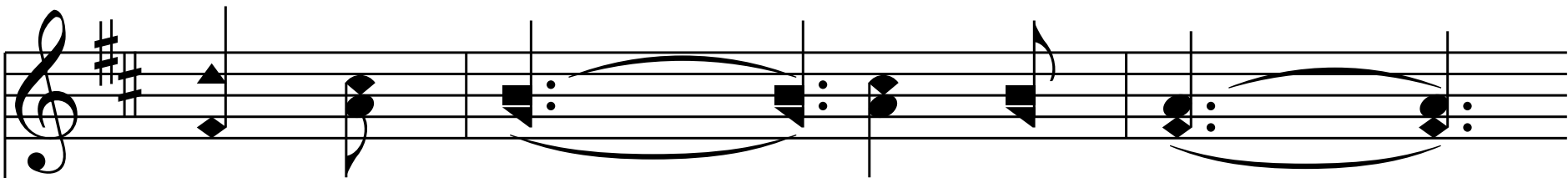
Why not now? \_\_\_\_\_ why not now? \_\_\_\_\_

Why not now? why not now?



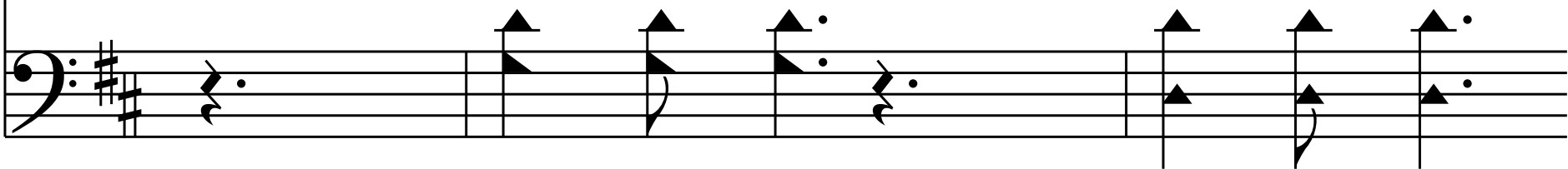
Why not come to Je - sus now?





Why not now? \_\_\_\_\_ why not now? \_\_\_\_\_

Why not now? why not now?



Why not come to Je - sus now?



End of Hymn