

When Jesus Comes Again

His lord said unto him, Well done, good and faithful servant: thou hast been faithful over a few things, I will set thee over many things; enter thou into the joy of thy lord. - Matt. 25:31

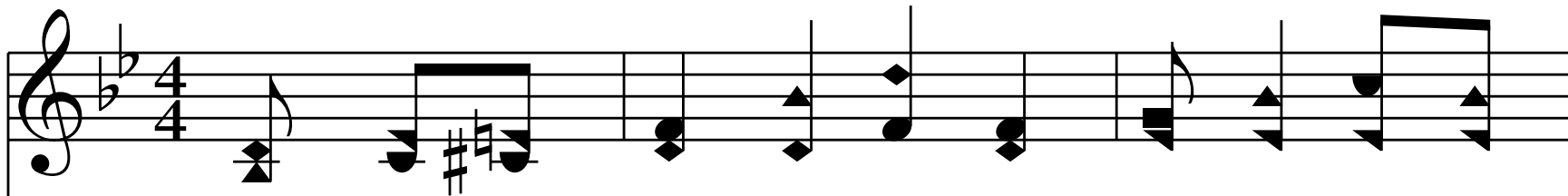
B♭ - 4 - MI

James W. Gaines

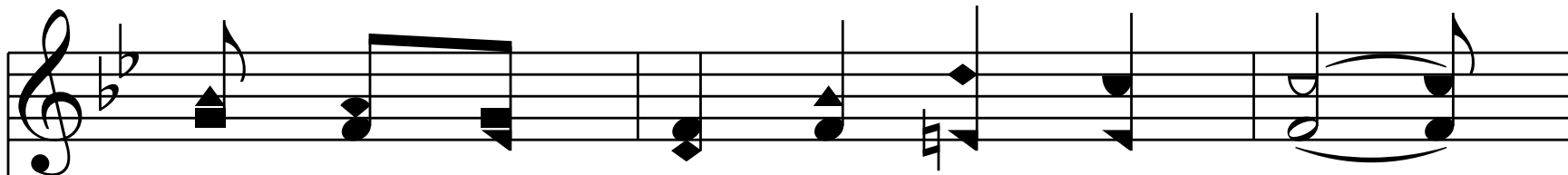
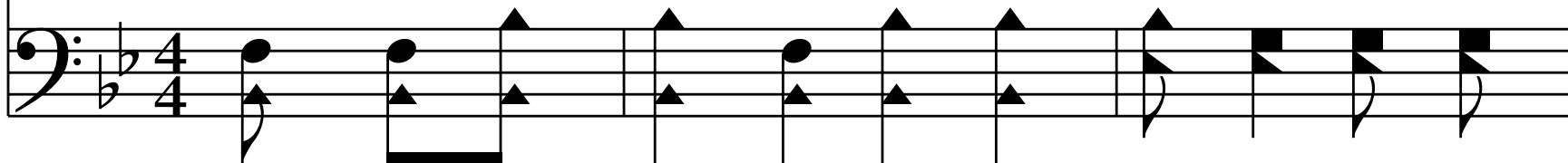
James W. Gaines, 1923

Public Domain

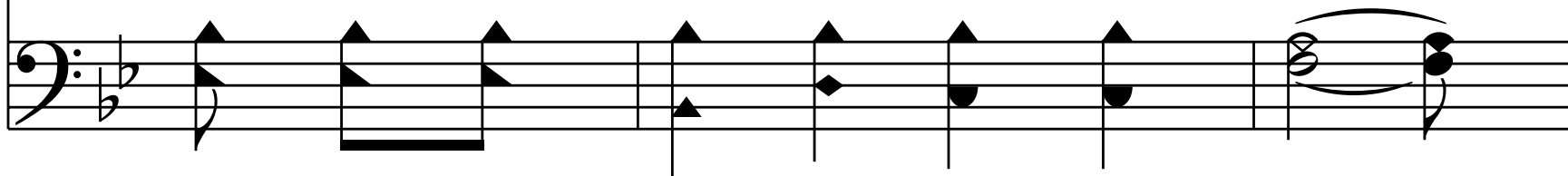
HymnsToGod.org



1. When Je - sus comes a - gain to gath - er His own,



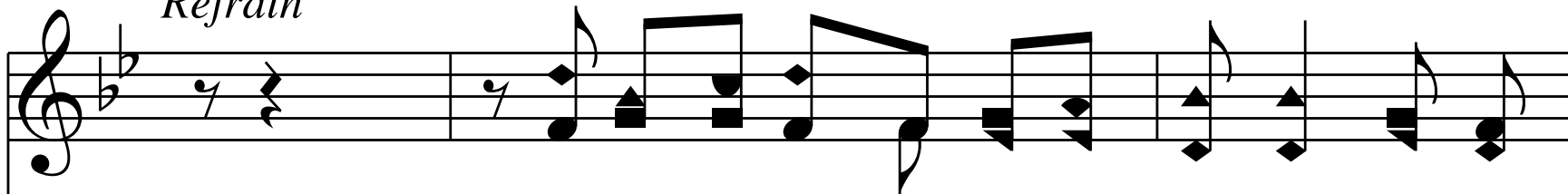
And to the true a crown is giv'n



I want to hear Him say, "My ser - vant, well done,

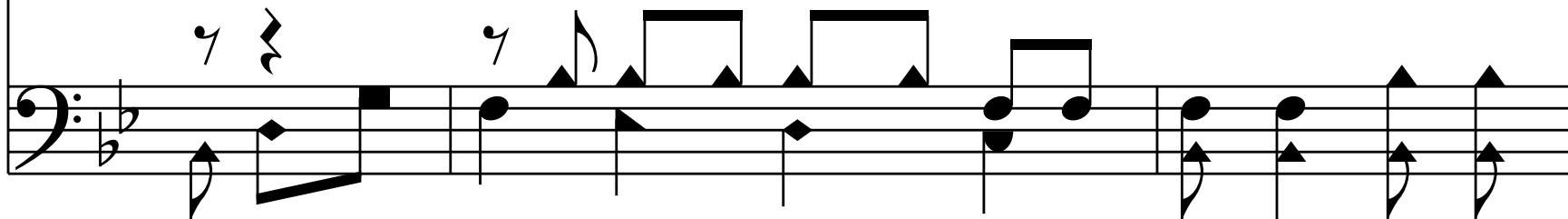
Thy soul shall know the joys of heav'n."

Refrain

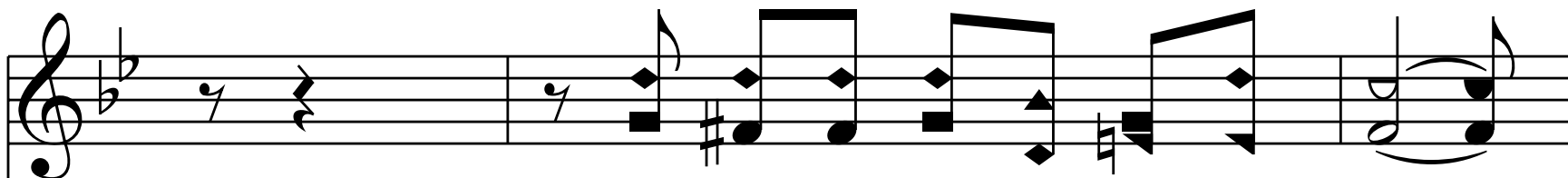


Musical notation for the first staff of the refrain, treble clef, 7/4 time signature. The staff contains a whole rest followed by a series of eighth and quarter notes.

I want to know that He will wel-come me there,
I want to know that He will wel-come me there,

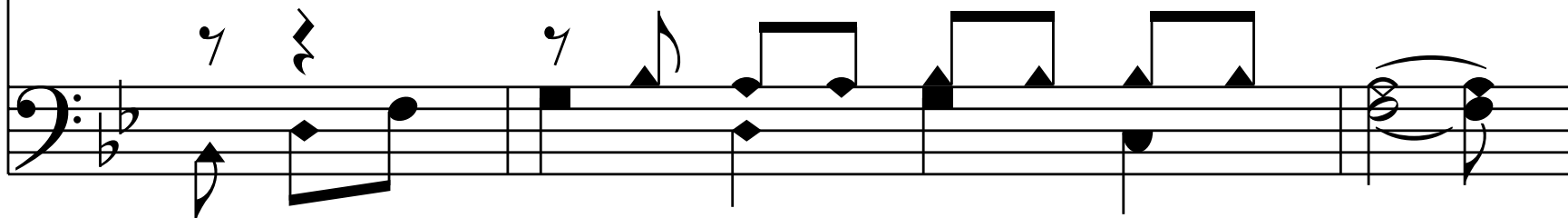


Musical notation for the second staff of the refrain, bass clef, 7/4 time signature. The staff contains a whole rest followed by a series of eighth and quarter notes.



Musical notation for the first staff of the second phrase, treble clef, 7/4 time signature. The staff contains a whole rest followed by a series of eighth and quarter notes, including a sharp sign.

I do not want to be de - nied
I do not want to be de - nied;



Musical notation for the second staff of the second phrase, bass clef, 7/4 time signature. The staff contains a whole rest followed by a series of eighth and quarter notes, including a sharp sign.

I want to meet Him in that cit - y so fair,
I want to meet Him in that cit - y so fair,

And ev - er there with Him a - bide.

End of Verse 1

2. I want to tell to all the sto - ry of love,

2. I want to tell to all the sto - ry of love,

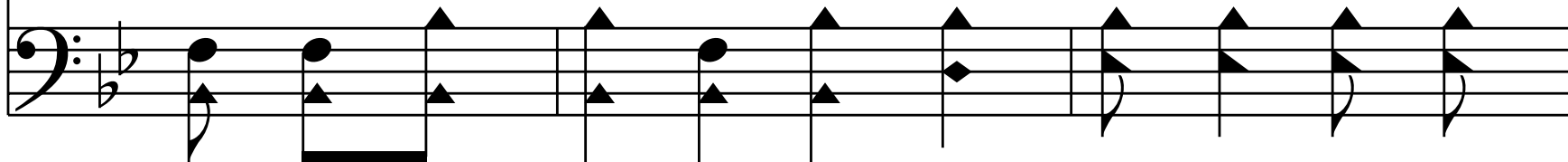
That they may know His par - don free,

That they may know His par - don free,

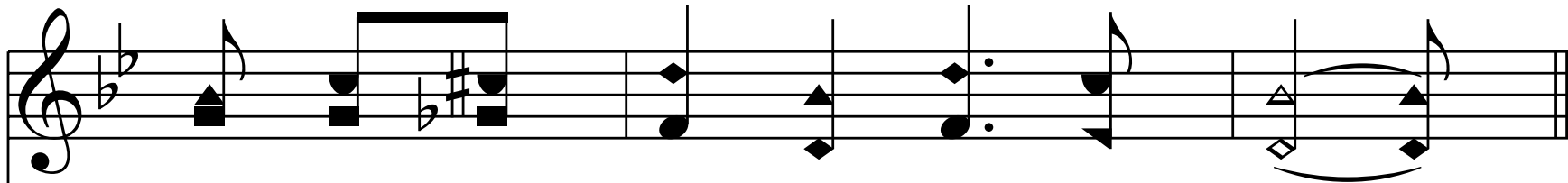


Musical notation for the first line of the song, featuring a treble clef and a bass clef staff. The treble staff contains a melody with notes and rests, while the bass staff provides a harmonic accompaniment. The key signature is one flat (B-flat), and the time signature is 4/4.

And there be - fore His throne in glo - ry a - bove,

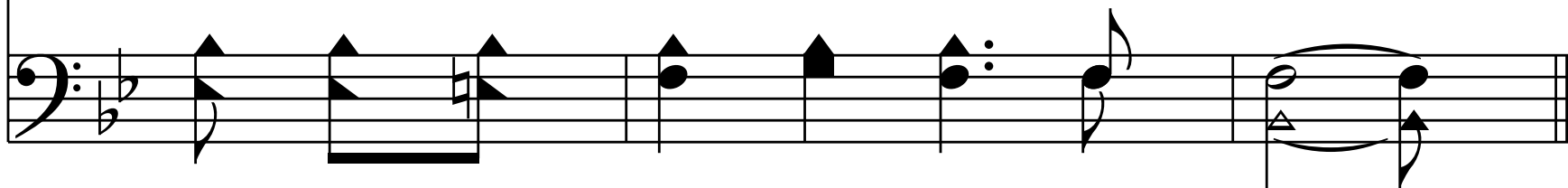


Musical notation for the second line of the song, featuring a bass clef staff. The bass staff continues the accompaniment from the first line, with notes and rests.



Musical notation for the third line of the song, featuring a treble clef staff. The treble staff continues the melody from the first line, ending with a double bar line.

Re - ceive a crown of vic - to - ry.



Musical notation for the fourth line of the song, featuring a bass clef staff. The bass staff continues the accompaniment from the second line, ending with a double bar line.

Refrain

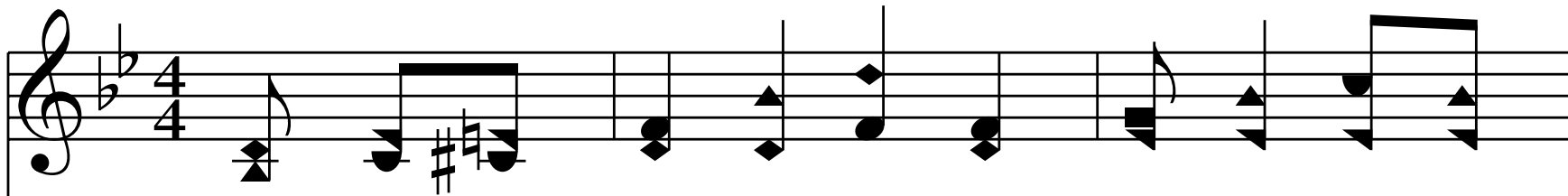
I want to know that He will wel-come me there,
I want to know that He will wel-come me there,

I do not want to be de - nied
I do not want to be de - nied;

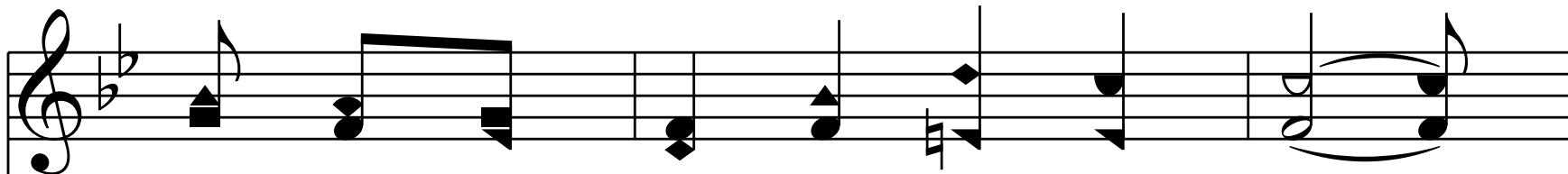
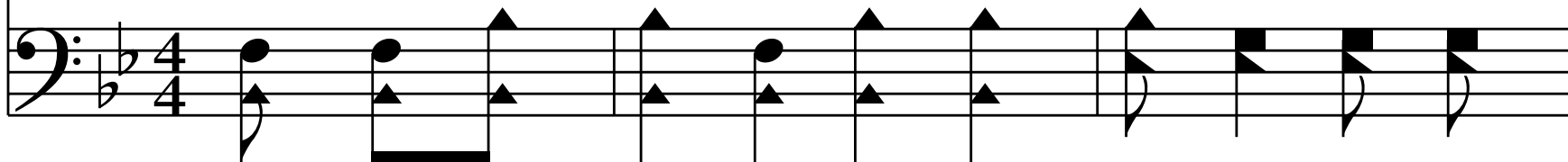
I want to meet Him in that cit - y so fair,
I want to meet Him in that cit - y so fair,

And ev - er there with Him a - bide.

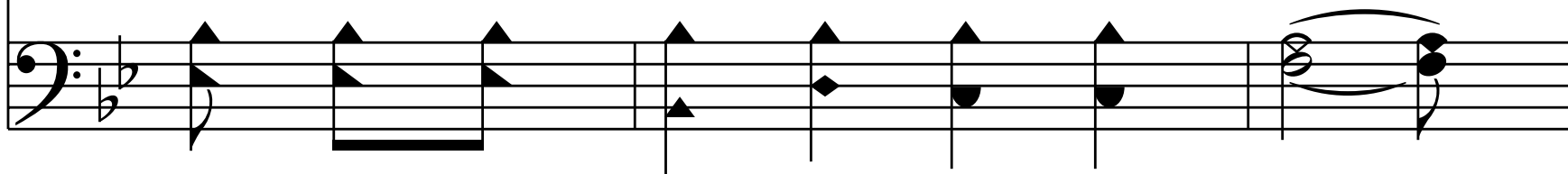
End of Verse 2



3. He's com - ing back a - gain, His jew - els to claim,



They shall re - ceive e - ter - nal rest;



I want to know that all who come in His name

Shall there be num - bered with the blest.

Refrain

I want to know that He will wel-come me there,
I want to know that He will wel-come me there,

I do not want to be de - nied
I do not want to be de - nied;

I want to meet Him in that cit - y so fair,
I want to meet Him in that cit - y so fair,

And ev - er there with Him a - bide.

End of Verse 3

4. I do not know the day my Sav - ior will come,

But I must be pre - pared to go;

If I am read - y, He will call me His own,

And that's e - nough for me to know.

Refrain

I want to know that He will wel-come me there,
I want to know that He will wel-come me there,

I do not want to be de - nied
I do not want to be de - nied;

I want to meet Him in that cit - y so fair,
I want to meet Him in that cit - y so fair,

The first system of the hymn features two staves. The upper staff is in treble clef with a key signature of one flat (B-flat) and a 7/4 time signature. It contains a melodic line with eighth and quarter notes, including a triplet of eighth notes. The lower staff is in bass clef with the same key signature and time signature, providing a harmonic accompaniment with quarter and eighth notes. The lyrics are centered between the two staves.

And ev - er there with Him a - bide.

The second system of the hymn also consists of two staves. The upper staff continues the melody from the first system, ending with a long note and a fermata. The lower staff provides the accompaniment, also ending with a long note and a fermata. The lyrics are centered between the staves.

End of Hymn