

'Tis Midnight; And On Olive's Brow

*And He came out...to the mount of Olives...and being in agony
He prayed more earnestly... - Lk. 22:39-46*

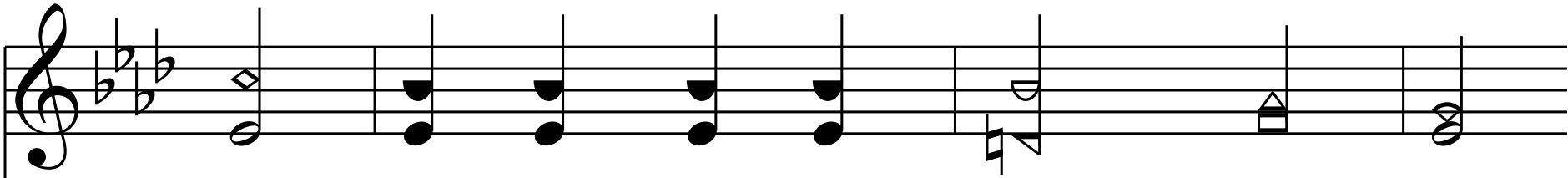
A^b - 4 - SOL

William B. Tappan, 1822

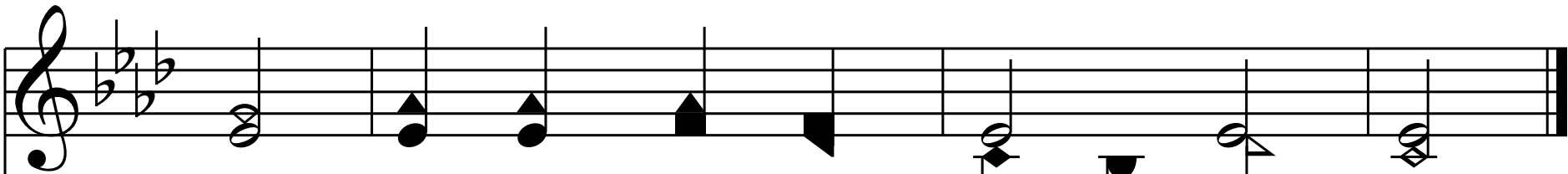
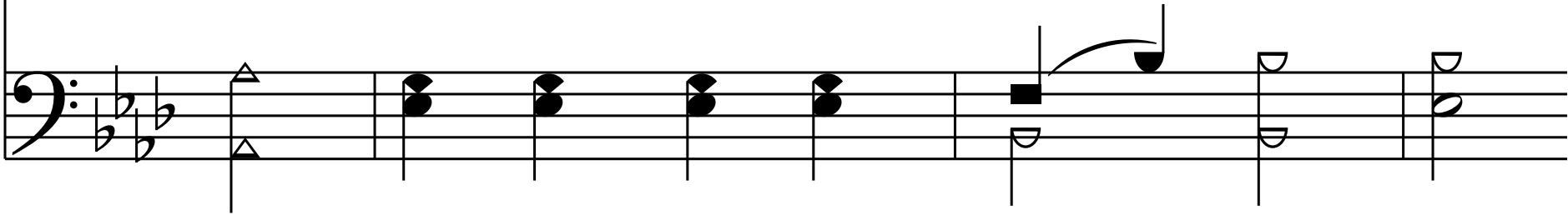
William B. Bradbury, 1853

Public Domain

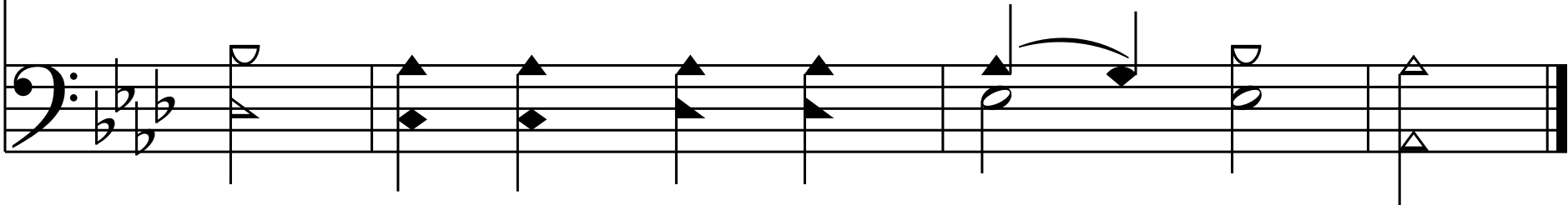
HymnsToGod.org



'Tis mid-night; in the gar - den, now



The suf-f'ring Sav - ior prays a - lone.



End of Verse 1

2. 'Tis mid-night; and for oth - er's' guilt

The Man of Sor-rows weeps in blood;

Yet He that hath in an - guish knelt

Yet He that hath in an - guish knelt

Is not for - sak - en by His God.

Is not for - sak - en by His God.

End of Verse 2

End of Verse 2

End of Verse 2

Musical notation for the first system, treble clef, 4/4 time signature. The melody consists of the following notes: G4 (quarter), A4 (quarter), B4 (quarter), C5 (quarter), B4 (quarter), A4 (quarter), G4 (quarter), F4 (quarter), E4 (quarter), D4 (quarter).

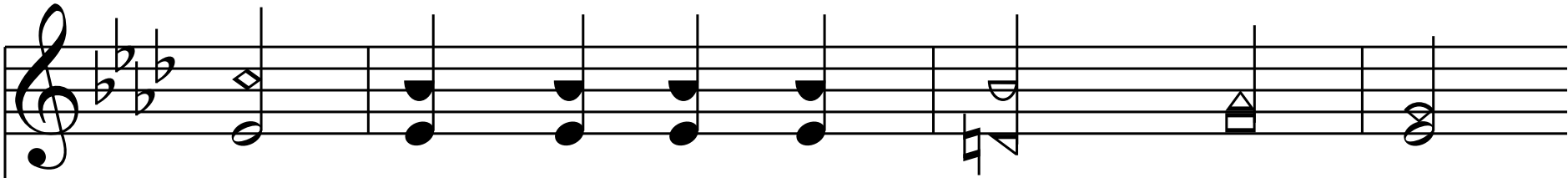
3. 'Tis mid-night; and from heav'n-ly plains

Musical notation for the first system, bass clef accompaniment. The bass line consists of the following notes: G3 (quarter), A3 (quarter), B3 (quarter), C4 (quarter), B3 (quarter), A3 (quarter), G3 (quarter), F3 (quarter), E3 (quarter), D3 (quarter).

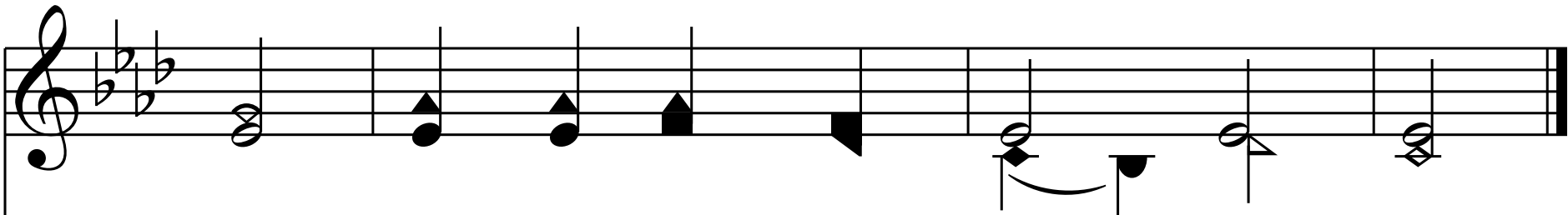
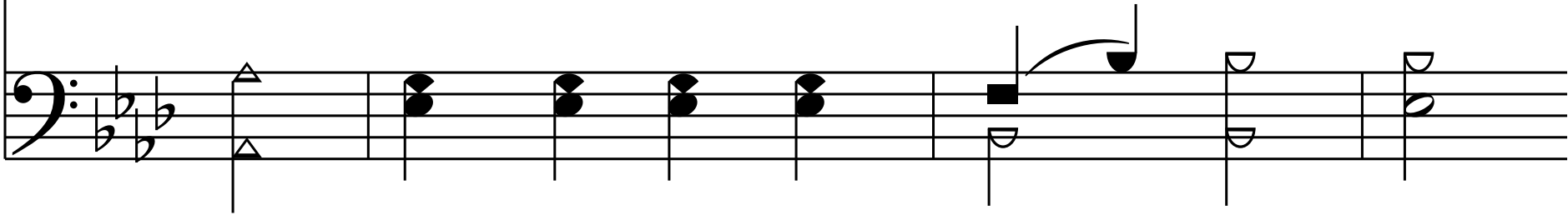
Musical notation for the second system, treble clef. The melody consists of the following notes: G4 (quarter), A4 (quarter), B4 (quarter), C5 (quarter), B4 (quarter), A4 (quarter), G4 (quarter), F4 (quarter), E4 (quarter), D4 (quarter).

Is borne the song that an - gels know;

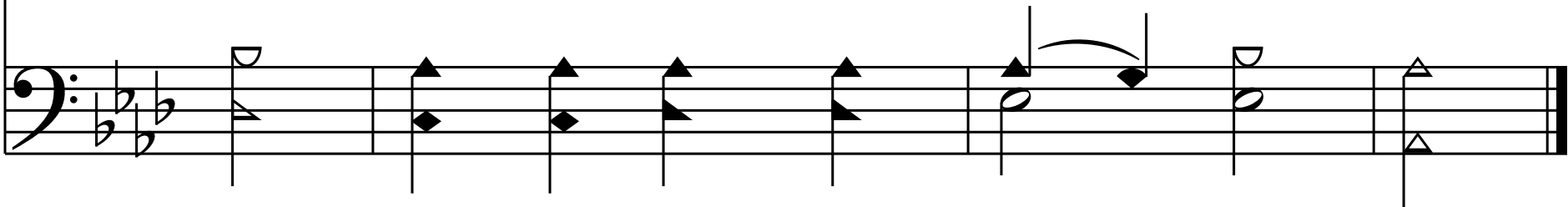
Musical notation for the second system, bass clef accompaniment. The bass line consists of the following notes: G3 (quarter), A3 (quarter), B3 (quarter), C4 (quarter), B3 (quarter), A3 (quarter), G3 (quarter), F3 (quarter), E3 (quarter), D3 (quarter).



Un - heard by mor-tals are the strains



That sweet-ly soothe the Sav - ior's woe.



End of Hymn