

Softly And Tenderly

I come not to call the righteous, but sinners to repentance - Lk. 5:32

A \flat - 2 - MI

Will L. Thompson, arr.

Will L. Thompson, 1880

Public Domain

HymnsToGod.org

Musical notation for the first staff, treble clef, 6/8 time signature, key of B-flat major. The melody consists of six eighth notes: B-flat, A-flat, G, F, E, D.

1. Soft - ly and ten - der - ly

Musical notation for the second staff, bass clef, 6/8 time signature, key of B-flat major. The accompaniment consists of six eighth notes: B-flat, A-flat, G, F, E, D.

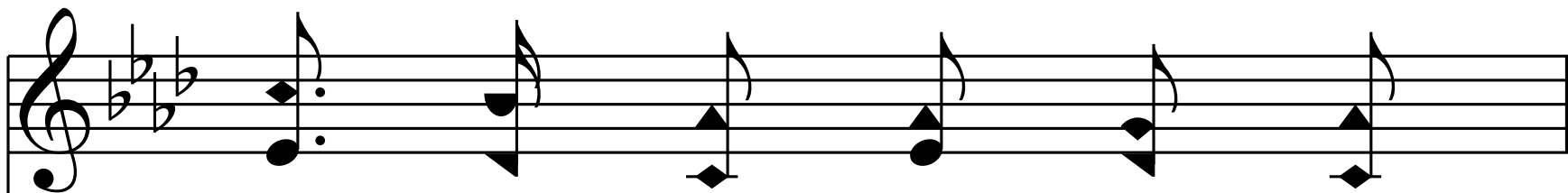
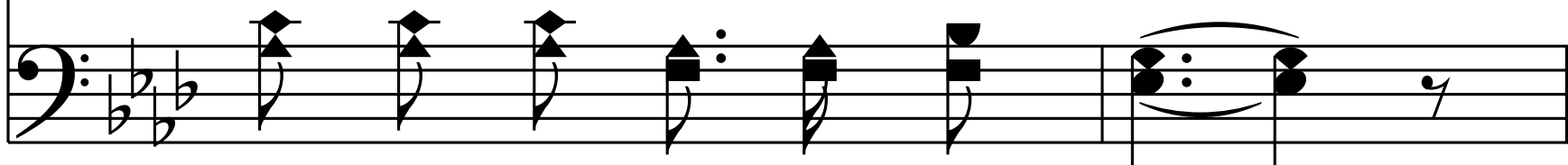
Musical notation for the third staff, treble clef, 6/8 time signature, key of B-flat major. The melody consists of six eighth notes: B-flat, A-flat, G, F, E, D, followed by a fermata.

Je - sus is call - ing,

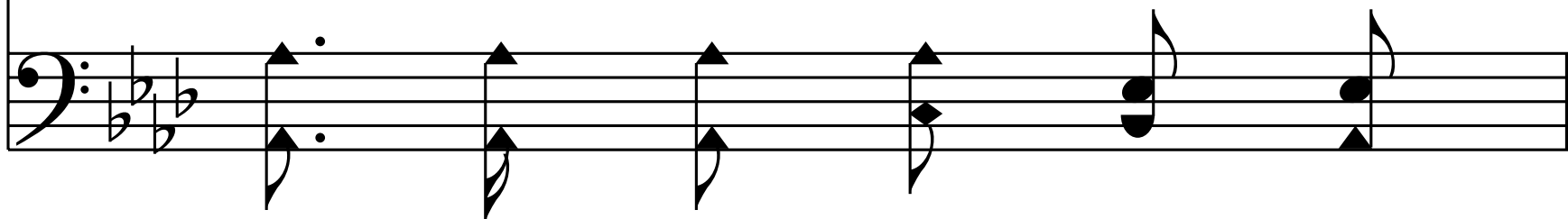
Musical notation for the fourth staff, bass clef, 6/8 time signature, key of B-flat major. The accompaniment consists of six eighth notes: B-flat, A-flat, G, F, E, D, followed by a fermata.



Call-ing for you and for me;

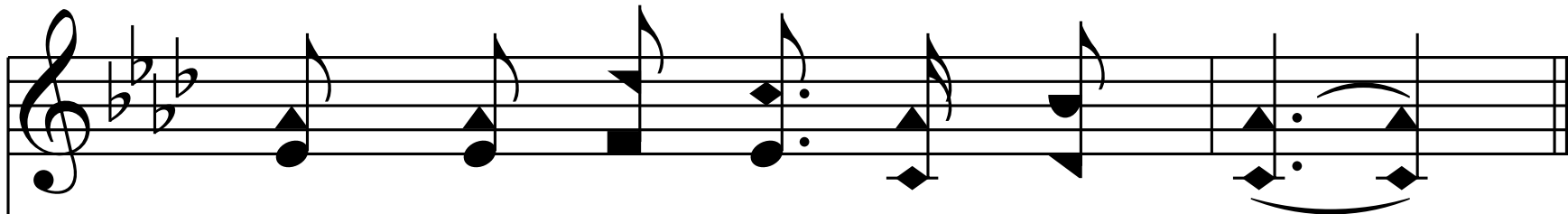
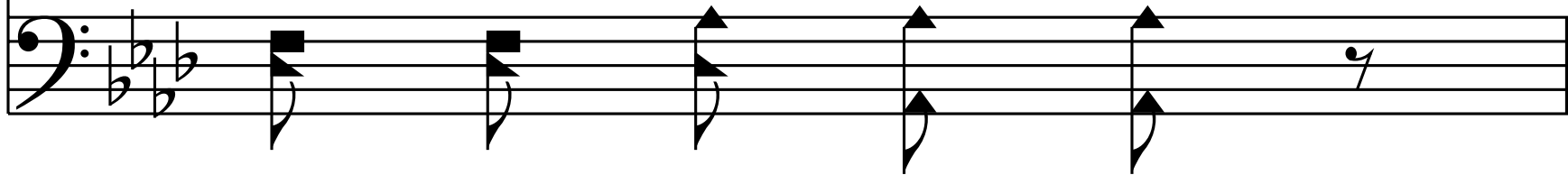


See, on the por - tals He's





wait - ing and watch - ing,



Watch-ing for you and for me.



Refrain

The first staff of music is written on a treble clef with a key signature of three flats (B-flat, E-flat, A-flat) and a common time signature. It contains six measures of music. The first measure has a quarter note G4. The second measure has a dotted half note G4. The third measure has a quarter note G4. The fourth measure has a quarter note G4. The fifth measure has a quarter note G4. The sixth measure has a quarter note G4. There are various accidentals and ornaments throughout the staff.

Come home, _____ come home, _____

Come home, _____ come home, _____

The second staff of music is written on a bass clef with a key signature of three flats (B-flat, E-flat, A-flat) and a common time signature. It contains six measures of music. The first measure has a quarter note G2. The second measure has a quarter note G2. The third measure has a quarter note G2. The fourth measure has a quarter note G2. The fifth measure has a quarter note G2. The sixth measure has a quarter note G2. There are various accidentals and ornaments throughout the staff.

Musical notation for the first system, featuring a treble clef, a key signature of three flats, and a dynamic marking of crescendo. The melody consists of eighth and quarter notes, with a repeat sign and a fermata over the final notes.

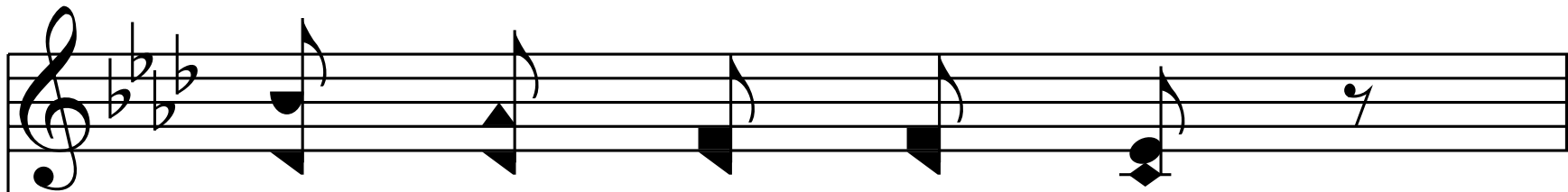
Ye who are wea-ry, come home! —

Musical notation for the second system, featuring a bass clef and a dynamic marking of piano (*p*). The accompaniment consists of quarter and eighth notes, with a fermata over the final notes.

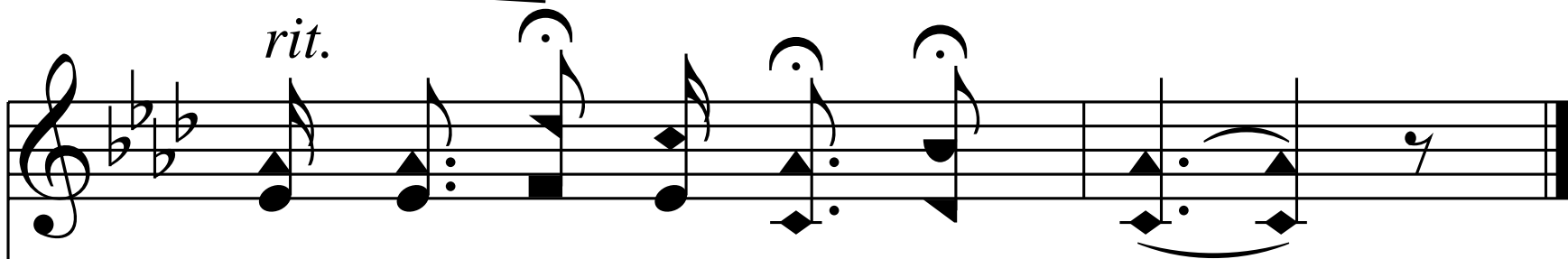
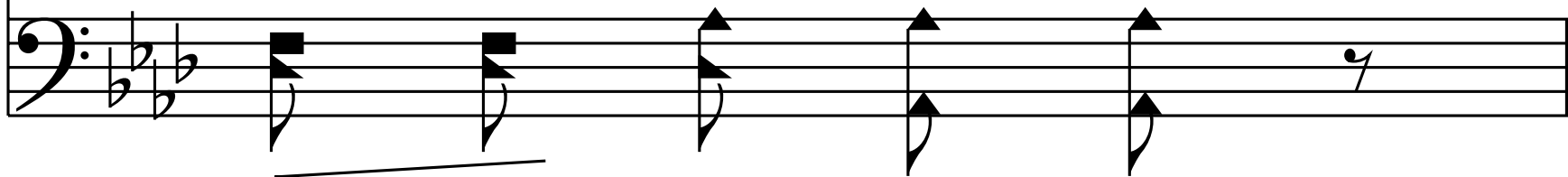
Musical notation for the third system, featuring a treble clef and a key signature of three flats. The melody consists of quarter notes.

Ear - nest - ly, tend - er - ly,

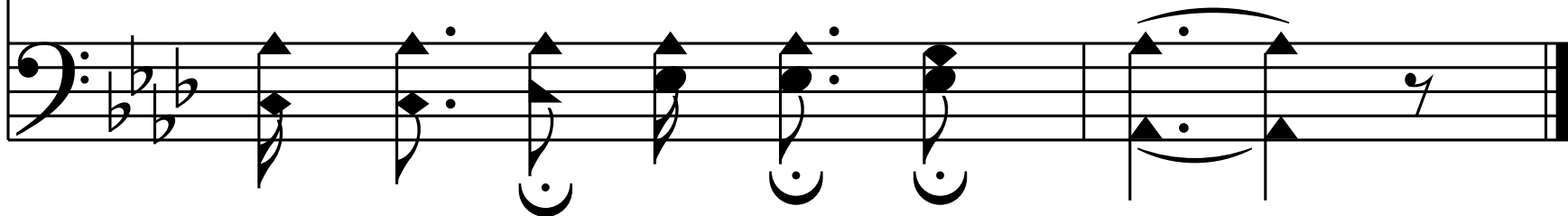
Musical notation for the fourth system, featuring a bass clef and a key signature of three flats. The accompaniment consists of quarter notes.



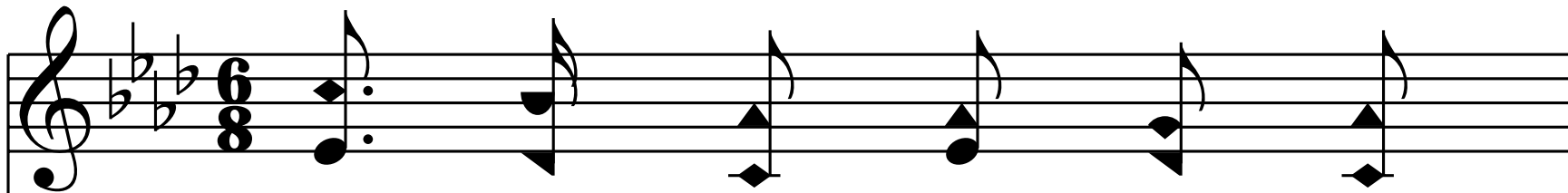
Je - sus is call - ing,



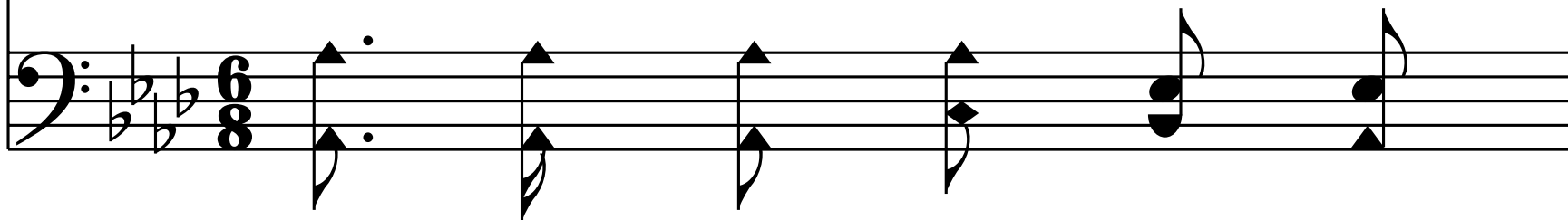
Call-ing, O sin-ner, Come home!



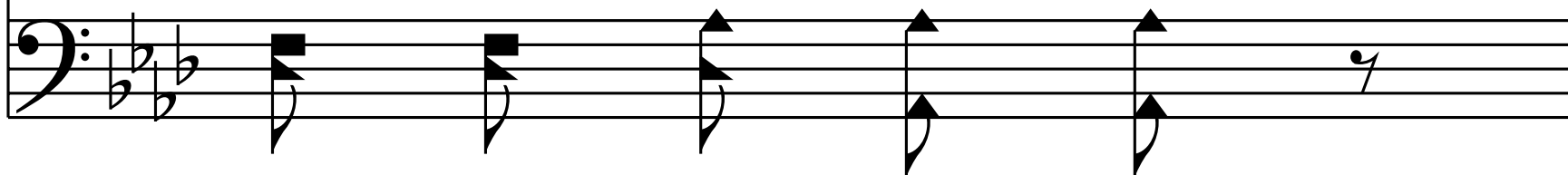
End of Verse 1



2. Why should we tar - ry when

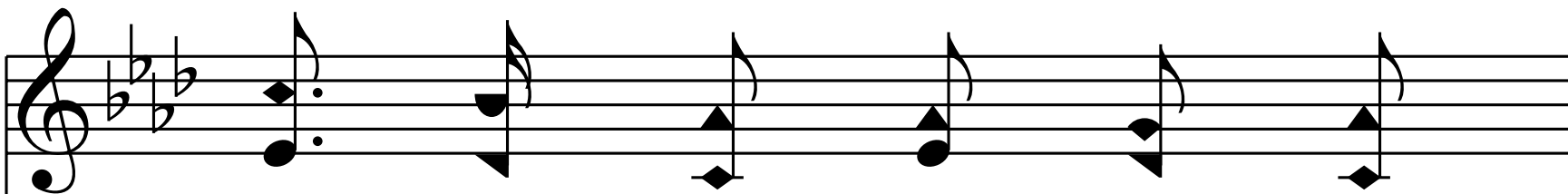
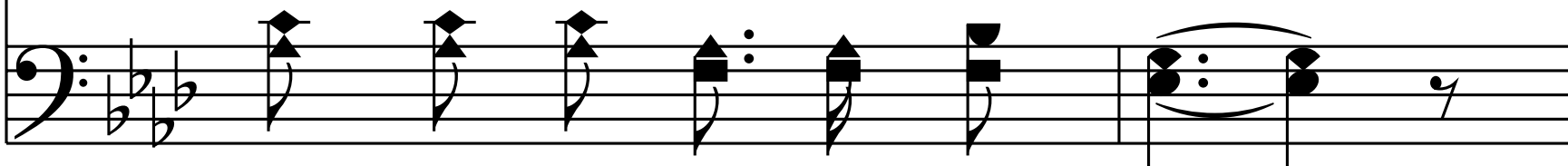


Je - sus is plead - ing,

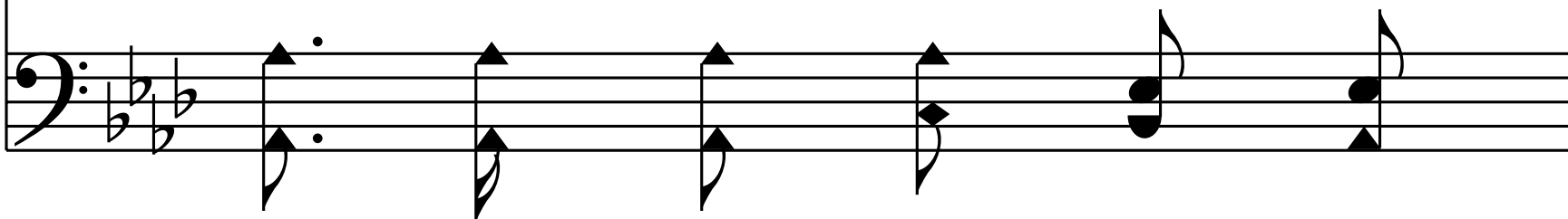




Plead-ing for you and for me;

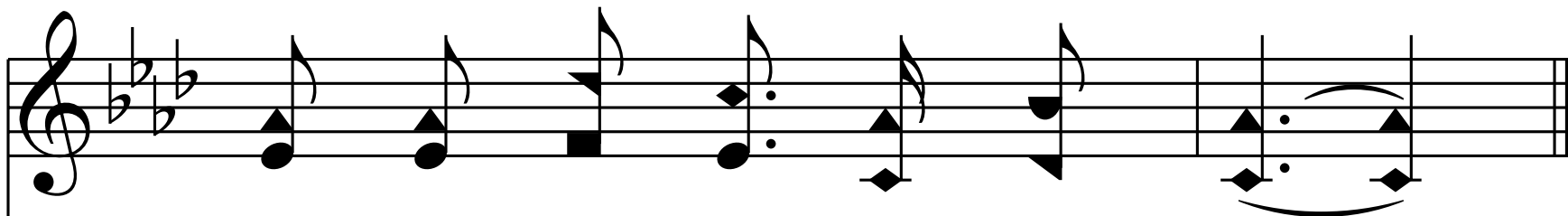
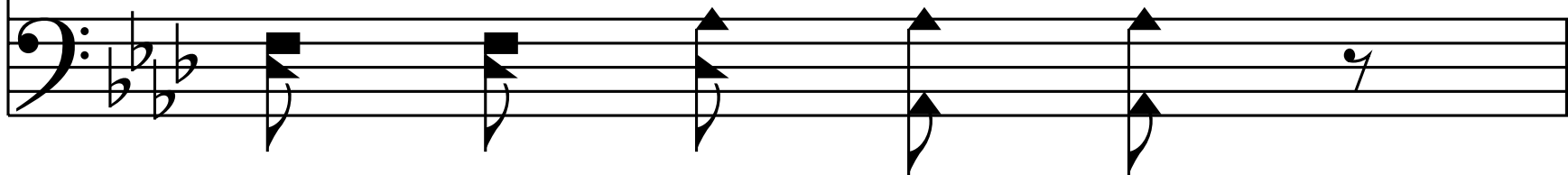


Why should we lin - ger and

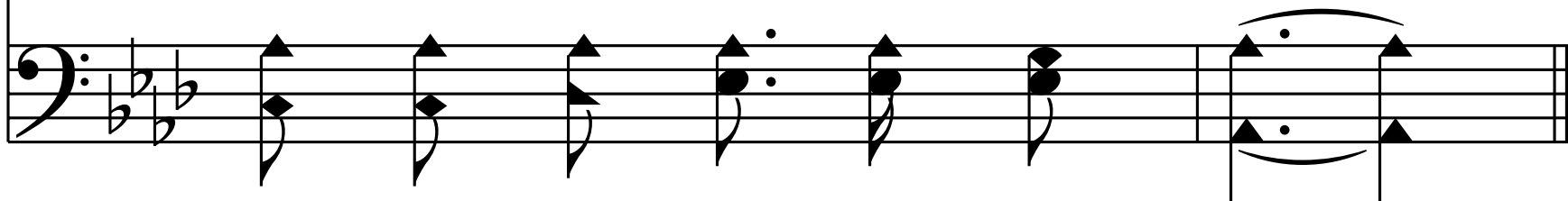




heed not His mer - cies,



Mer - cies for you and for me?



Refrain

The first staff of music is written on a treble clef with a key signature of three flats (B-flat, E-flat, A-flat) and a common time signature. It contains six measures of music. The first measure has a quarter note G4. The second measure has a dotted half note G4. The third measure has a quarter note G4. The fourth measure has a quarter note G4. The fifth measure has a quarter note G4. The sixth measure has a quarter note G4. There are various accidentals and ornaments throughout the staff.

Come home, _____ come home, _____

Come home, _____ come home, _____

The second staff of music is written on a bass clef with a key signature of three flats (B-flat, E-flat, A-flat) and a common time signature. It contains six measures of music. The first measure has a quarter note G2. The second measure has a quarter note G2. The third measure has a quarter note G2. The fourth measure has a quarter note G2. The fifth measure has a quarter note G2. The sixth measure has a quarter note G2. There are various accidentals and ornaments throughout the staff.

Musical notation for the first system, featuring a treble clef, a key signature of three flats, and a dynamic marking of crescendo. The melody consists of eighth and quarter notes, with a repeat sign and a fermata over the final notes.

Ye who are wea-ry, come home! —

Musical notation for the second system, featuring a bass clef and a dynamic marking of piano (*p*). The accompaniment consists of quarter and eighth notes, with a fermata over the final notes.

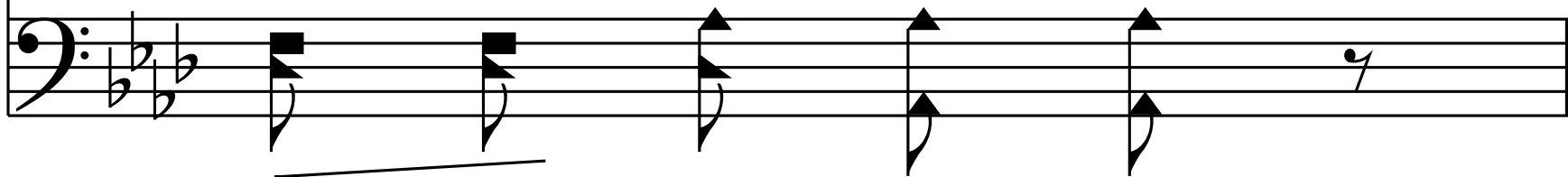
Musical notation for the third system, featuring a treble clef and a key signature of three flats. The melody consists of quarter notes.

Ear - nest - ly, tend - er - ly,

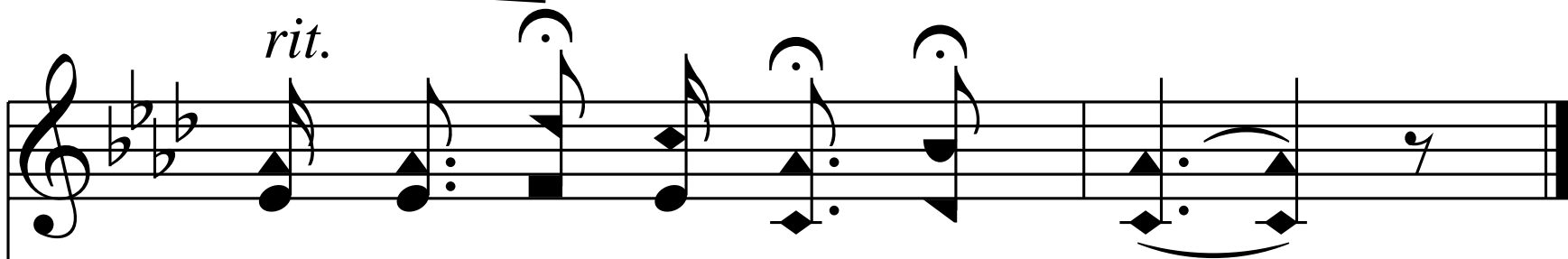
Musical notation for the fourth system, featuring a bass clef and a key signature of three flats. The accompaniment consists of quarter notes.



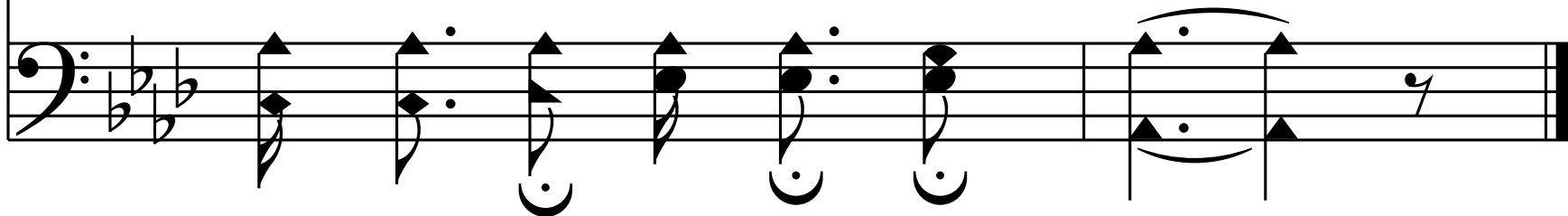
Je - sus is call - ing,



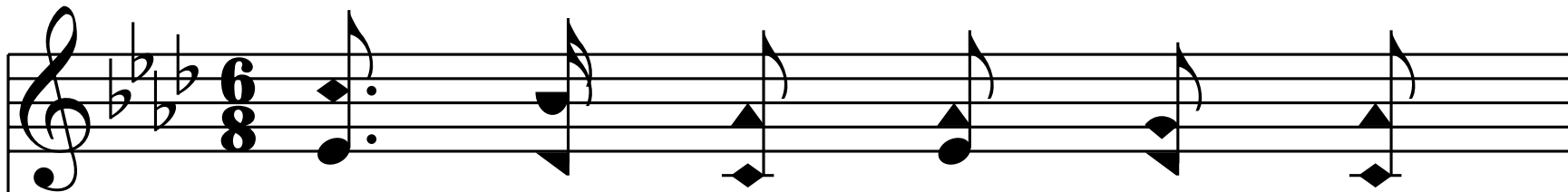
rit.



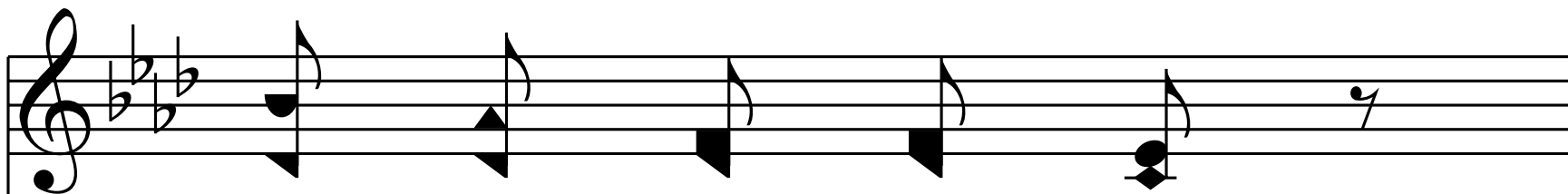
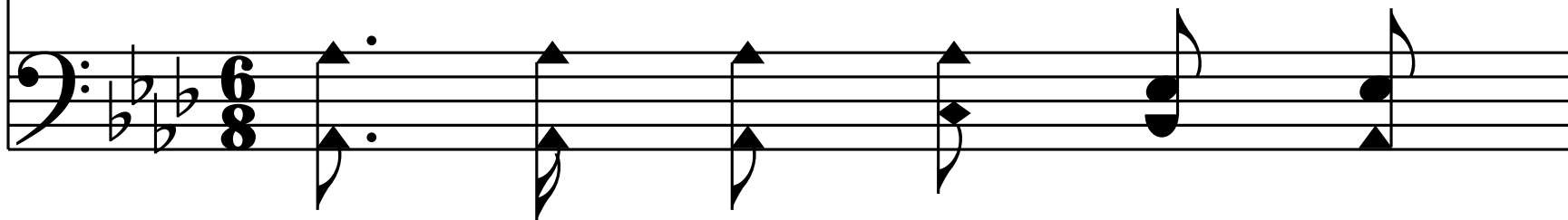
Call-ing, O sin-ner, Come home!



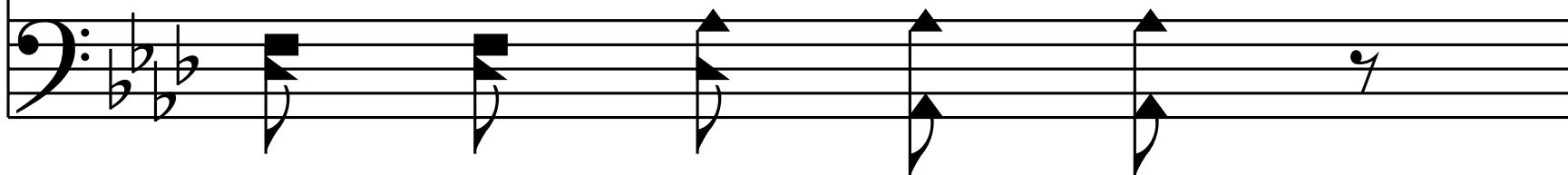
End of Verse 2



3. Time is now fleet - ing, the

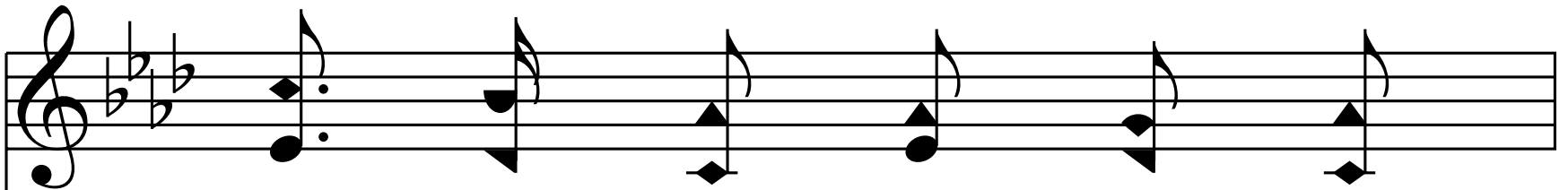
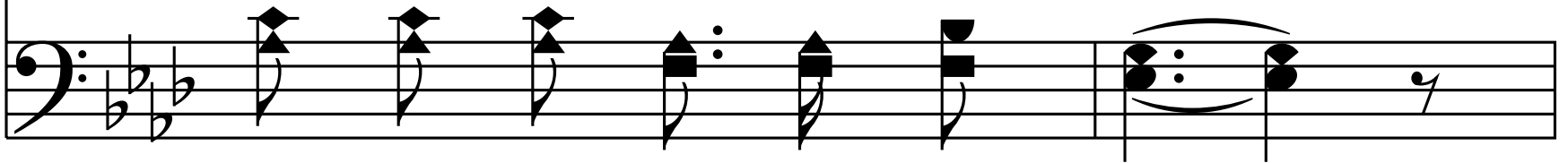


mo - ments are pass - ing,

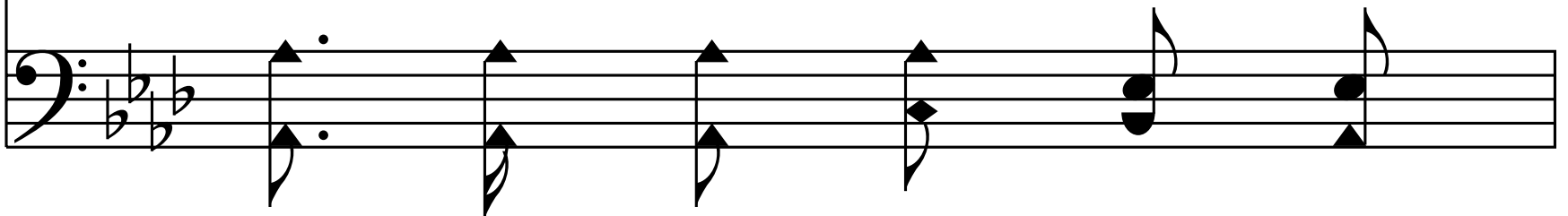


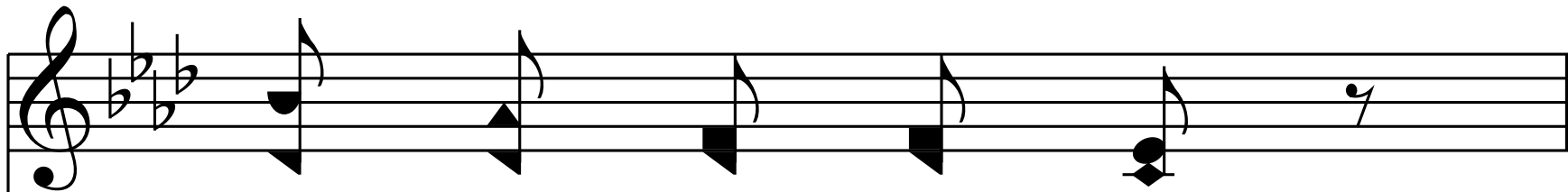


Pass-ing for you and for me;

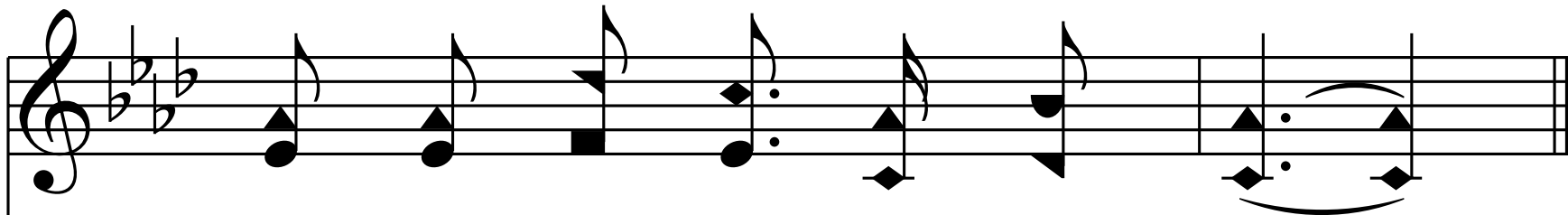
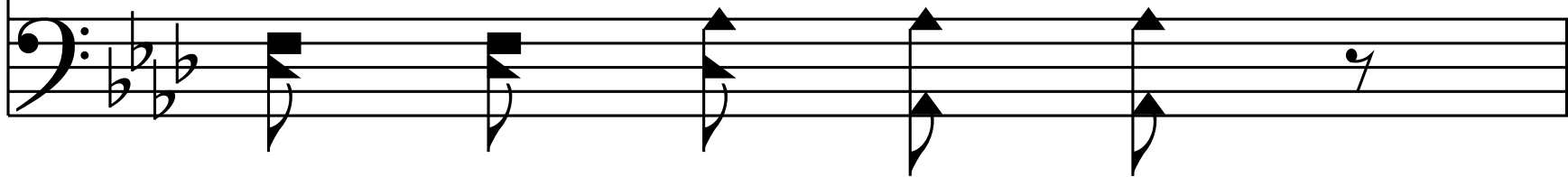


Shad - ows are gath - er - ing,





life's end is com - ing



Com-ing for you and for me.



Refrain

The first staff of music is written on a treble clef with a key signature of three flats (B-flat, E-flat, A-flat). It contains six measures of music. The first measure has a quarter note G4. The second measure has a dotted half note G4. The third measure has a quarter note G4. The fourth measure has a quarter note G4. The fifth measure has a quarter note G4. The sixth measure has a quarter note G4. There are various accidentals and ornaments throughout the staff.

Come home, _____ come home, _____

Come home, _____ come home, _____

The second staff of music is written on a bass clef with a key signature of three flats (B-flat, E-flat, A-flat). It contains six measures of music. The first measure has a quarter note G2. The second measure has a quarter note G2. The third measure has a quarter note G2. The fourth measure has a quarter note G2. The fifth measure has a quarter note G2. The sixth measure has a quarter note G2. There are various accidentals and ornaments throughout the staff.

Musical notation for the first system, featuring a treble clef, a key signature of three flats, and a dynamic marking of crescendo. The melody consists of eighth and quarter notes, with a repeat sign and a fermata over the final notes.

Ye who are wea-ry, come home! —

Musical notation for the second system, featuring a bass clef and a dynamic marking of piano (*p*). The accompaniment consists of quarter and eighth notes, with a fermata over the final notes.

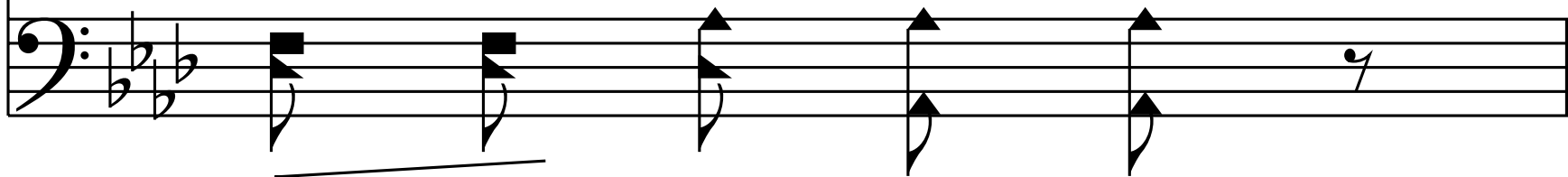
Musical notation for the third system, featuring a treble clef and a key signature of three flats. The melody consists of quarter notes.

Ear - nest - ly, tend - er - ly,

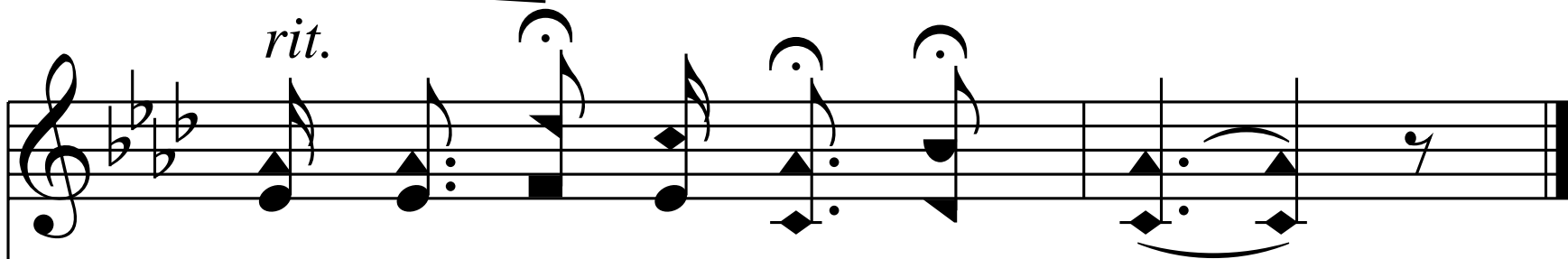
Musical notation for the fourth system, featuring a bass clef and a key signature of three flats. The accompaniment consists of quarter notes.



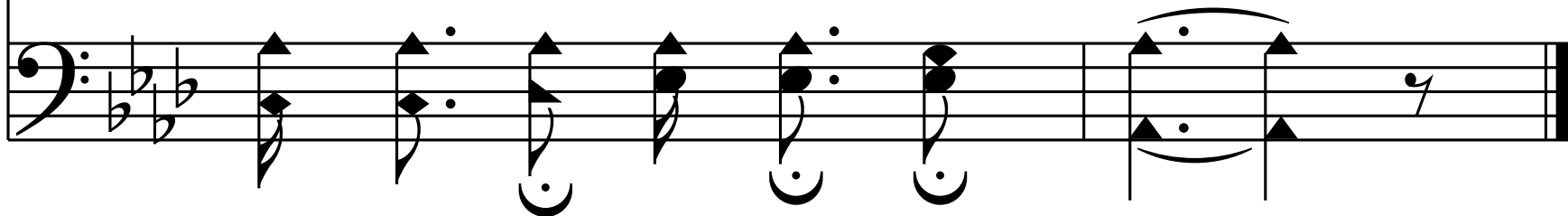
Je - sus is call - ing,



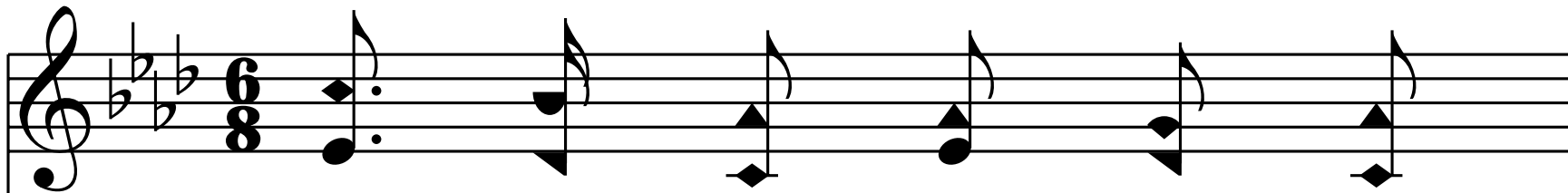
rit.



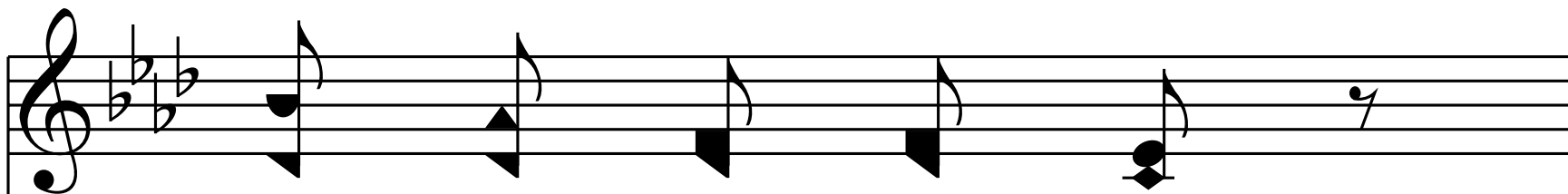
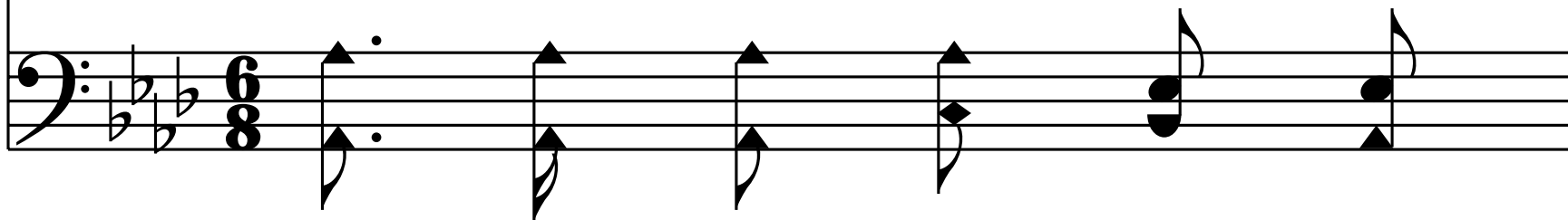
Call-ing, O sin-ner, Come home!



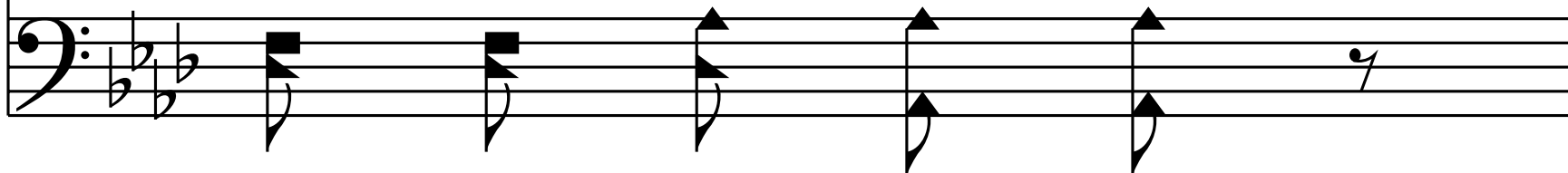
End of Verse 3

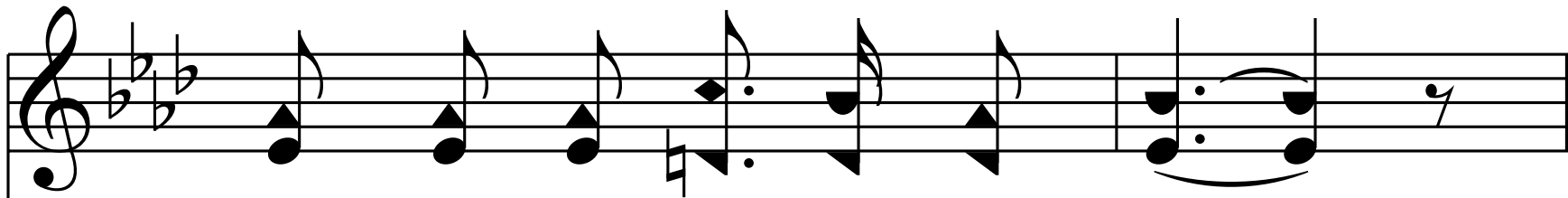


4. Oh! for the won - der - ful

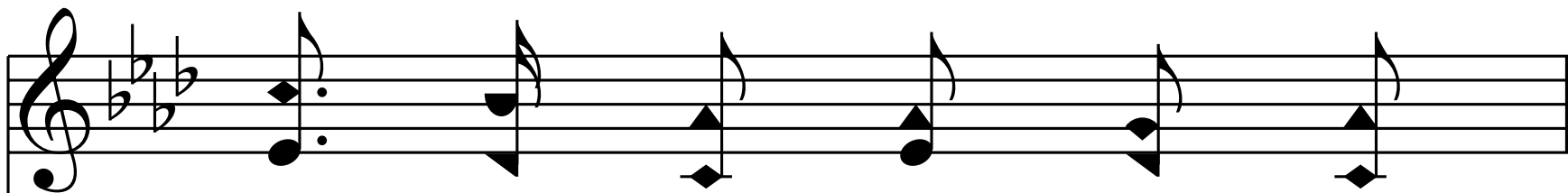
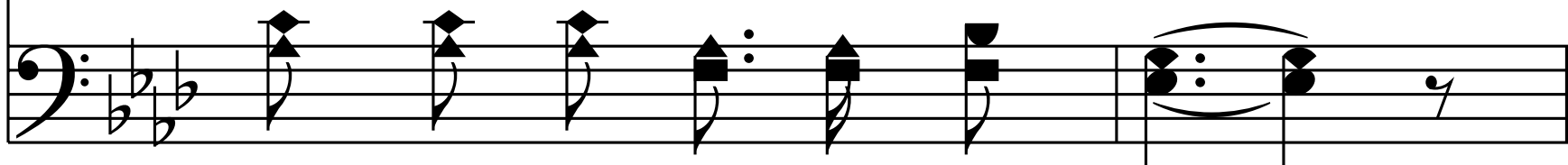


love He has prom - ised,

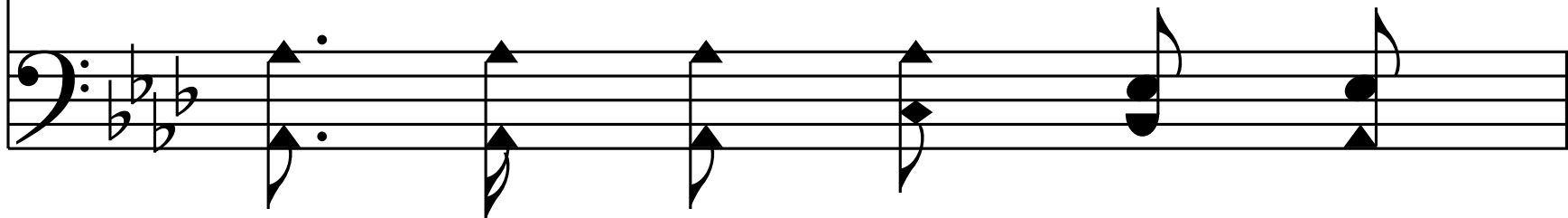




Prom-ised for you and for me;

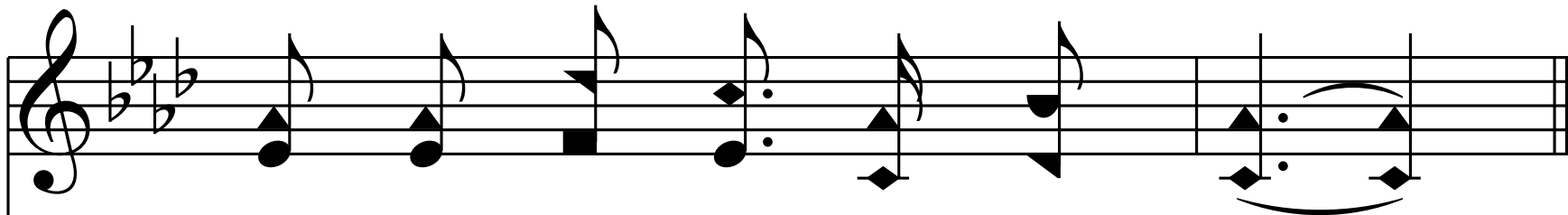
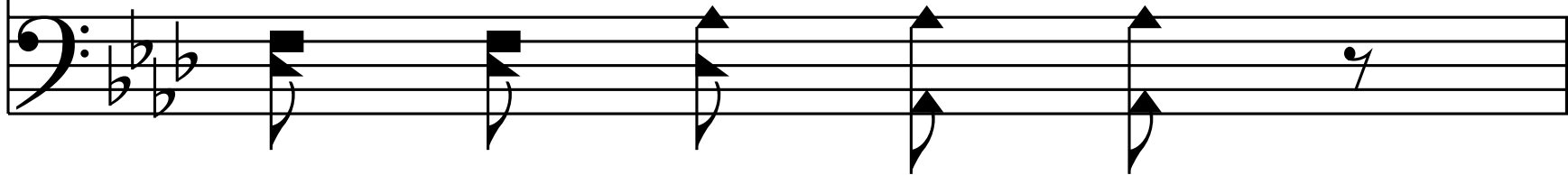


Tho' we have sinned, He has





mer - cy and par - don,



Par - don for you and for me.



Refrain

The first staff of music is written on a treble clef with a key signature of three flats (B-flat, E-flat, A-flat). It contains six measures of music. The first measure has a quarter note G4. The second measure has a dotted half note G4. The third measure has a quarter note G4. The fourth measure has a quarter note F4. The fifth measure has a quarter note E4. The sixth measure has a quarter note D4. A slur covers the last three measures (5, 6, and 7). There are fermatas over the final notes in measures 6 and 7. The bass line consists of quarter notes G2, F2, E2, D2, C2, and B1.

Come home, _____ come home, _____

Come home, _____ come home, _____

The second staff of music is written on a bass clef with a key signature of three flats (B-flat, E-flat, A-flat). It contains six measures of music. The first measure has a quarter note G2. The second measure has a quarter note F2. The third measure has a quarter note E2. The fourth measure has a quarter note D2. The fifth measure has a quarter note C2. The sixth measure has a quarter note B1. A slur covers the last three measures (5, 6, and 7). There are fermatas over the final notes in measures 6 and 7. The treble line consists of quarter notes G4, F4, E4, D4, C4, and B3.

Musical notation for the first system, featuring a treble clef, a key signature of three flats, and a dynamic marking of crescendo. The melody consists of eighth and quarter notes, with a repeat sign and a fermata over the final notes.

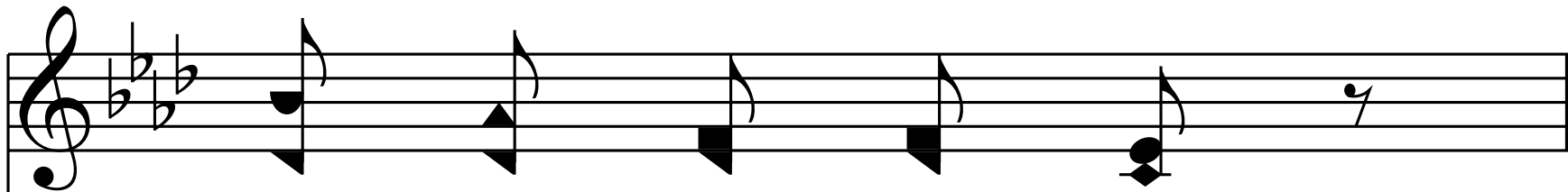
Ye who are wea-ry, come home! —

Musical notation for the second system, featuring a bass clef and a dynamic marking of piano (*p*). The accompaniment consists of quarter and eighth notes, with a fermata over the final notes.

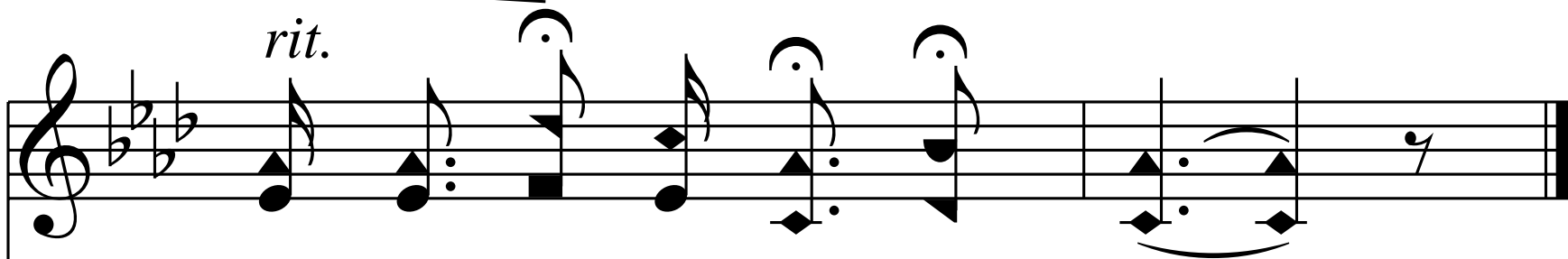
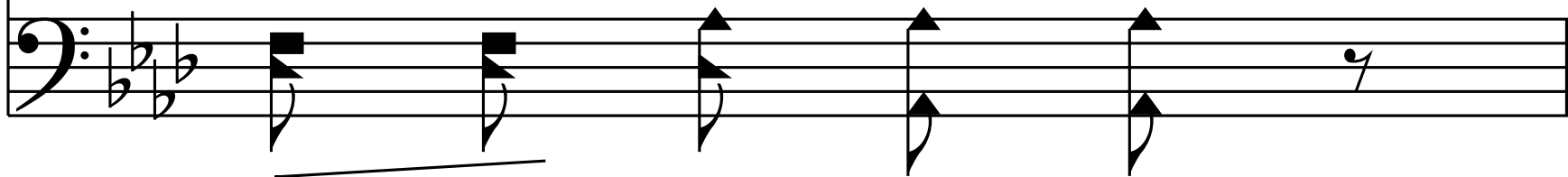
Musical notation for the third system, featuring a treble clef and a key signature of three flats. The melody consists of quarter notes.

Ear - nest - ly, tend - er - ly,

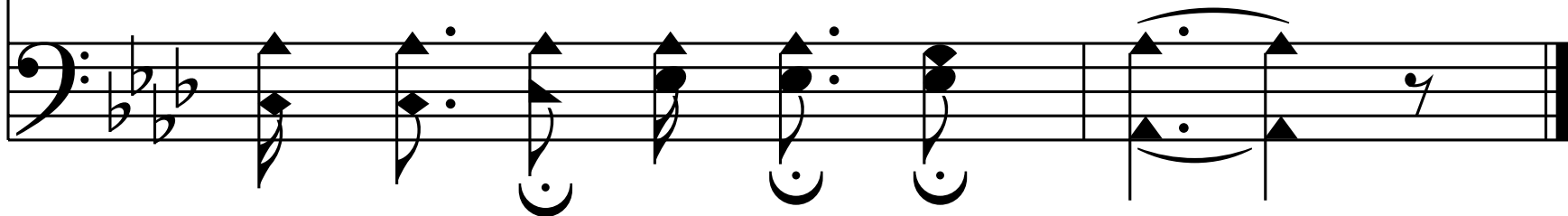
Musical notation for the fourth system, featuring a bass clef and a key signature of three flats. The accompaniment consists of quarter notes.



Je - sus is call - ing,



Call-ing, O sin-ner, Come home!



End of Hymn