

# O Child of God

*Joy cometh in the morning - Ps. 30:5*

F - 4 - SOL

Fanny J. Crosby

Ira D. Sankey

1. O child of God, wait pa - tient - ly When

dark thy path may be, And let thy faith lean

trust - ing - - ly On Him who cares for

This musical system consists of a vocal line and a bass line. The vocal line is written on a treble clef staff with a key signature of one flat (B-flat). It begins with a quarter rest, followed by a dotted quarter note on G4, and then a series of eighth notes: A4, Bb4, C5, Bb4, A4, G4, F4, E4, and D4. The bass line is written on a bass clef staff with the same key signature. It starts with a dotted quarter note on G3, followed by a quarter note on F3, and then a series of eighth notes: E3, D3, C3, B2, A2, G2, F2, and E2.

thee; And though the clouds hang drear - i - ly

This musical system also consists of a vocal line and a bass line. The vocal line is on a treble clef staff with a key signature of one flat. It begins with a dotted quarter note on G4, followed by quarter notes on A4, Bb4, and C5. The next measure contains a dotted quarter note on Bb4 and a quarter note on A4. This is followed by a quarter note on G4, a dotted quarter note on F4, and a quarter note on E4. The final measure contains a dotted quarter note on D4, a quarter note on C4, and a quarter note on B3. The bass line is on a bass clef staff with a key signature of one flat. It starts with a dotted quarter note on G3, followed by quarter notes on F3, E3, and D3. The next measure contains a dotted quarter note on C3 and a quarter note on B2. This is followed by quarter notes on A2, G2, and F2. The final measure contains a dotted quarter note on E2, a quarter note on D2, and a quarter note on C2.

Musical notation for the first system. The treble clef staff contains a melody starting with a quarter note G4, followed by quarter notes A4, Bb4, and C5. The bass clef staff provides accompaniment with a series of chords and single notes.

Up - on the brow of night, Yet in the morn - ing

Musical notation for the second system. The treble clef staff continues the melody with a quarter note D5, followed by quarter notes C5, Bb4, and A4. The bass clef staff continues the accompaniment.

Musical notation for the third system. The treble clef staff features a melody with a dotted quarter note G4, followed by quarter notes A4, Bb4, and C5. The bass clef staff continues the accompaniment.

joy will come, And fill my soul with light.

Musical notation for the fourth system. The treble clef staff concludes the melody with a quarter note D5, followed by quarter notes C5, Bb4, and A4. The bass clef staff concludes the accompaniment.

2. O child of God, He lov - eth thee, And

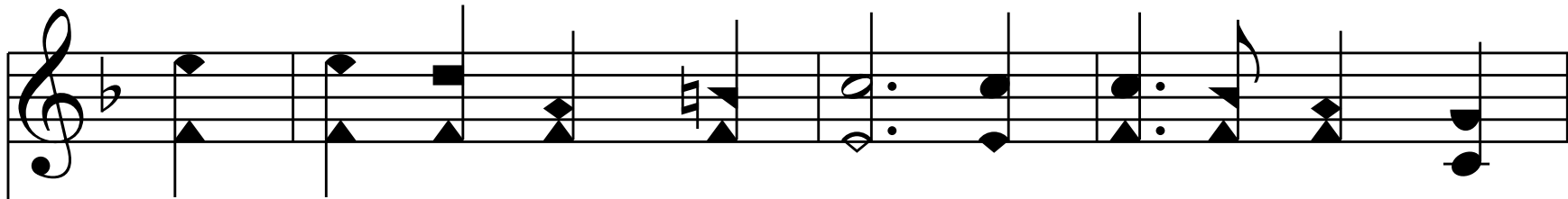
thou art all His own, With gen - tle hand He

lead - eth thee, Thou dost not walk a -

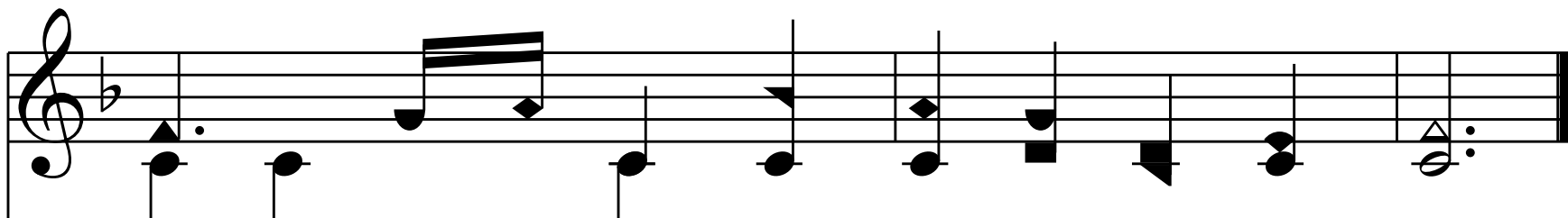
This musical system consists of two staves. The upper staff is in treble clef with a key signature of one flat (B-flat). It contains a melody with a dotted quarter note, followed by an eighth note, a quarter note, a half note, and a quarter note. The lower staff is in bass clef and provides a harmonic accompaniment with chords and single notes.

lone; And though thou watch - est wea - ri - ly

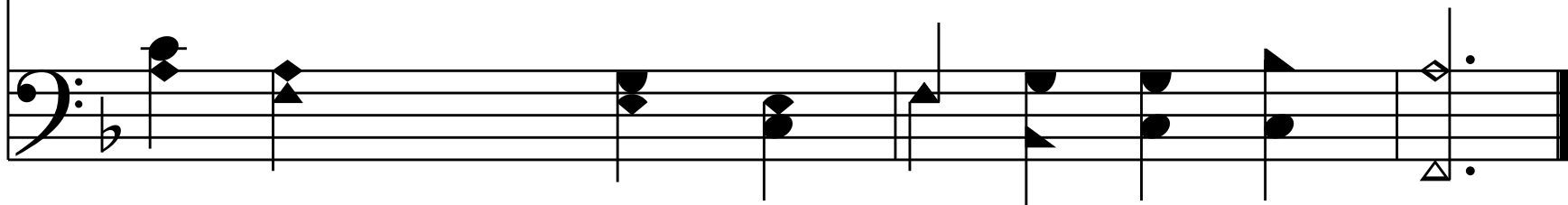
This musical system also consists of two staves in the same key signature and clefs as the first system. The upper staff continues the melody with a dotted quarter note, a quarter note, a half note, a quarter note, a dotted quarter note, and a quarter note. The lower staff continues the accompaniment with chords and single notes.

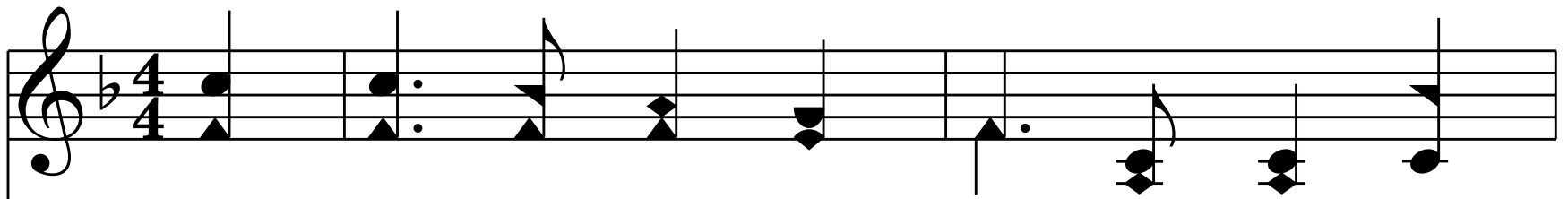


The long and storm - y night, Yet in the morn - ing

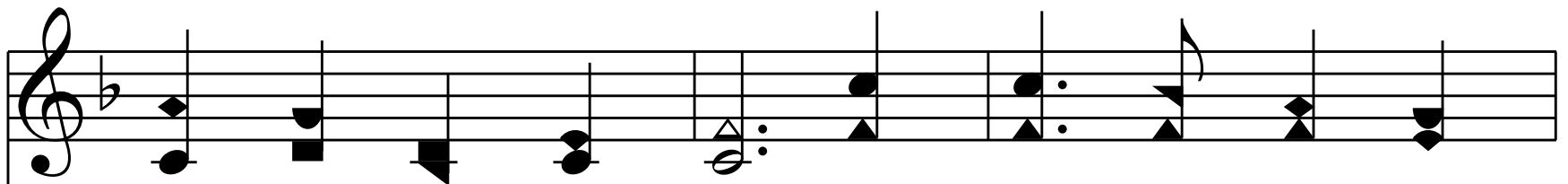
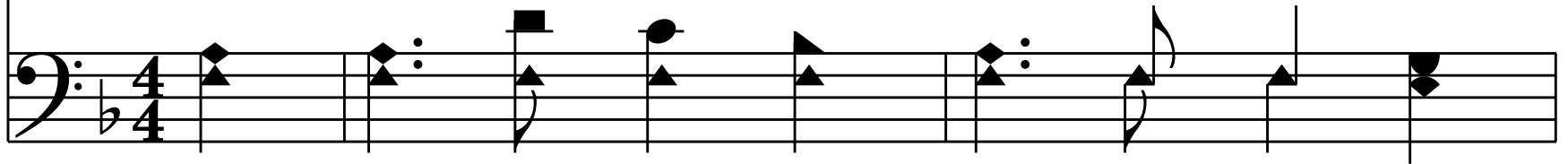


joy will come, And fill my soul with light.

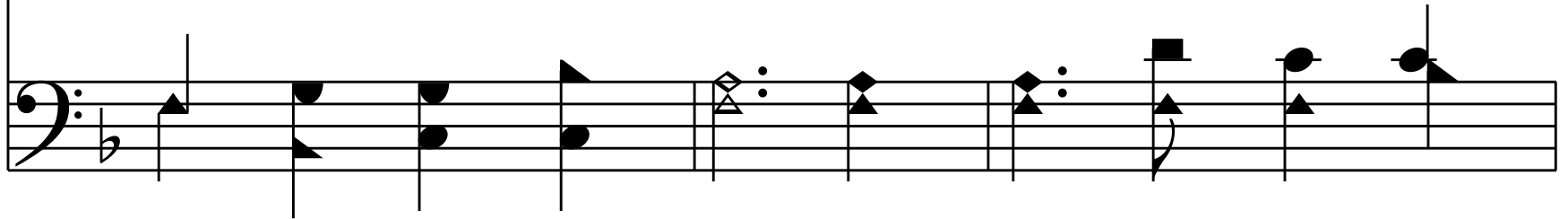




3. O child of God, How peace - ful - ly He



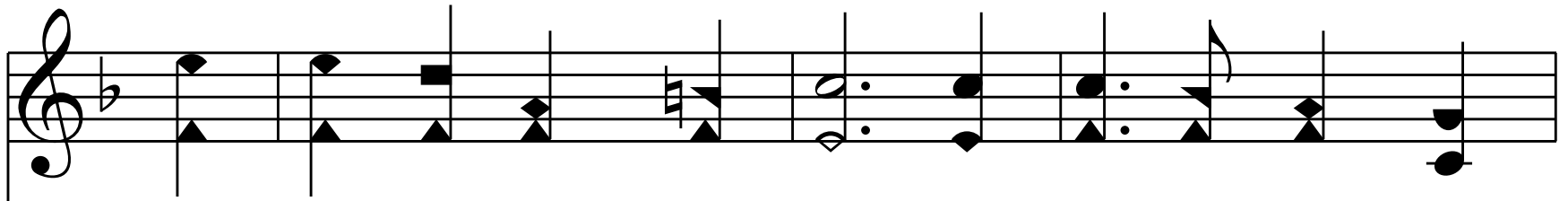
calms thy fears to rest, And draws thee up - ward



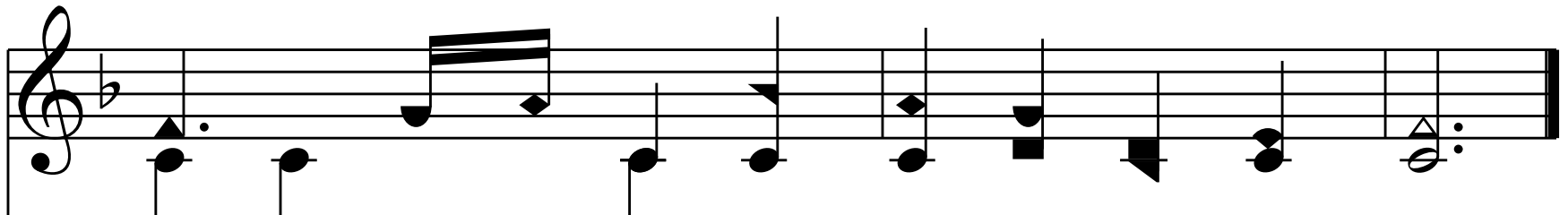


ten - der - - ly, Where dwell the pure and

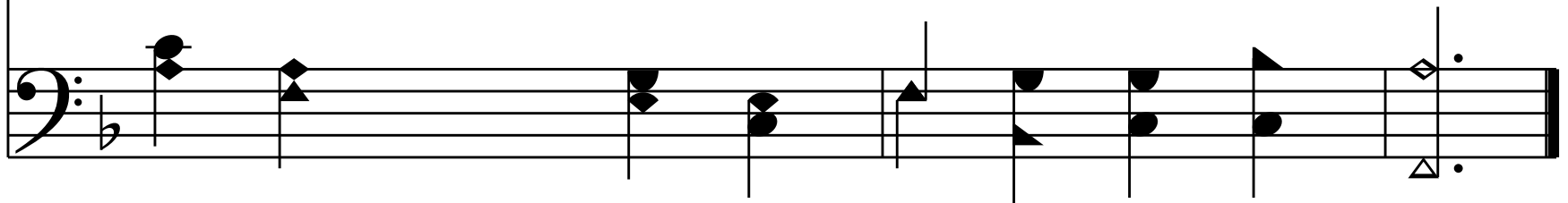
blest; And He who bend - eth si - lent - ly



A - bove the gloom of night, Will take thee home where



end - less joy Shall fill my soul with light.



— End —