

Lo, He Is God Alone

*All the earth shall worship thee, And shall sing unto thee;
They shall sing to thy name. Selah - Ps. 66:4*

D - 4 - DO

Fanny J. Crosby

William J. Kirkpatrick, 1894

Musical notation for the first system, treble clef, 4/4 time, key of D major. The melody consists of quarter notes: D4, E4, F#4, G4, A4, B4, C5, and D5. The bass line consists of quarter notes: D3, E3, F#3, G3, A3, B3, C4, and D4.

1. Sing to the Lord most ho - ly,

Musical notation for the second system, bass clef, 4/4 time, key of D major. The melody consists of quarter notes: D3, E3, F#3, G3, A3, B3, C4, and D4. The bass line consists of quarter notes: D3, E3, F#3, G3, A3, B3, C4, and D4.

Musical notation for the third system, treble clef, 4/4 time, key of D major. The melody consists of quarter notes: D4, E4, F#4, G4, A4, B4, C5, and D5. The bass line consists of quarter notes: D3, E3, F#3, G3, A3, B3, C4, and D4.

Sing to the Lord most high;

Musical notation for the fourth system, bass clef, 4/4 time, key of D major. The melody consists of quarter notes: D3, E3, F#3, G3, A3, B3, C4, and D4. The bass line consists of quarter notes: D3, E3, F#3, G3, A3, B3, C4, and D4.

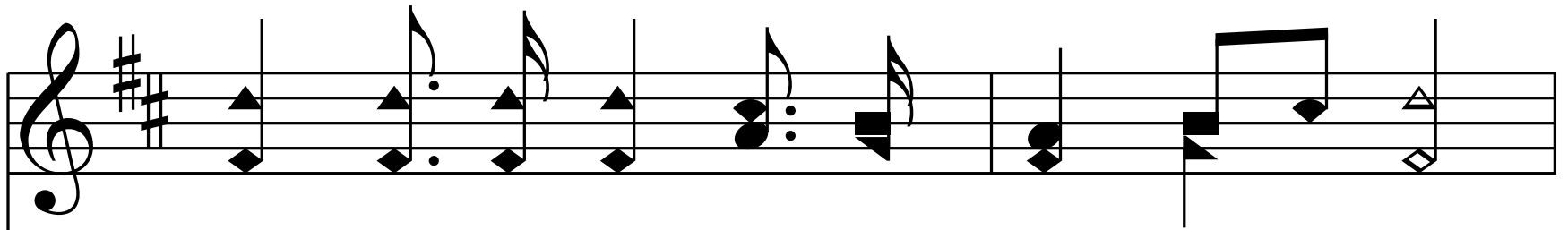
Might-y in power and great-ness,

Mak - er of earth and sky.

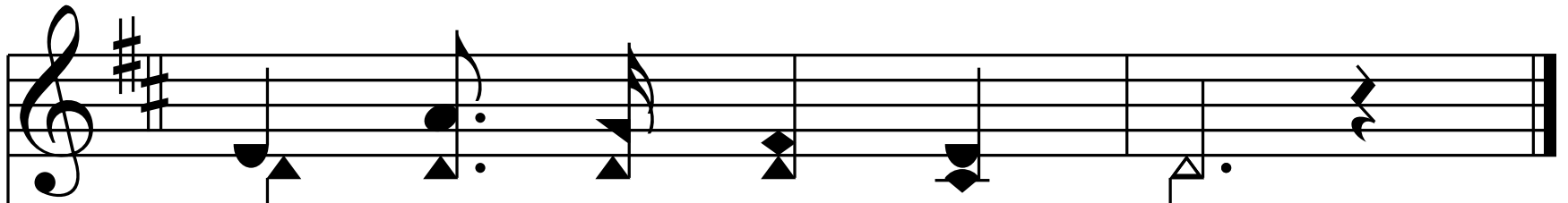
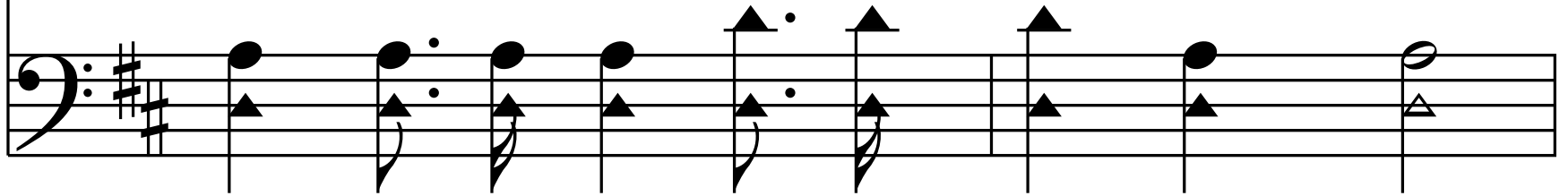
Chorus

Look un - to him, all ye ends of the earth,

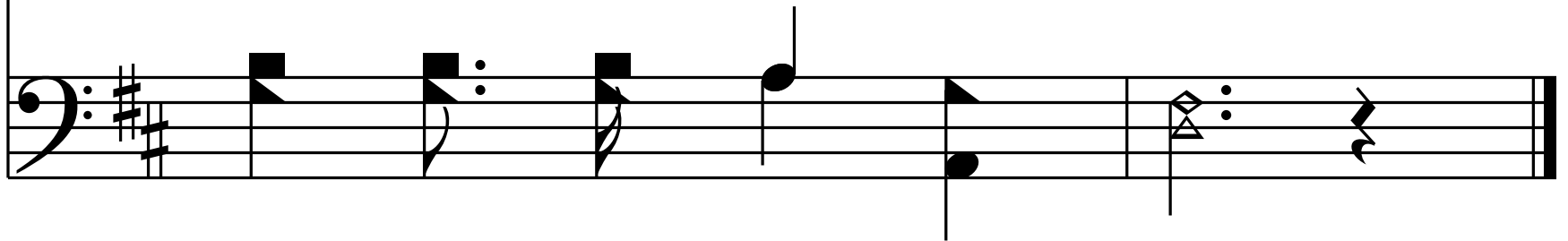
Bow at his sa - cred throne;



Look un - to him, and be saved by grace,



Lo, he is God a - lone.



End of Verse 1

2. Sing to the Lord, ye an - gels,

2. Sing to the Lord, ye an - gels,

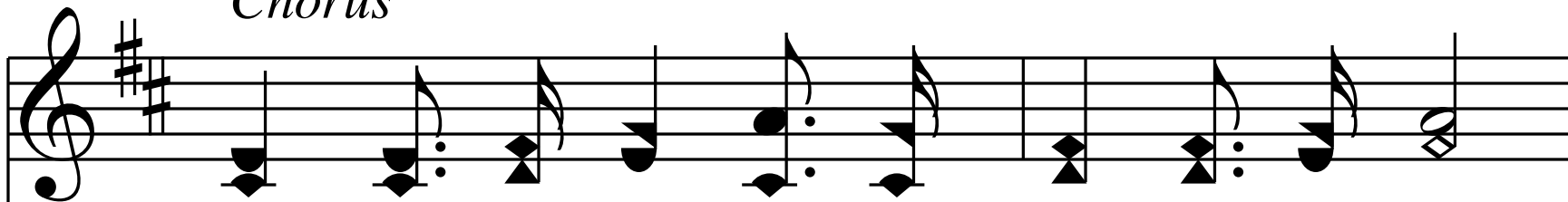
Ye that o - bey his will;

Ye that o - bey his will;

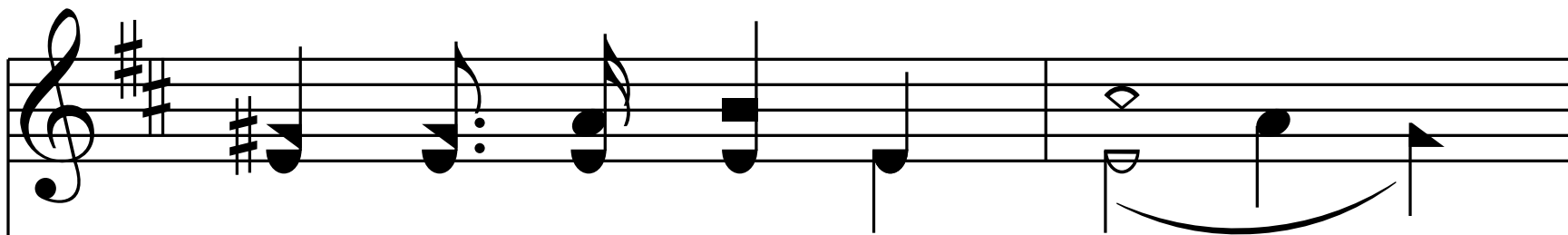
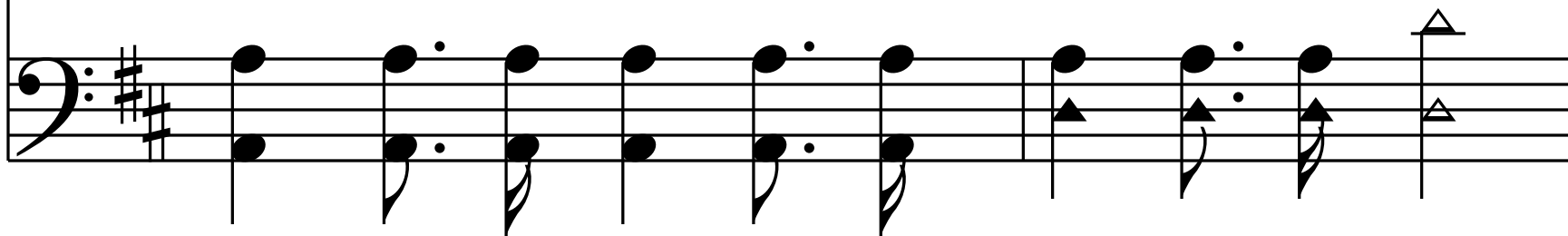
Ye that in strength ex - cell - ing,

Ev - er his word ful - fil.

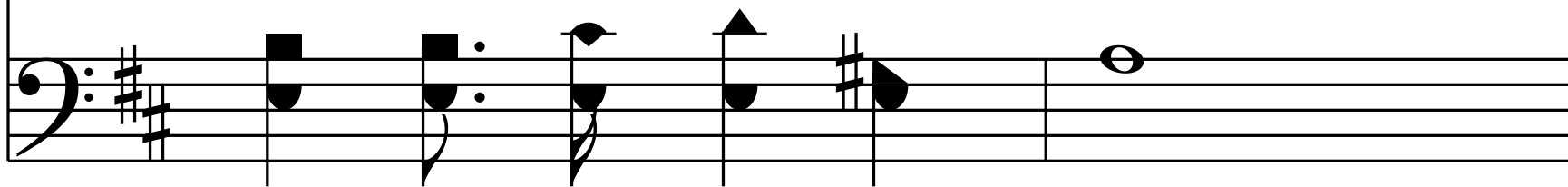
Chorus

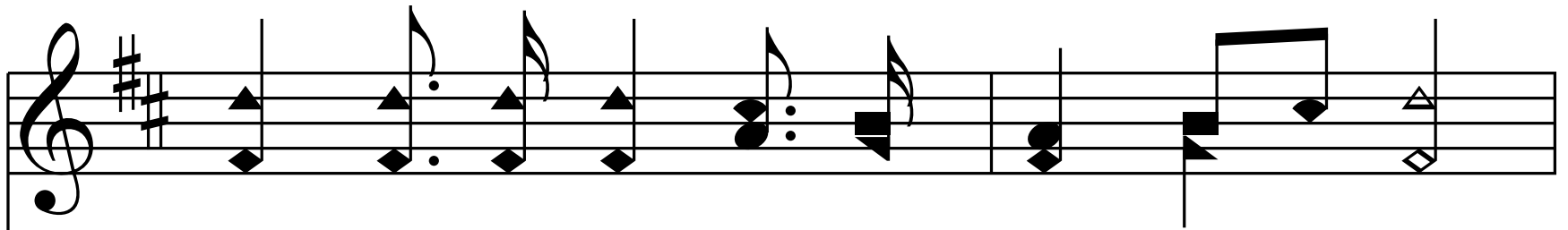


Look un - to him, all ye ends of the earth,

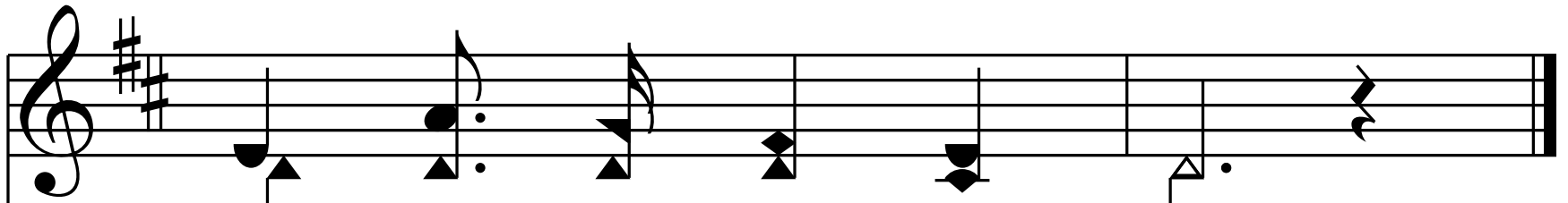
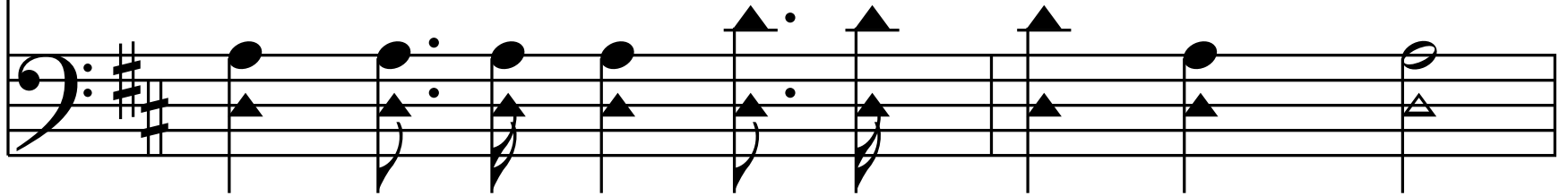


Bow at his sa - cred throne;

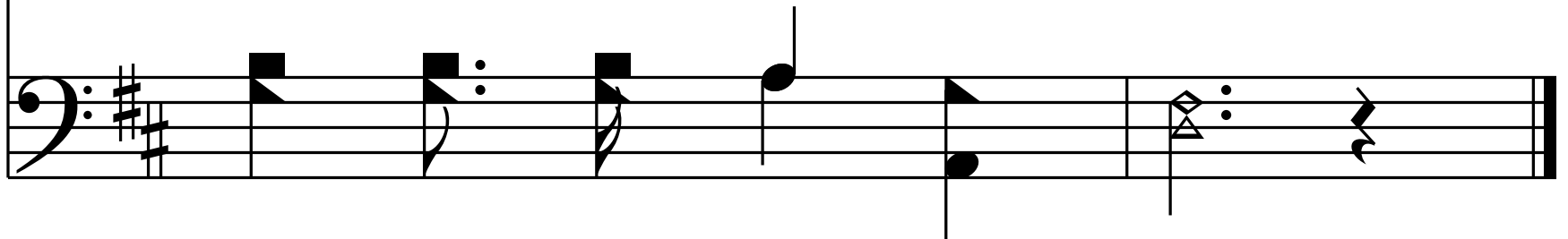




Look un - to him, and be saved by grace,



Lo, he is God a - lone.



End of Verse 2

3. Sing to the Lord most ho - ly,

Oh, ye re - deemed his bove;

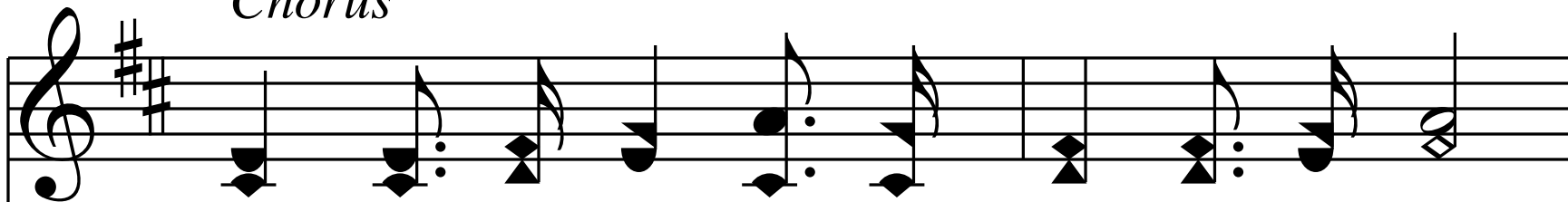
Praise ye the Rock e - ter - nal,

Foun - tain of life and love.

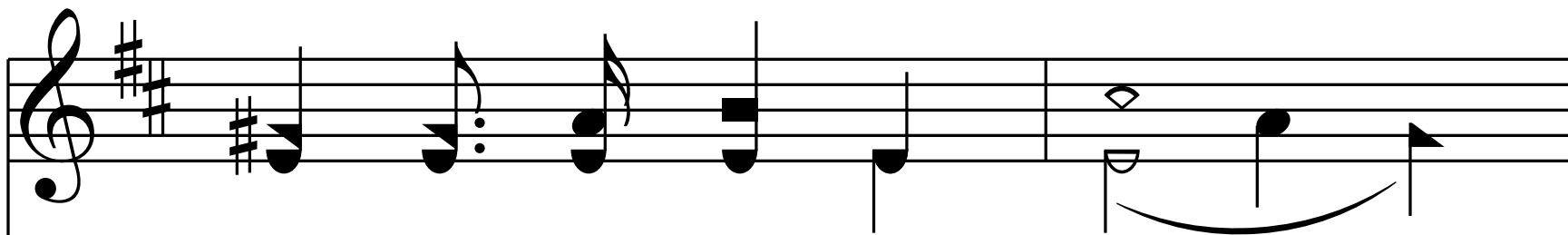
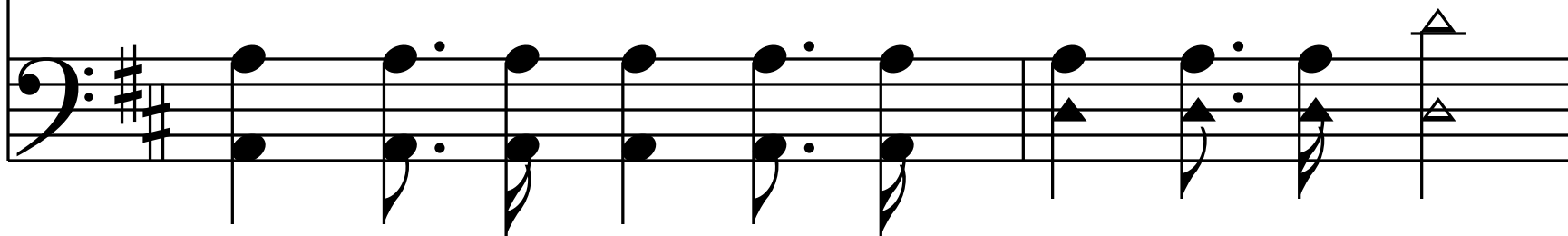
Foun - tain of life and love.

Foun - tain of life and love.

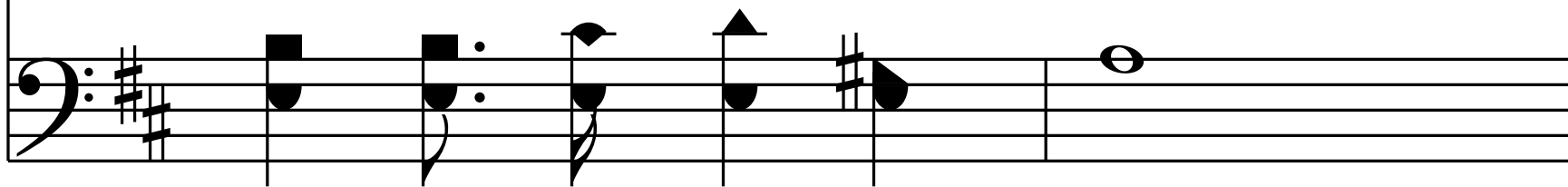
Chorus



Look un - to him, all ye ends of the earth,



Bow at his sa - cred throne;



Musical notation for the first line of the verse, featuring a treble clef, a key signature of two sharps (F# and C#), and a melody of eighth and quarter notes.

Look un - to him, and be saved by grace,

Musical notation for the second line of the verse, featuring a bass clef, a key signature of two sharps (F# and C#), and a melody of quarter and eighth notes.

Musical notation for the third line of the verse, featuring a treble clef, a key signature of two sharps (F# and C#), and a melody of quarter and eighth notes.

Lo, he is God a - lone.

Musical notation for the fourth line of the verse, featuring a bass clef, a key signature of two sharps (F# and C#), and a melody of quarter and eighth notes.

End of Verse 3

4. Sing to the Lord most ho - ly,

4. Sing to the Lord most ho - ly,

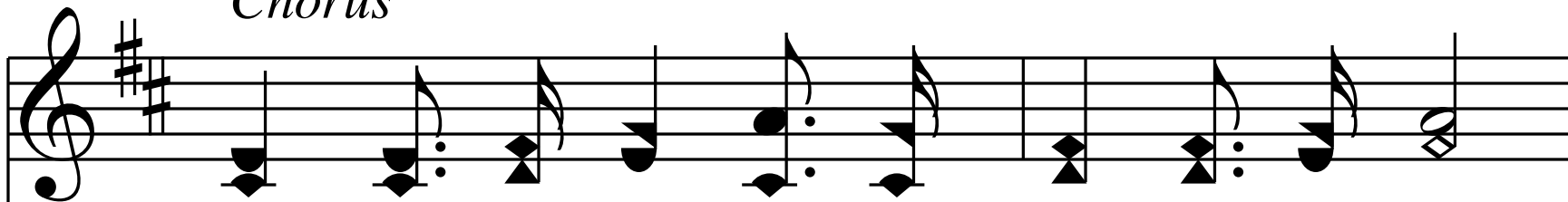
An - cient of end - less days;

An - cient of end - less days;

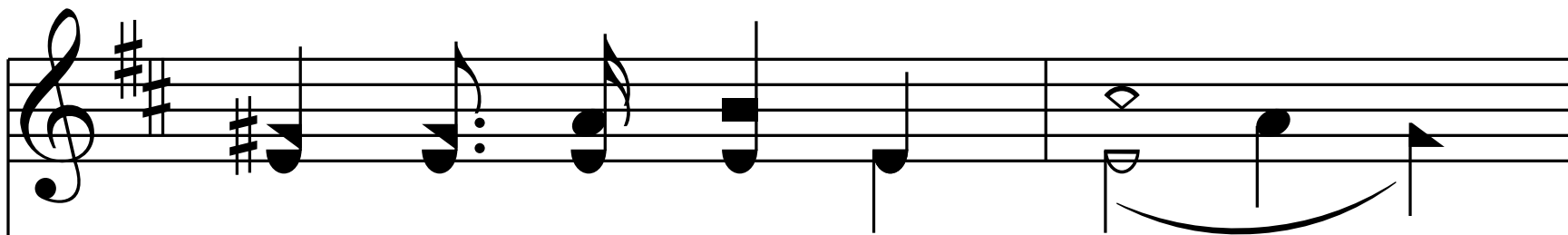
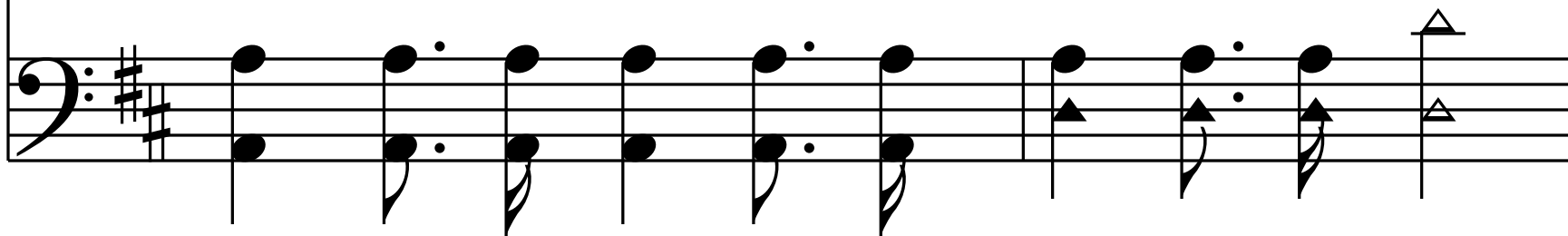
Haste to his gates with glad - ness,

En - ter his courts with praise.

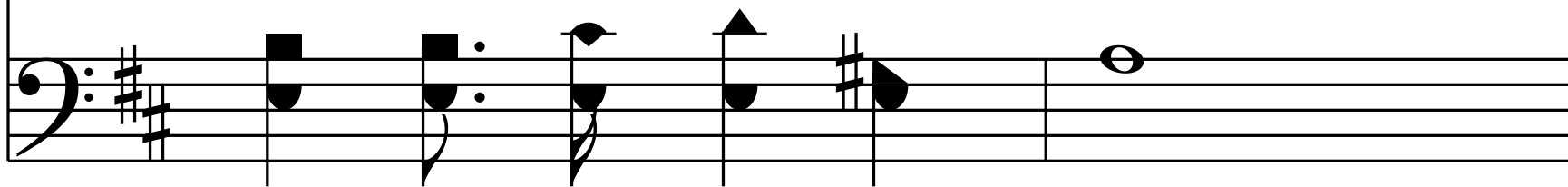
Chorus



Look un - to him, all ye ends of the earth,



Bow at his sa - cred throne;



Look un - to him, and be saved by grace,

Lo, he is God a - lone.

End of Hymn