

Let The Lower Lights Be Burning

Even so let your light shine before men; that they may see your good works and glorify your Father who is in heaven. - Matt. 5:16

B♭ - 4 - SOL

Philip P. Bliss

Philip P. Bliss, 1871

Public Domain

HymnsToGod.org

Musical notation for the first system, treble clef, 3/4 time signature, key of B-flat major. The melody consists of the following notes: G4 (quarter), F4 (quarter), E4 (quarter), D4 (quarter), C4 (quarter), B3 (quarter), A3 (quarter), G3 (quarter).

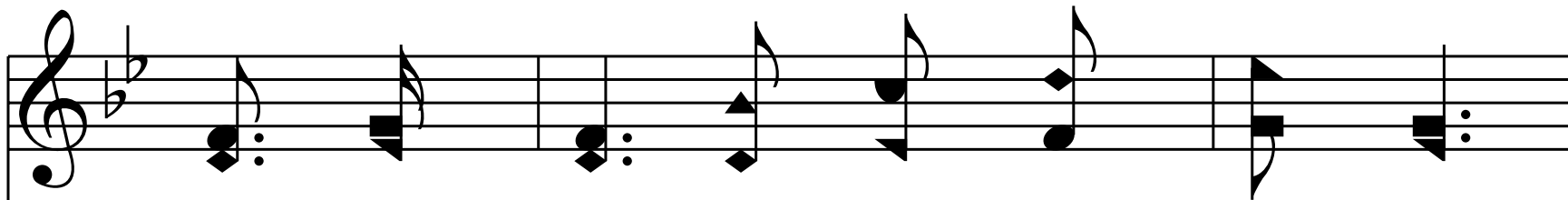
1. Bright-ly beams our Fa-ther's mer-cy

Musical notation for the first system, bass clef, 3/4 time signature, key of B-flat major. The accompaniment consists of the following notes: G3 (quarter), F3 (quarter), E3 (quarter), D3 (quarter), C3 (quarter), B2 (quarter), A2 (quarter), G2 (quarter).

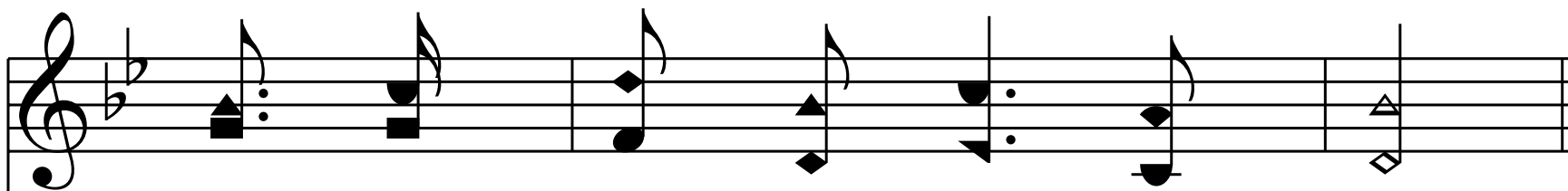
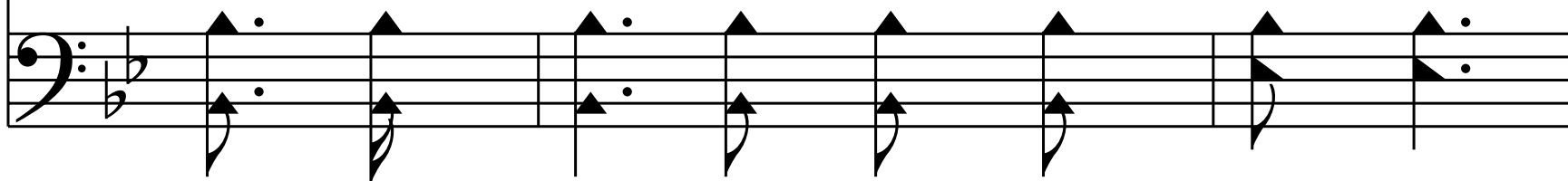
Musical notation for the second system, treble clef, 3/4 time signature, key of B-flat major. The melody consists of the following notes: G4 (quarter), F4 (quarter), E4 (quarter), D4 (quarter), C4 (quarter), B3 (quarter), A3 (quarter), G3 (quarter).

From His light-house ev - er - more,

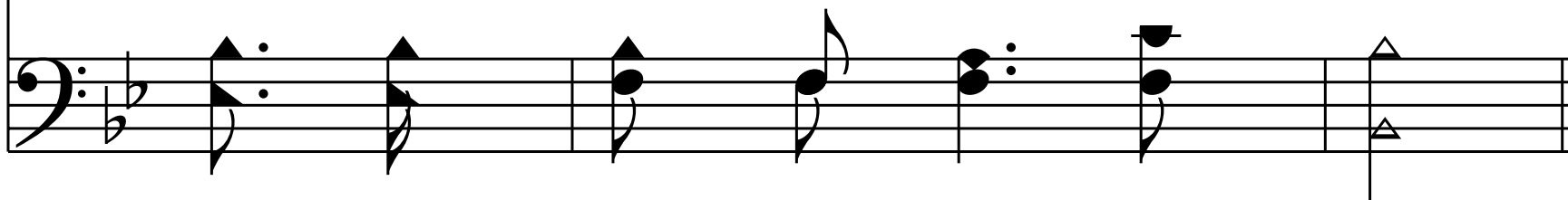
Musical notation for the second system, bass clef, 3/4 time signature, key of B-flat major. The accompaniment consists of the following notes: G3 (quarter), F3 (quarter), E3 (quarter), D3 (quarter), C3 (quarter), B2 (quarter), A2 (quarter), G2 (quarter).



But to us He gives the keep - ing,



Of the lights a - long the shore.



Chorus

Let the low - er lights be burn - ing!

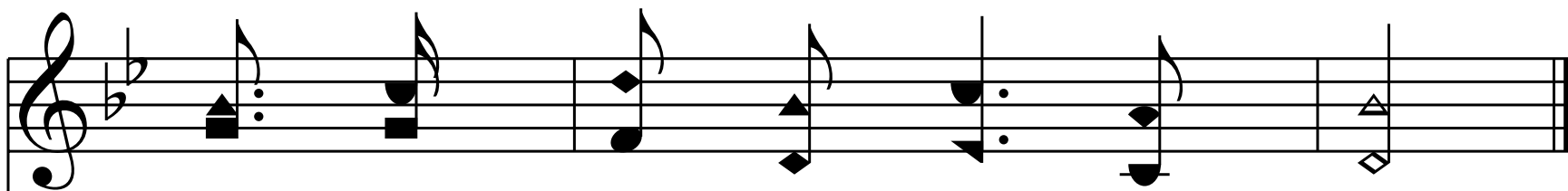
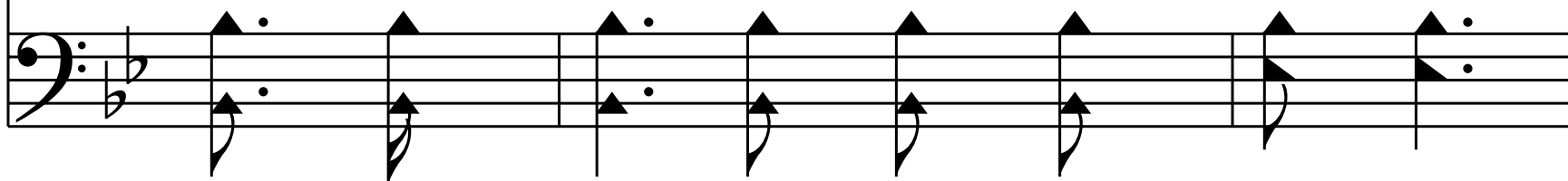
The first system of the chorus consists of two staves. The upper staff is in treble clef with a key signature of two flats (B-flat and E-flat). It contains four measures of music: the first measure has two eighth notes (F4 and G4), the second has a dotted quarter note (F4), the third has a dotted quarter note (F4), and the fourth has a dotted quarter note (F4). The lower staff is in bass clef and contains four measures: the first has two eighth notes (C3 and D3), the second has a dotted quarter note (C3), the third has a dotted quarter note (C3), and the fourth has a dotted quarter note (C3).

Send a gleam a - cross the wave!

The second system of the chorus also consists of two staves. The upper staff is in treble clef with a key signature of two flats. It contains four measures: the first has two eighth notes (F4 and G4), the second has a dotted quarter note (F4), the third has a dotted quarter note (F4), and the fourth has a dotted quarter note (F4). The lower staff is in bass clef and contains four measures: the first has two eighth notes (C3 and D3), the second has a dotted quarter note (C3), the third has a dotted quarter note (C3), and the fourth has a dotted quarter note (C3).



Some poor faint-ing, strug-gling sea - man



You may res - cue, you may save.



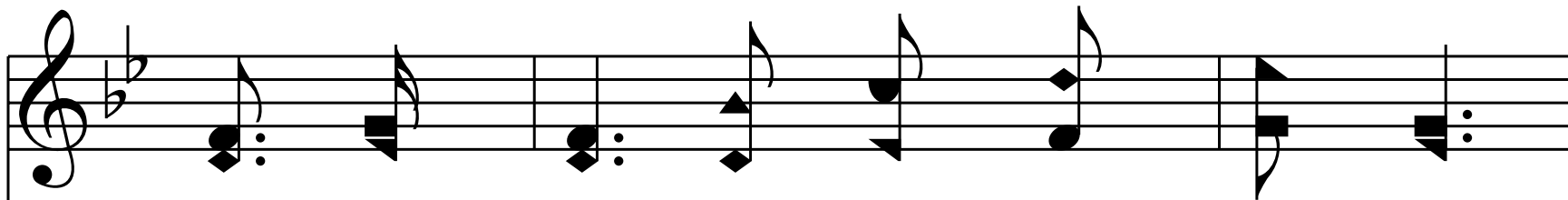
End of Verse 1

2. Dark the night of sin has set - tled,

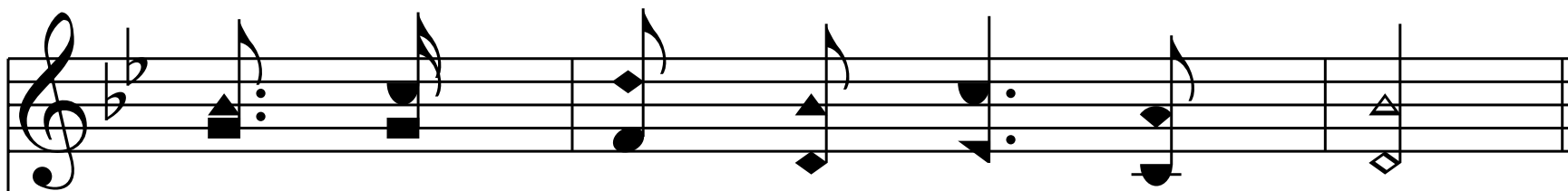
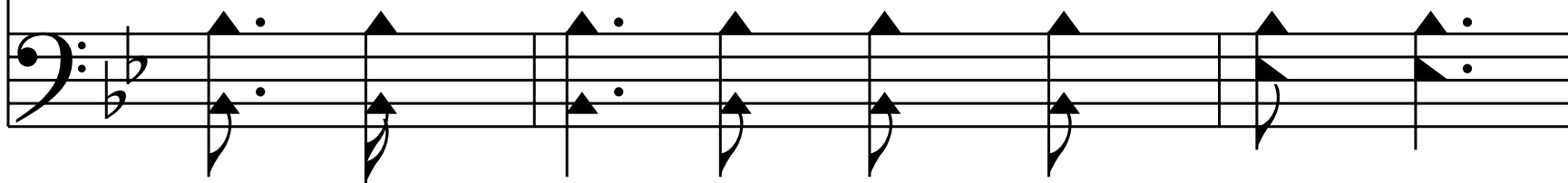
2. Dark the night of sin has set - tled,

Loud the an - gry bil - lows roar;

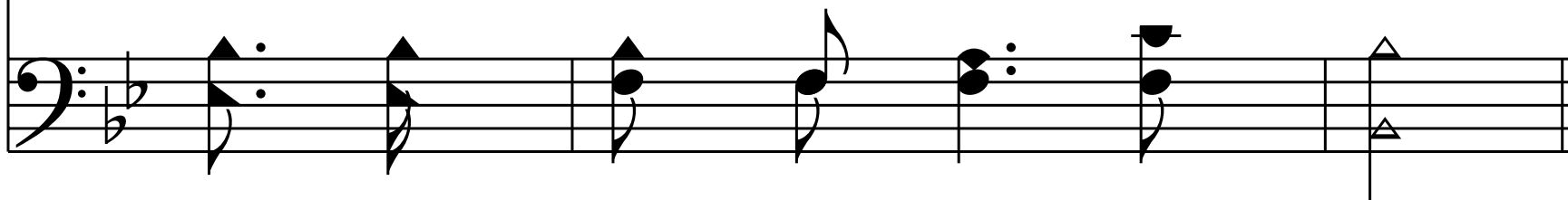
Loud the an - gry bil - lows roar;



Ea - ger eyes are watch-ing, long - ing,



For the lights a - long the shore.



Chorus

Let the low - er lights be burn - ing!

Send a gleam a - cross the wave!

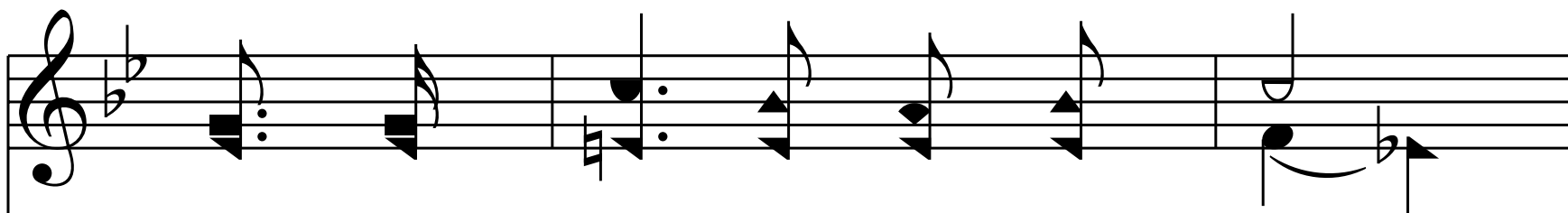
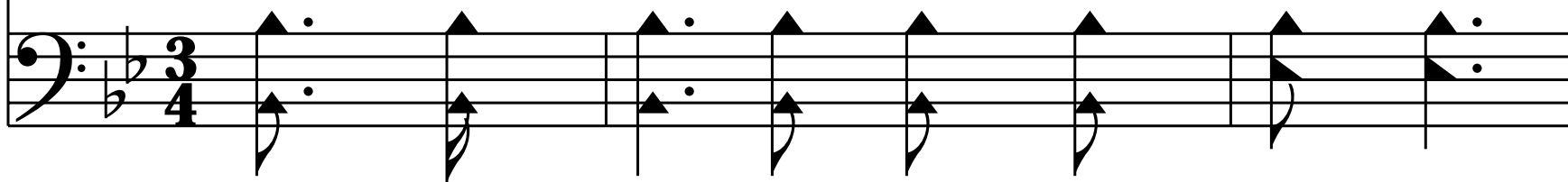
Some poor faint-ing, strug-gling sea - man

You may res - cue, you may save.

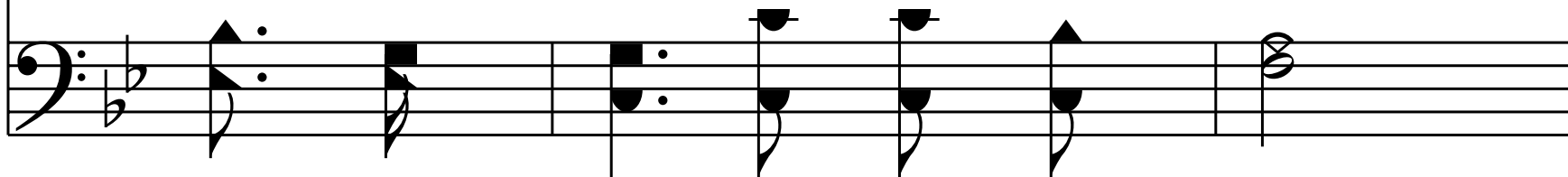
End of Verse 2

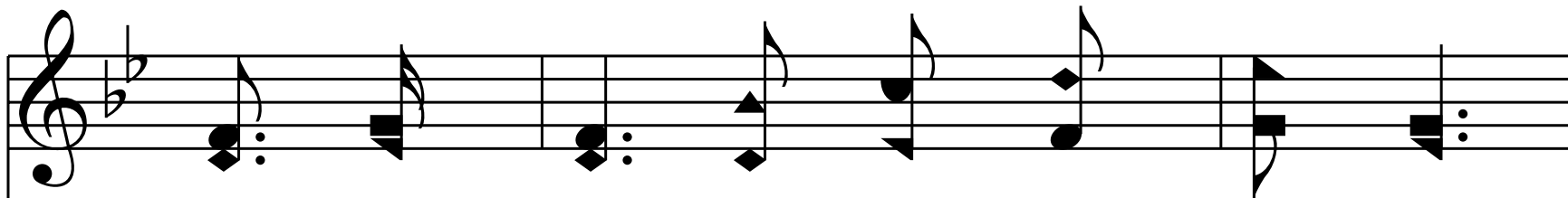


3. Trim your fee - ble lamp, My broth - er;

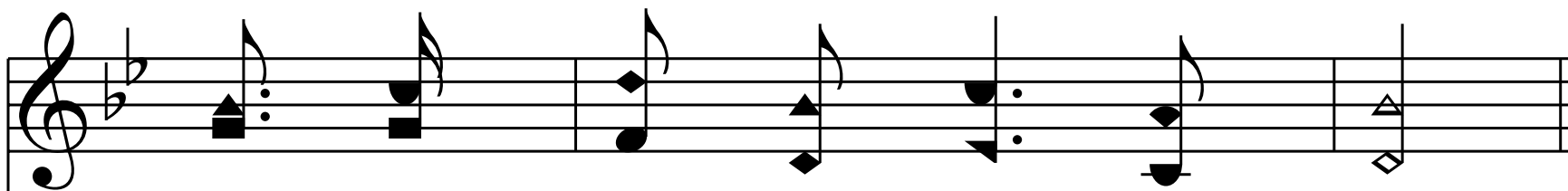
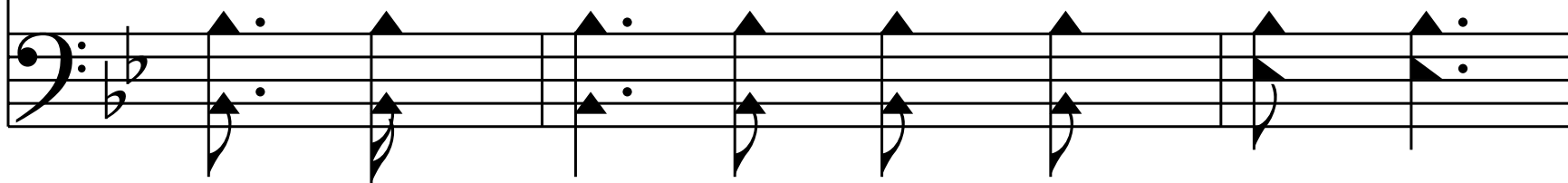


Some poor sail - or tem - pest tossed,

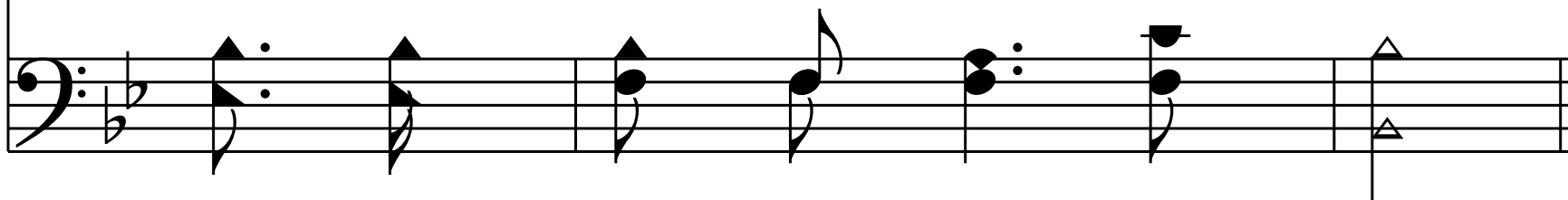




Try - ing now to make the har - bor,



In the dark - ness may be lost.



Chorus

Let the low - er lights be burn - ing!

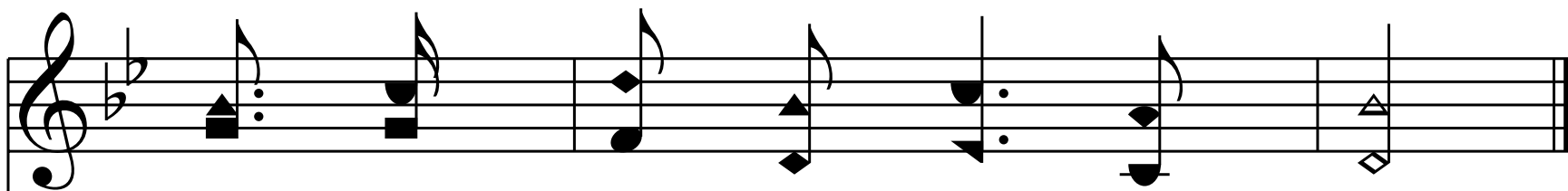
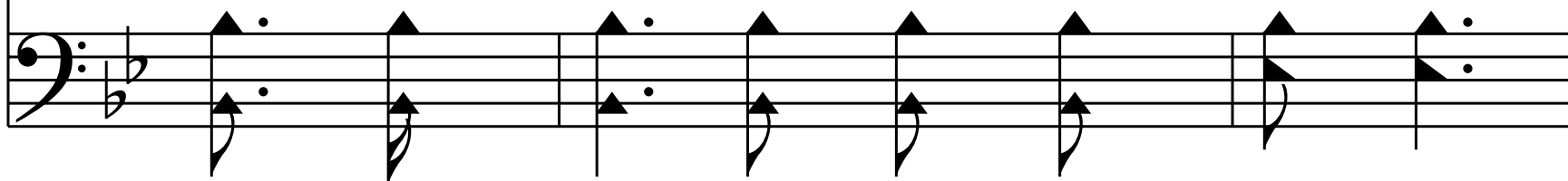
The first system of the chorus consists of two staves. The upper staff is in treble clef with a key signature of two flats (B-flat and E-flat). The lower staff is in bass clef with the same key signature. The lyrics are written below the staves. The melody in the treble staff begins with a dotted quarter note, followed by an eighth note, and then a series of dotted quarter notes. The bass line provides a steady accompaniment with dotted quarter notes and eighth notes.

Send a gleam a - cross the wave!

The second system of the chorus continues with two staves. The upper staff is in treble clef with a key signature of two flats. The lower staff is in bass clef with the same key signature. The lyrics are written below the staves. The melody in the treble staff features a dotted quarter note, an eighth note, and a half note. The bass line continues with dotted quarter notes and eighth notes, ending with a whole note chord.



Some poor faint-ing, strug-gling sea - man



You may res - cue, you may save.



End of Hymn