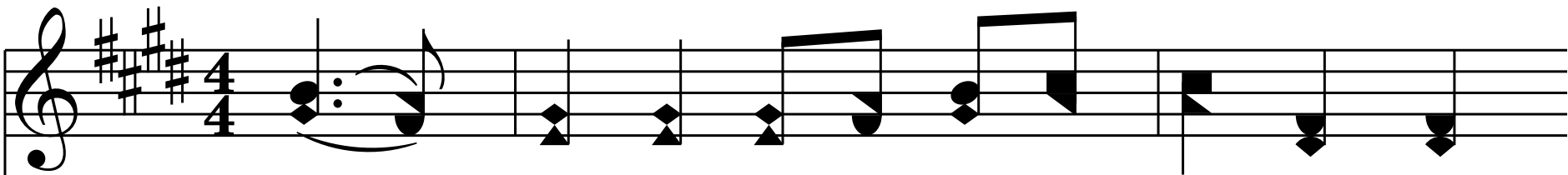


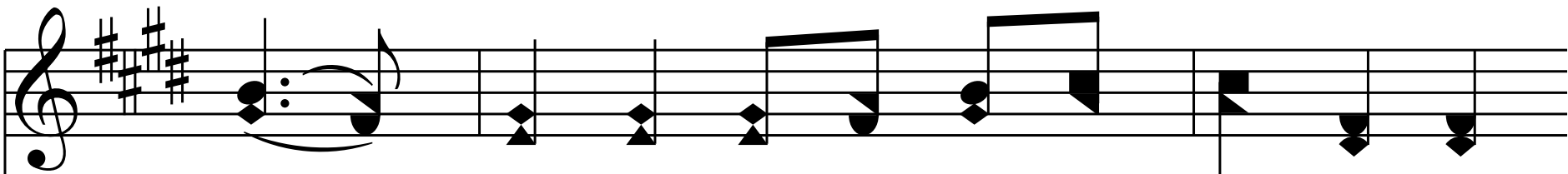
How Shall The Young Secure

*Wherewith shall a young man cleanse his way?
By taking heed thereto according to thy word. - Ps. 119:9*

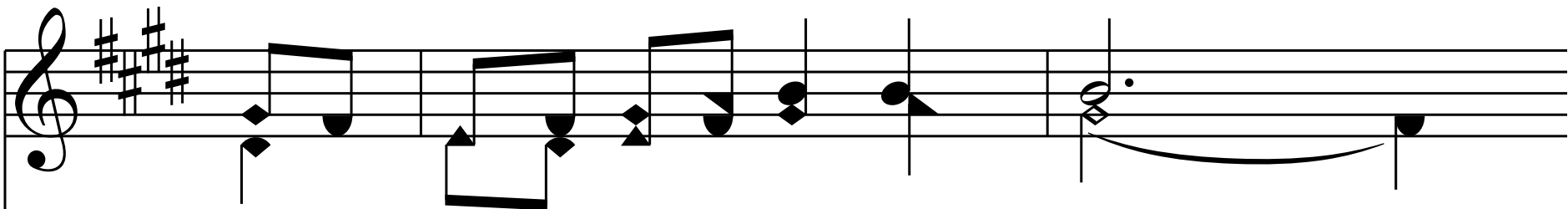
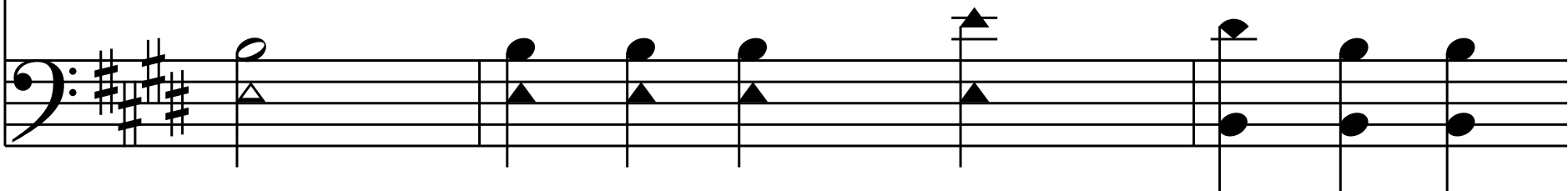
E - 4 - SOL
Issac Watts

Ludwig von Beethoven

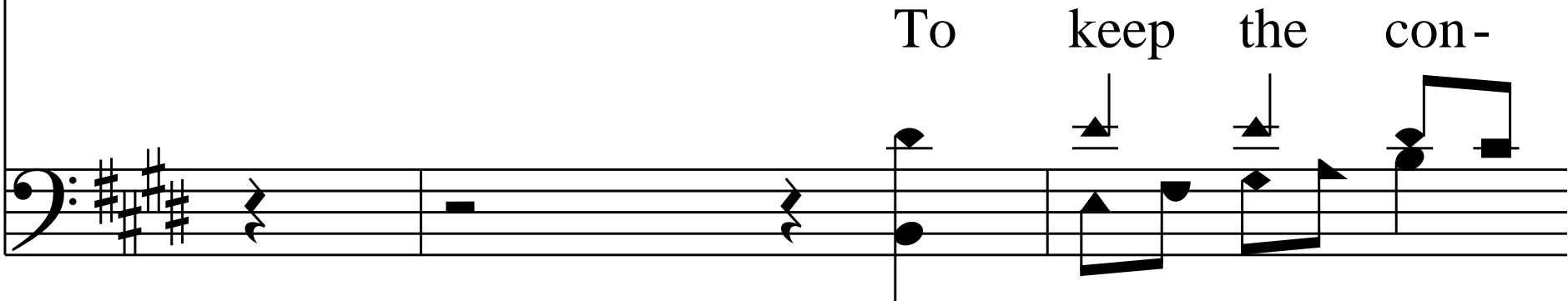




Thy word the choic - est rules im - parts



To keep the con-science clean, _____

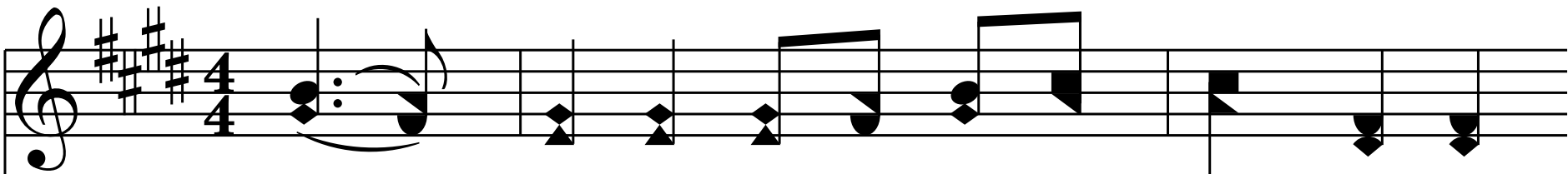


To keep the con-

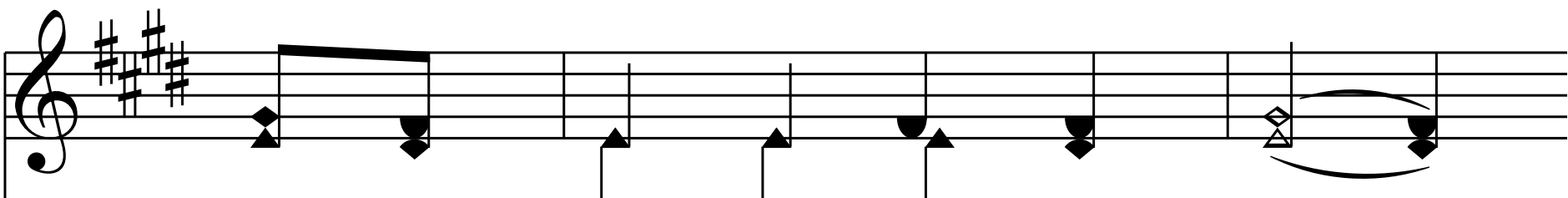
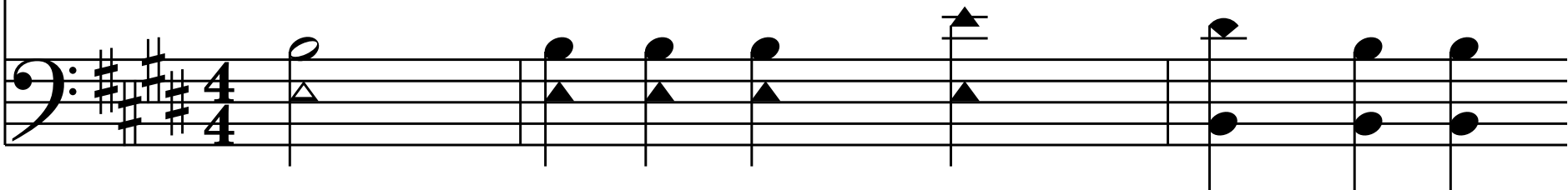
To keep the con-

To keep the con - science clean.
science clean _ To keep the con-science clean.

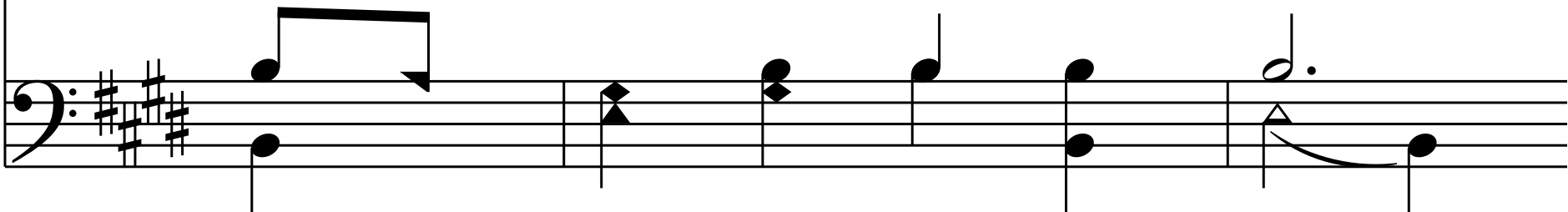
science clean, To keep the con - science clean.

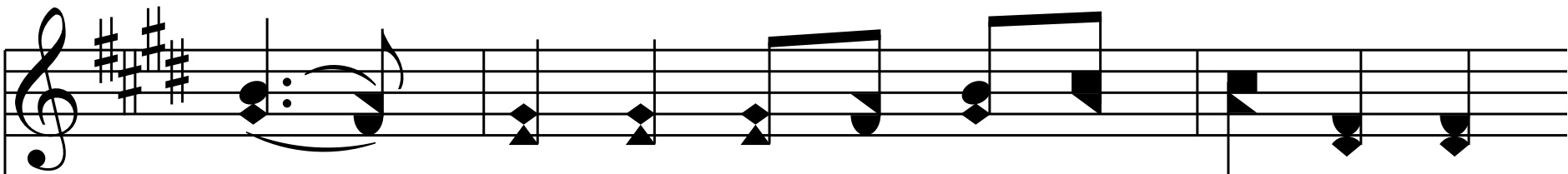


2. 'Tis like the sun, a heav'n-ly light,

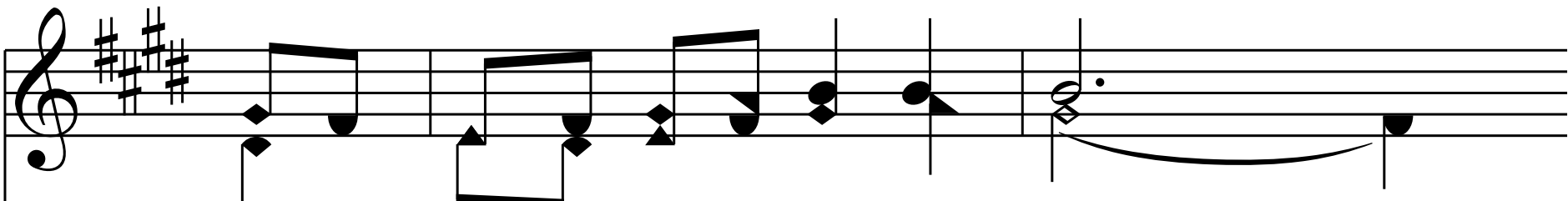
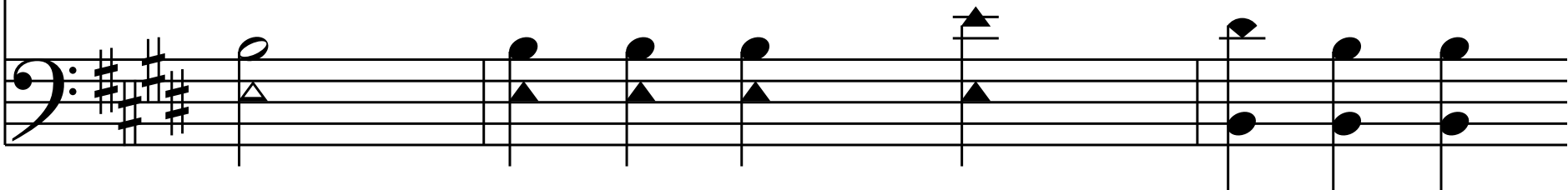


That guides us all the day;

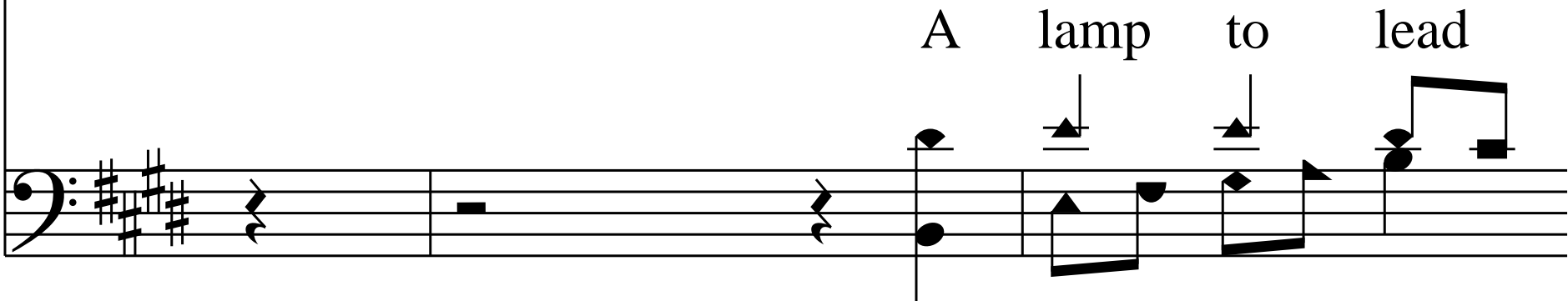




And, thro' the dan - gers of the night,



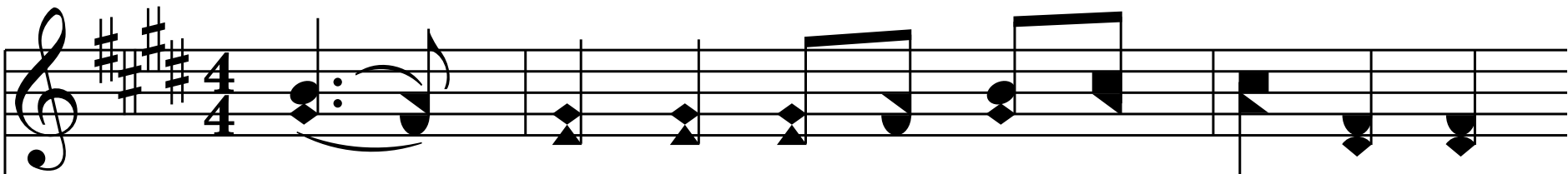
A lamp to lead our way, _____



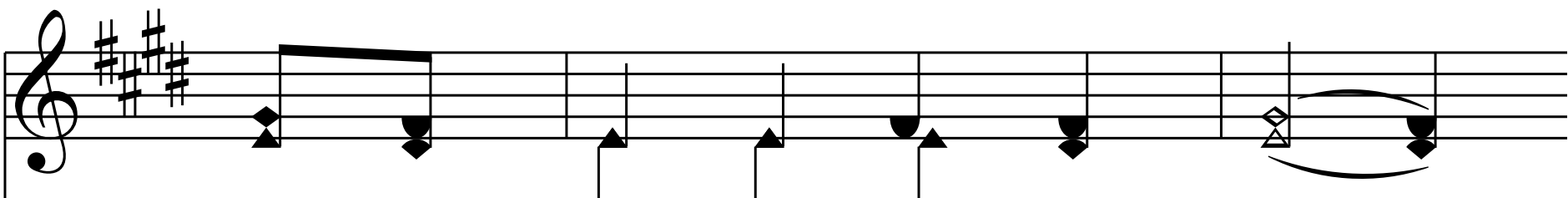
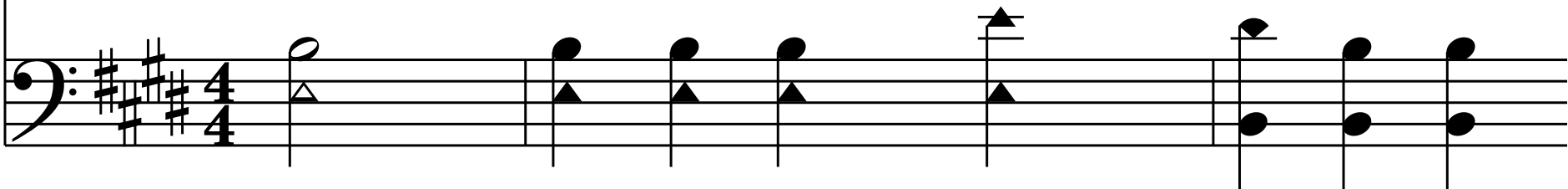
A lamp to lead

A lamp to lead our way.
our way, A lamp to lead our way.

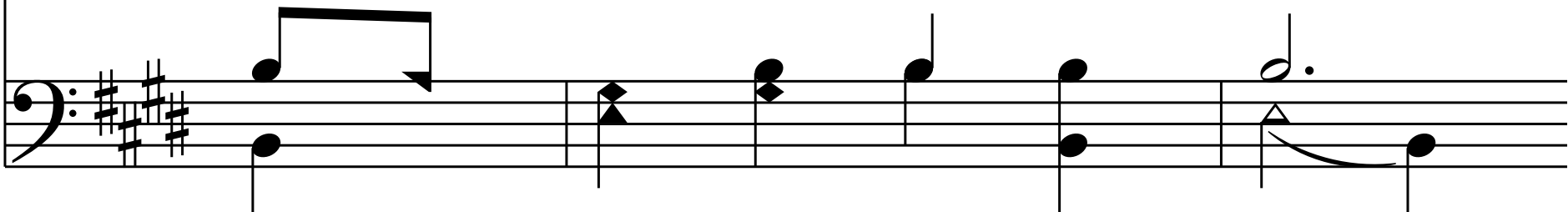
End of Verse 2



3. Thy word is ev - er - last-ing truth;



How pure is ev - 'ry page!



That ho - ly book shall guide our youth,

This block contains the first line of a musical score. It features a treble and a bass staff, both in the key of D major (indicated by two sharps: F# and C#). The treble staff begins with a treble clef and a key signature of two sharps. The melody starts with a half note G4, followed by a quarter note A4, then a half note B4. The bass staff begins with a bass clef and a key signature of two sharps. The accompaniment starts with a half note G2, followed by a quarter note A2, then a half note B2. The lyrics "That ho - ly book shall guide our youth," are written below the staves, aligned with the notes.

And well sup - port our age, _____
And well sup - port
And well sup - port

This block contains the second line of the musical score. It features a treble and a bass staff, both in the key of D major. The treble staff continues the melody from the first line, starting with a half note C5, followed by a quarter note D5, then a half note E5. The bass staff continues the accompaniment from the first line, starting with a half note G2, followed by a quarter note A2, then a half note B2. The lyrics "And well sup - port our age, _____" are written below the staves, aligned with the notes. The second line of the lyrics, "And well sup - port", is written below the first line, and the third line, "And well sup - port", is written below the second line.

And well sup - port our age.
our age, And well sup - port our age.

End of Hymn