

Glory To His Name

*I will praise thee, O Lord my God, with my whole heart
And I will glorify thy name for evermore. - Ps. 86:12*

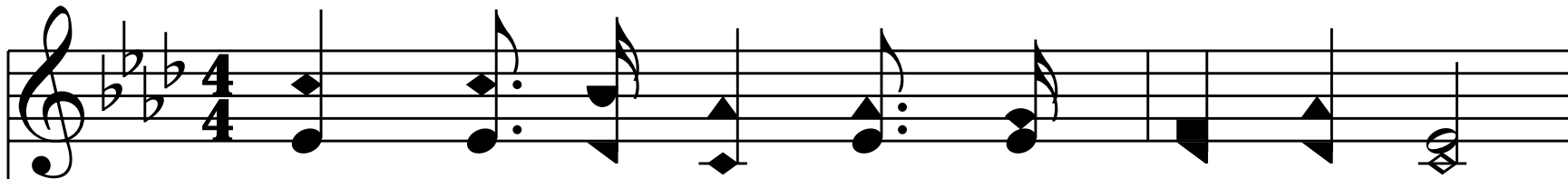
A \flat - 4 - SOL

Elisha A. Hoffman, 1878

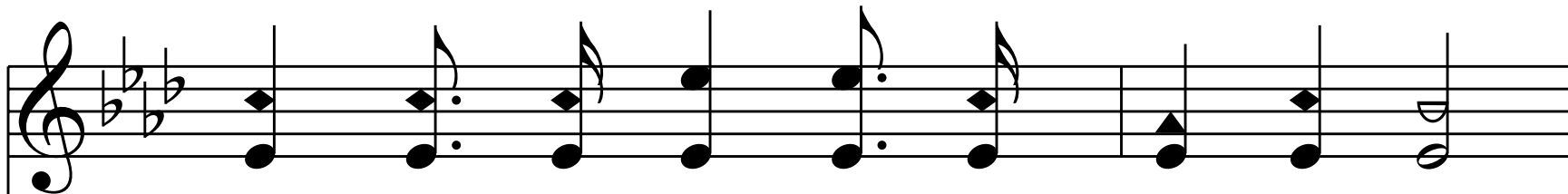
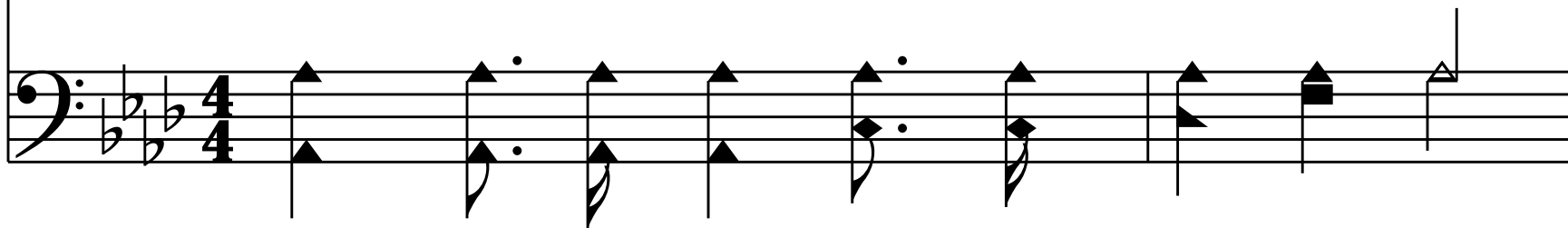
John H. Stockton

Public Domain

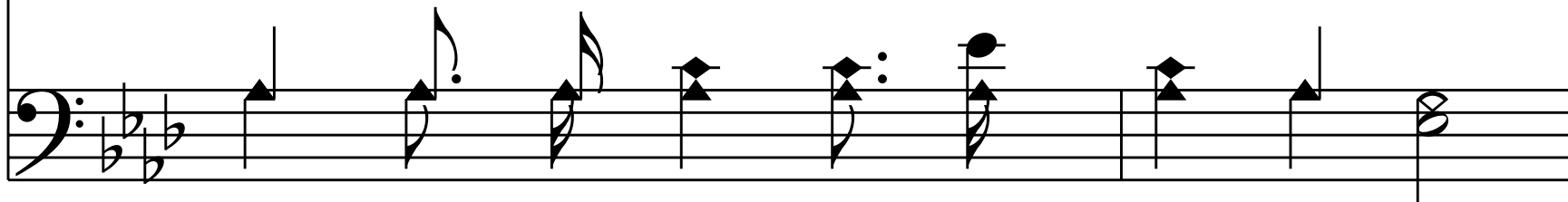
HymnsToGod.org

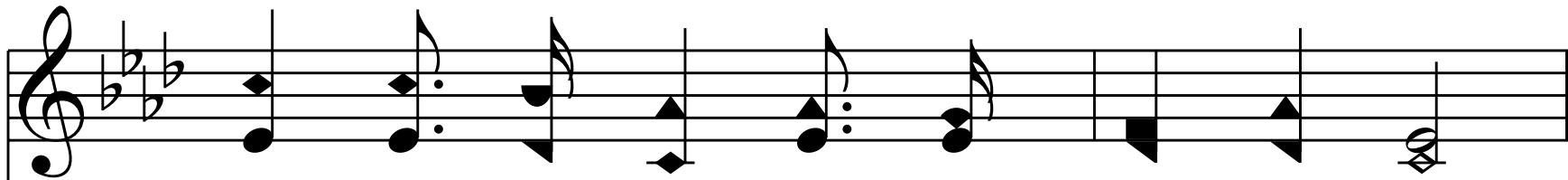


1. Down at the cross where my Sav - ior died,

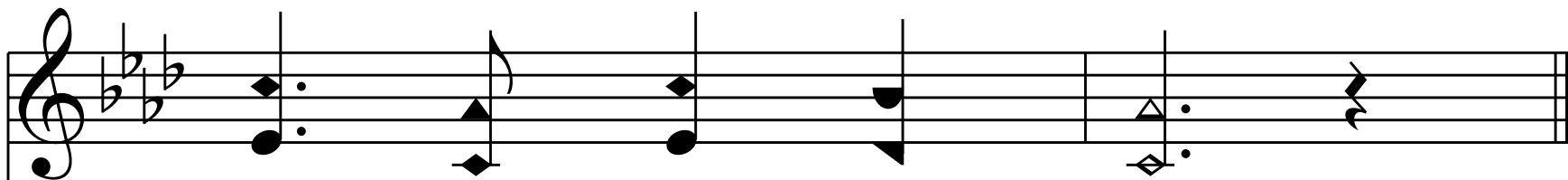
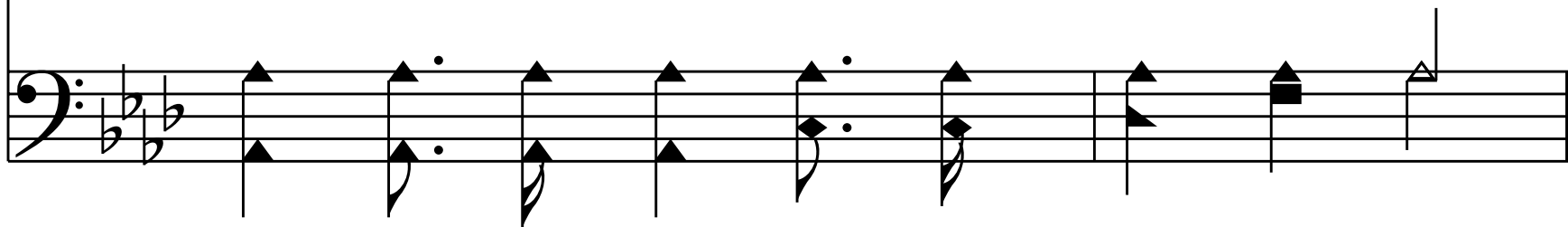


Down where for cleans-ing from sin I cried,

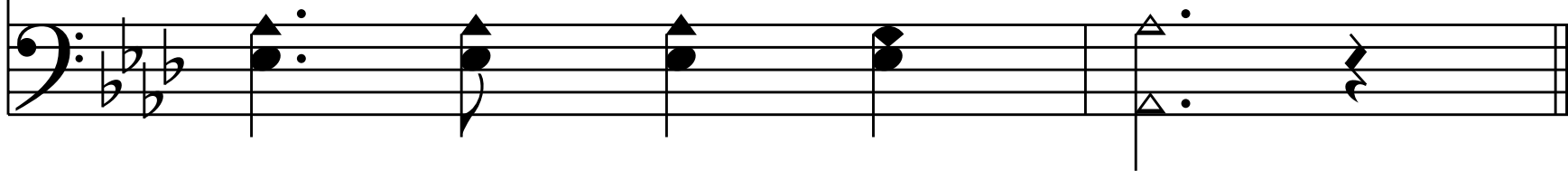




There to my heart was the blood ap - plied;



Glo - ry to His name.



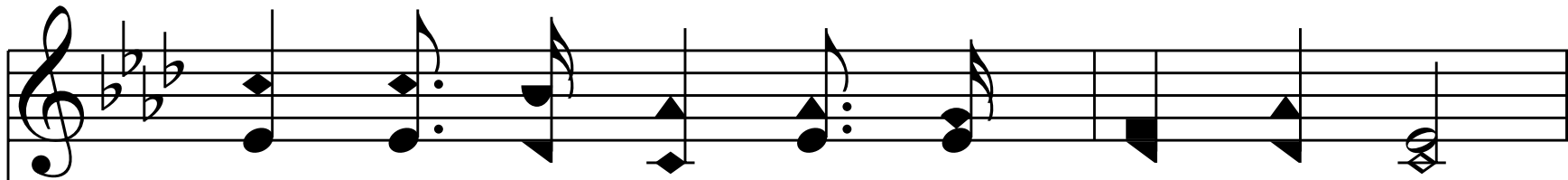
Chorus

Glo - ry to His name,

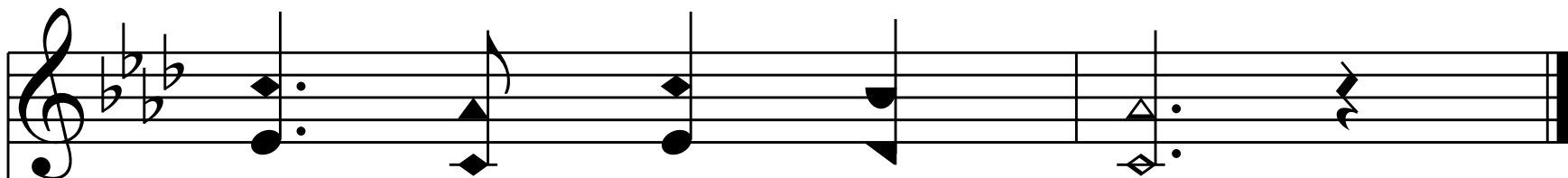
The first system of the chorus consists of two staves. The top staff is in treble clef with a key signature of three flats (B-flat, E-flat, A-flat) and a common time signature. It contains four measures of music. The first measure has a dotted quarter note on G4, a quarter note on F4, and a quarter note on E4. The second measure has a dotted quarter note on D4, a quarter note on C4, and a quarter note on B3. The third measure has a dotted quarter note on A3, a quarter note on G3, and a quarter note on F3. The fourth measure has a dotted quarter note on E3, a quarter note on D3, and a quarter note on C3. A slur covers the last three notes of the fourth measure. The bottom staff is in bass clef with the same key signature and time signature. It contains four measures of music. The first measure has a dotted quarter note on G2, a quarter note on F2, and a quarter note on E2. The second measure has a dotted quarter note on D2, a quarter note on C2, and a quarter note on B1. The third measure has a dotted quarter note on A1, a quarter note on G1, and a quarter note on F1. The fourth measure has a dotted quarter note on E1, a quarter note on D1, and a quarter note on C1. A slur covers the last three notes of the fourth measure.

Glo - ry to His name;

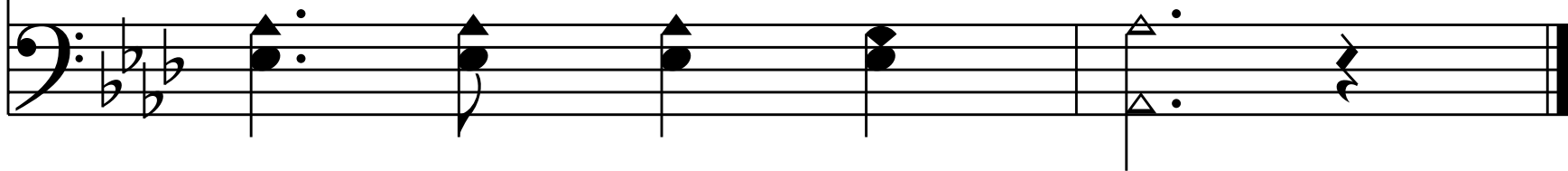
The second system of the chorus consists of two staves. The top staff is in treble clef with a key signature of three flats and a common time signature. It contains four measures of music. The first measure has a dotted quarter note on G4, a quarter note on F4, and a quarter note on E4. The second measure has a dotted quarter note on D4, a quarter note on C4, and a quarter note on B3. The third measure has a dotted quarter note on A3, a quarter note on G3, and a quarter note on F3. The fourth measure has a dotted quarter note on E3, a quarter note on D3, and a quarter note on C3. A slur covers the last three notes of the fourth measure. The bottom staff is in bass clef with the same key signature and time signature. It contains four measures of music. The first measure has a dotted quarter note on G2, a quarter note on F2, and a quarter note on E2. The second measure has a dotted quarter note on D2, a quarter note on C2, and a quarter note on B1. The third measure has a dotted quarter note on A1, a quarter note on G1, and a quarter note on F1. The fourth measure has a dotted quarter note on E1, a quarter note on D1, and a quarter note on C1. A slur covers the last three notes of the fourth measure.



There to my heart was the blood ap - plied;



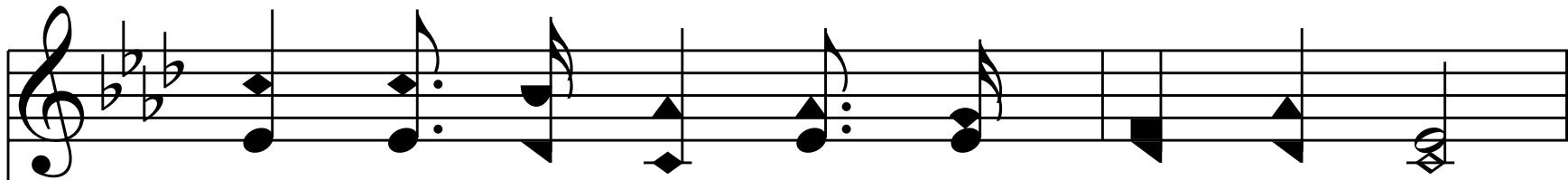
Glo - ry to His name.



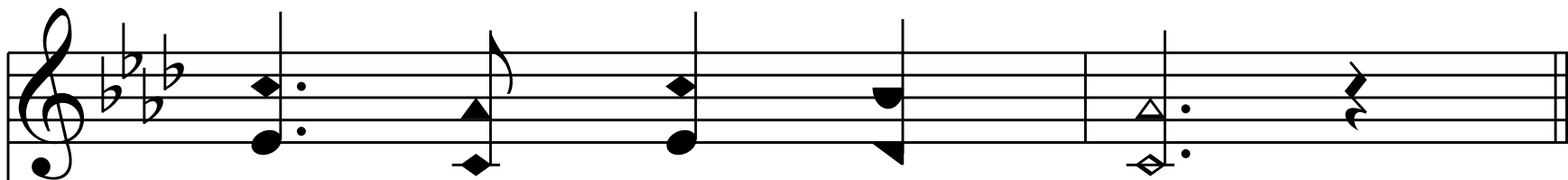
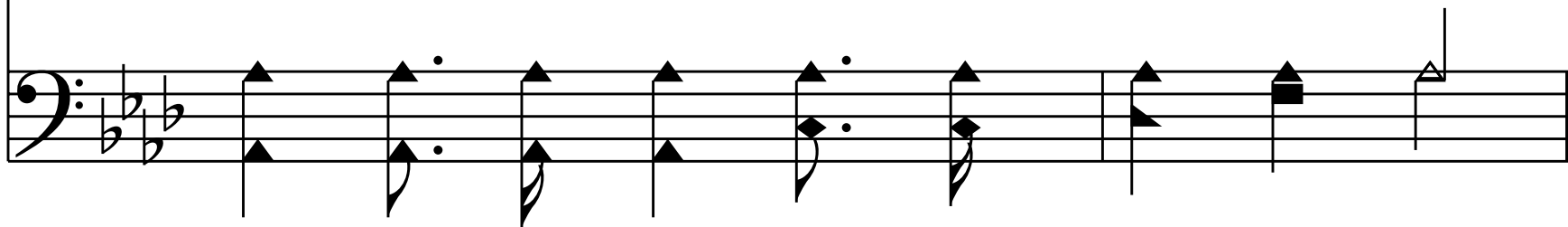
End of Verse 1

2. I am so won-drous-ly saved from sin,

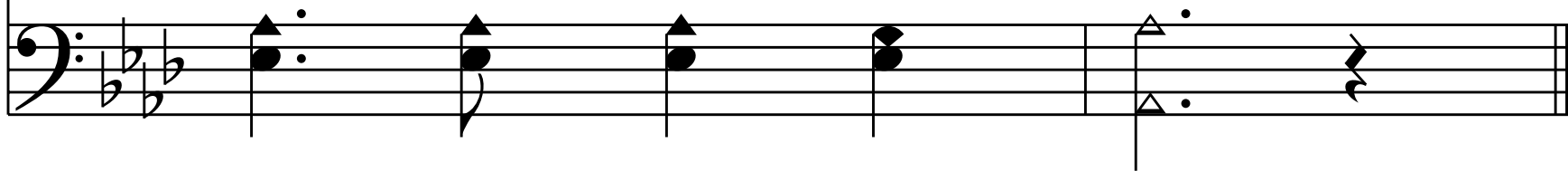
Je - sus so sweet-ly a - bides with - in,



There at the cross where He took me in;



Glo - ry to His name.



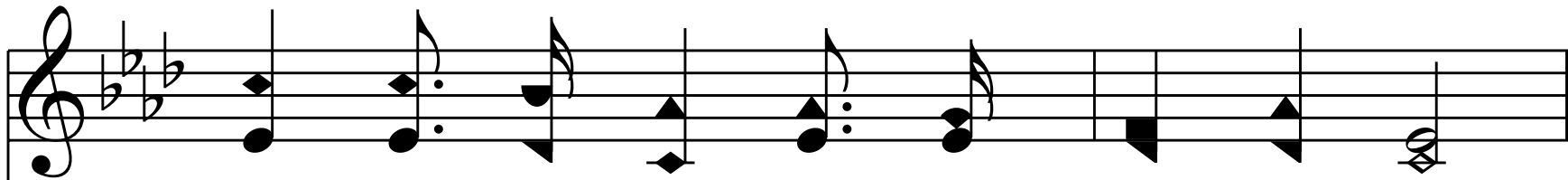
Chorus

Glo - ry to His name,

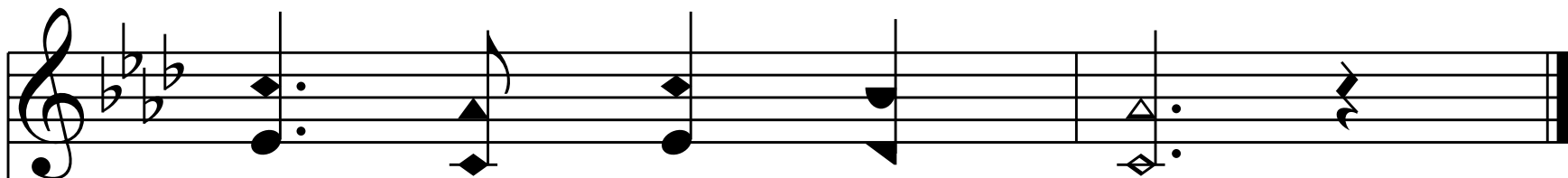
The first system of the chorus consists of two staves. The top staff is in treble clef with a key signature of three flats (B-flat, E-flat, A-flat) and a common time signature. It contains four measures of music: the first two measures are quarter notes (G4, A4), and the last two measures are quarter notes (B4, A4) beamed together under a slur. The bottom staff is in bass clef with the same key signature and time signature. It contains four measures of music: the first two measures are quarter notes (G3, A3), and the last two measures are quarter notes (B3, A3) beamed together under a slur.

Glo - ry to His name;

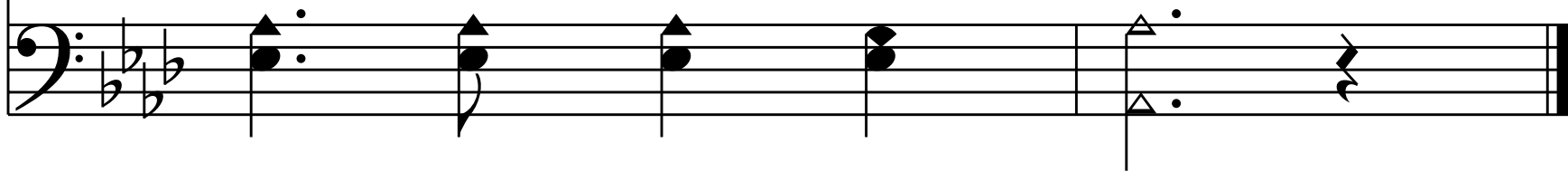
The second system of the chorus consists of two staves. The top staff is in treble clef with a key signature of three flats and a common time signature. It contains four measures of music: the first two measures are quarter notes (G4, A4), and the last two measures are quarter notes (B4, A4) beamed together under a slur. The bottom staff is in bass clef with the same key signature and time signature. It contains four measures of music: the first two measures are quarter notes (G3, A3), and the last two measures are quarter notes (B3, A3) beamed together under a slur.



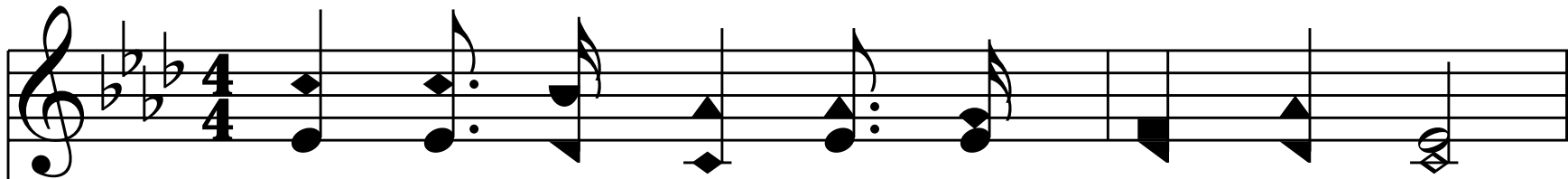
There to my heart was the blood ap - plied;




Glo - ry to His name.



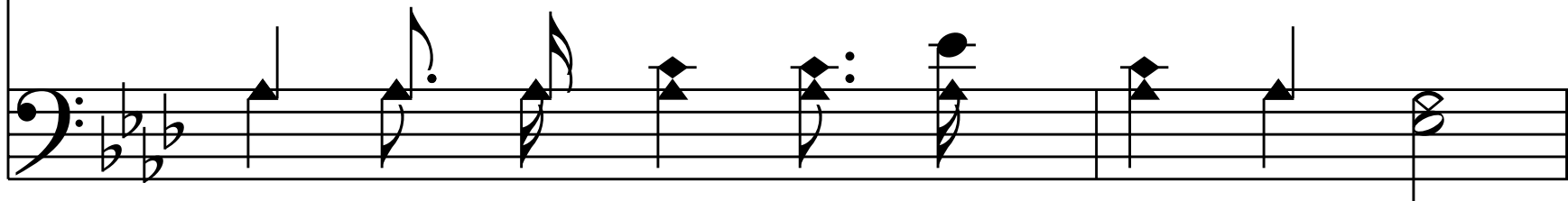
End of Verse 2

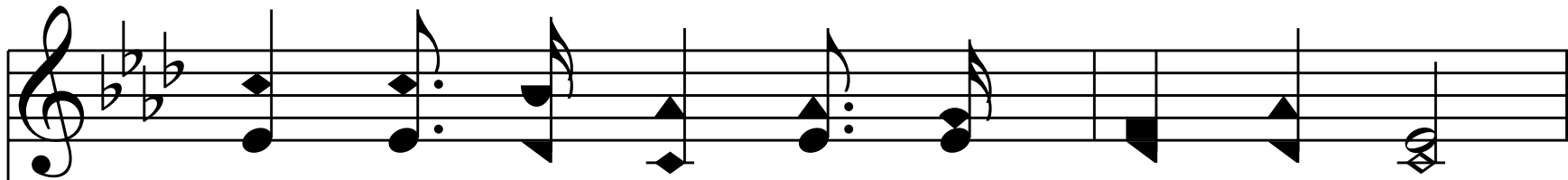


3. Oh, pre - cious foun - tain that saves from sin,

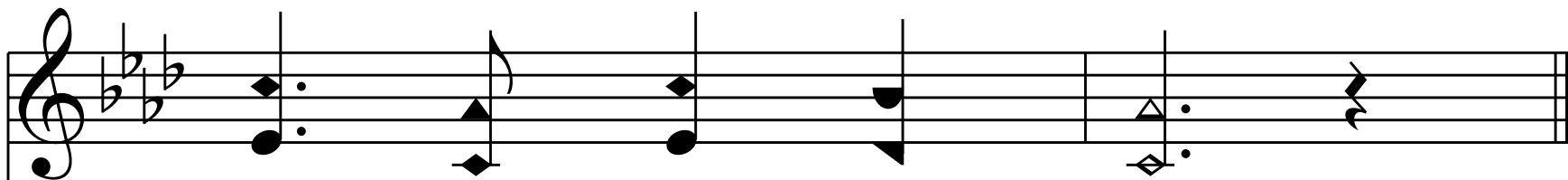


I am so glad I have en - tered in;

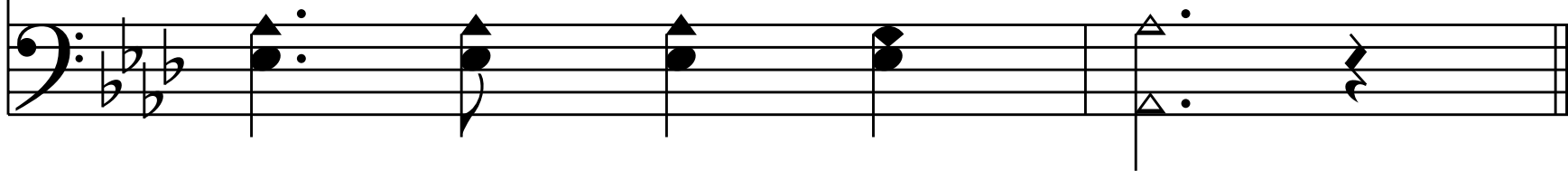




There Je - sus saves me and keeps me clean;



Glo - ry to His name.



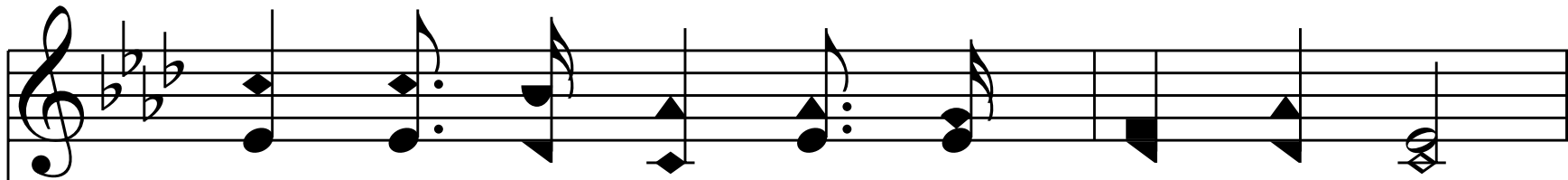
Chorus

Glo - ry to His name,

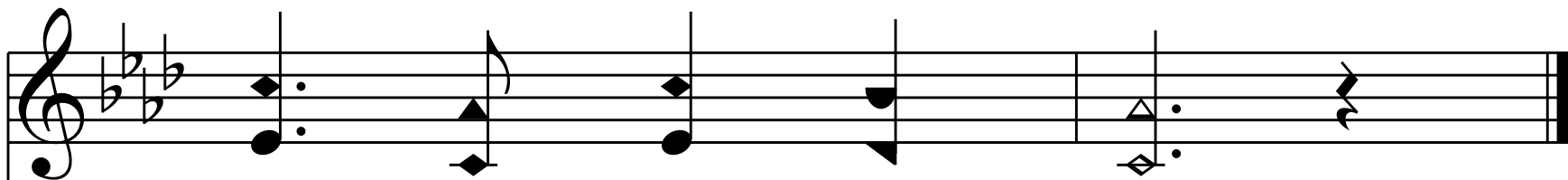
The first system of the chorus consists of two staves. The top staff is in treble clef with a key signature of three flats (B-flat, E-flat, A-flat) and a common time signature. It contains four measures of music: the first two measures are quarter notes (G4, A4), and the last two measures are quarter notes (B4, A4) with a slur over them. The bottom staff is in bass clef with the same key signature and time signature. It contains four measures of music: the first two measures are quarter notes (G3, A3), and the last two measures are quarter notes (B3, A3) with a slur over them. The lyrics 'Glo - ry to His name,' are centered between the two staves.

Glo - ry to His name;

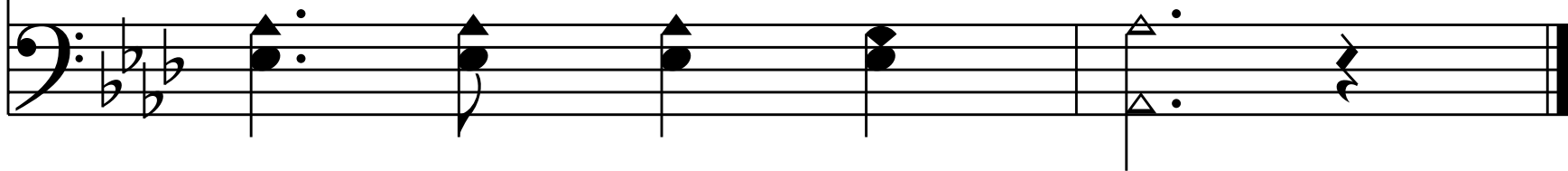
The second system of the chorus consists of two staves. The top staff is in treble clef with a key signature of three flats and a common time signature. It contains four measures of music: the first two measures are quarter notes (G4, A4), and the last two measures are quarter notes (B4, A4) with a slur over them. The bottom staff is in bass clef with the same key signature and time signature. It contains four measures of music: the first two measures are quarter notes (G3, A3), and the last two measures are quarter notes (B3, A3) with a slur over them. The lyrics 'Glo - ry to His name;' are centered between the two staves.



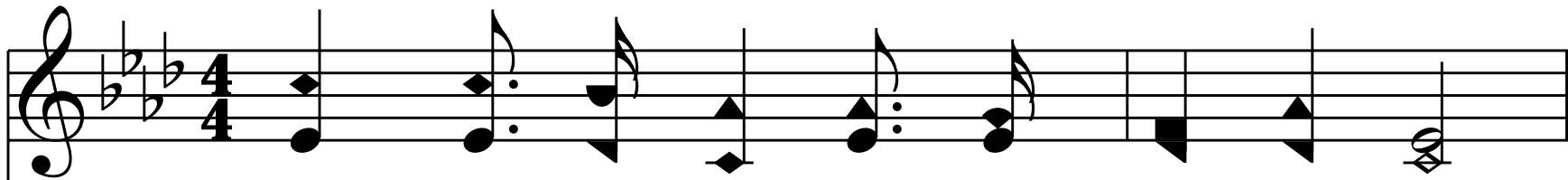
There to my heart was the blood ap - plied;



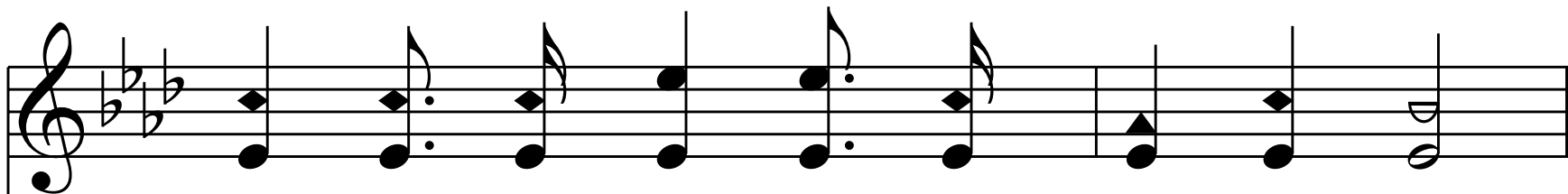
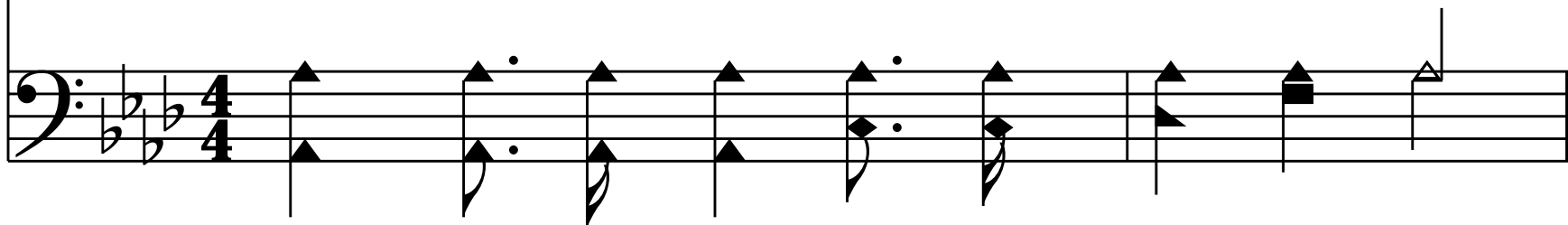
Glo - ry to His name.



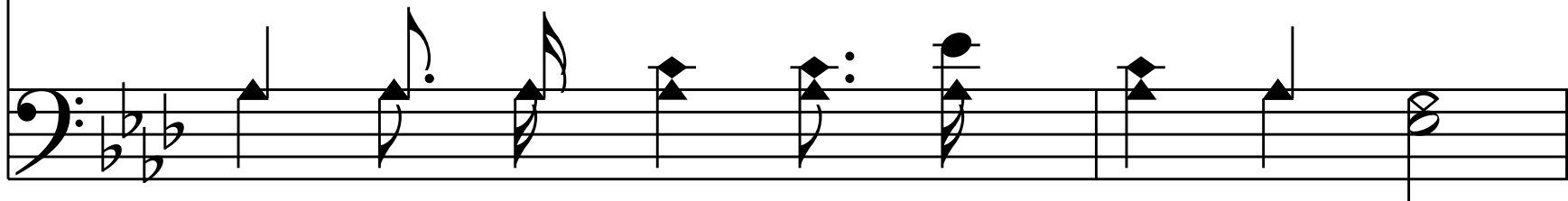
End of Verse 3

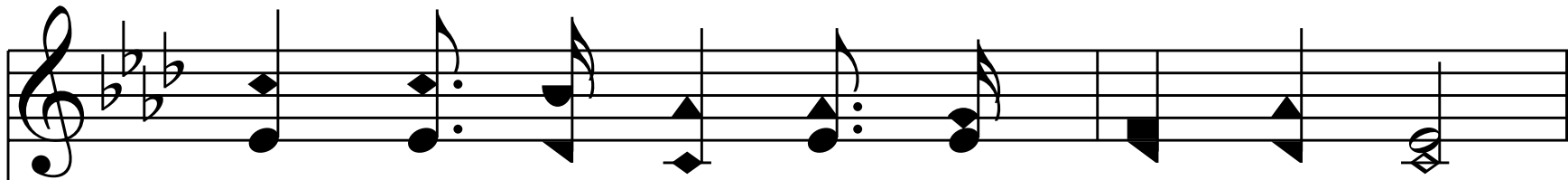


4. Come to this foun-tain so rich and sweet;

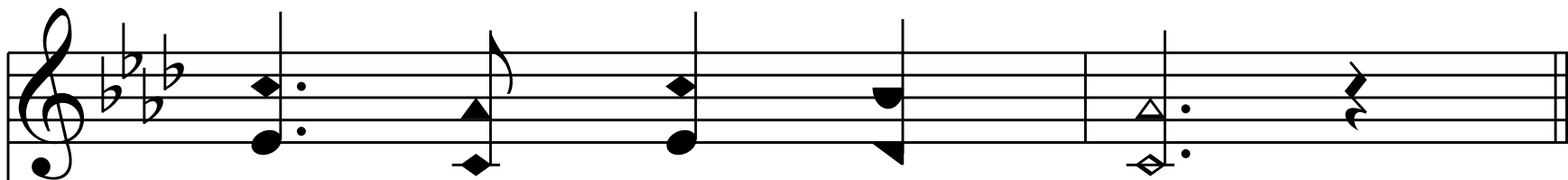
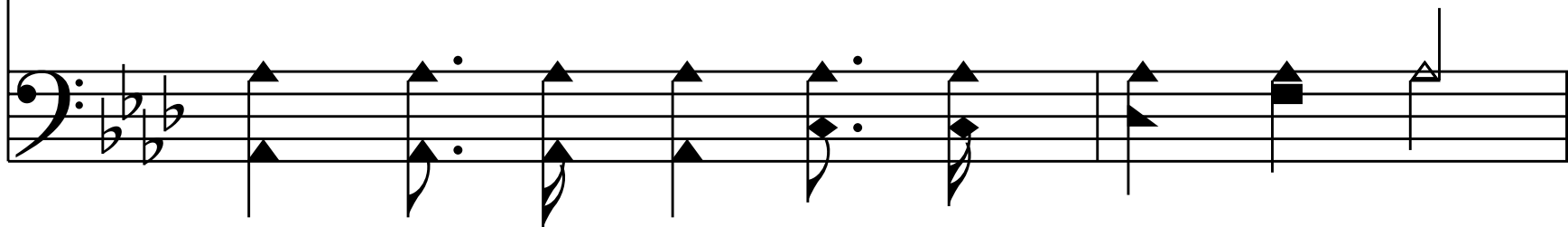


Cast thy poor soul at the Sav-ior's feet;

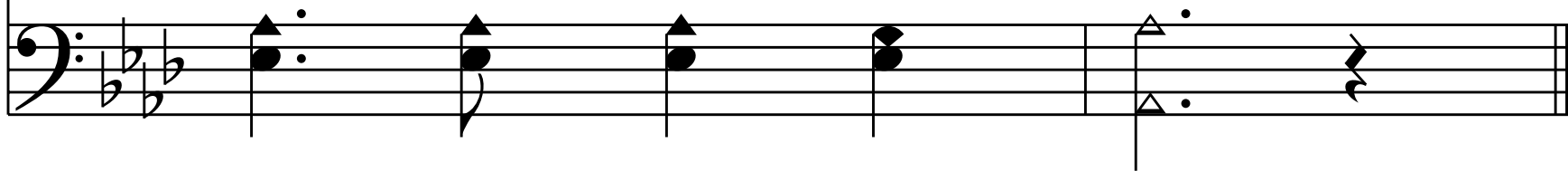




Plunge in to - day and be made com - plete;



Glo - ry to His name.



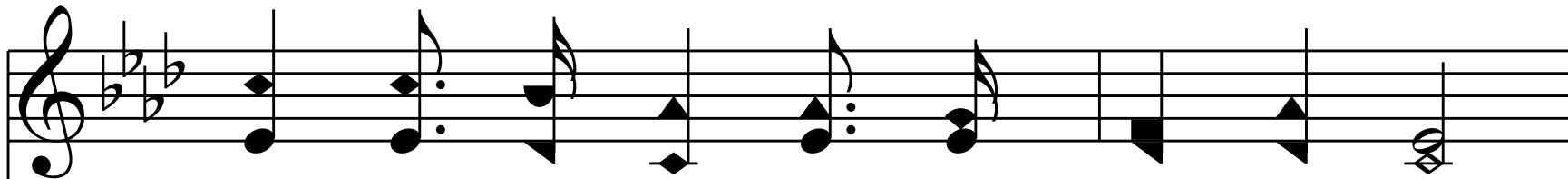
Chorus

Glo - ry to His name,

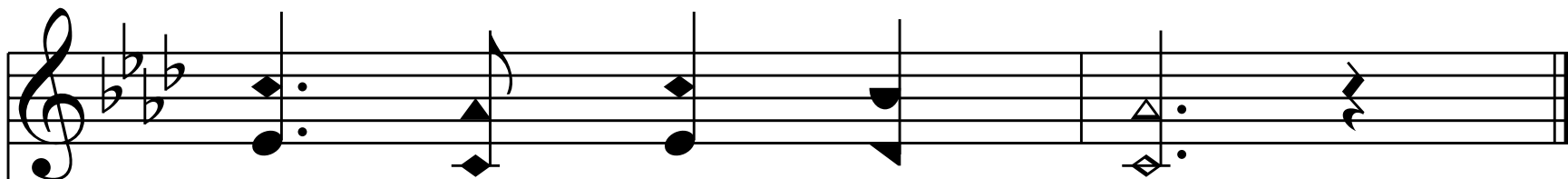
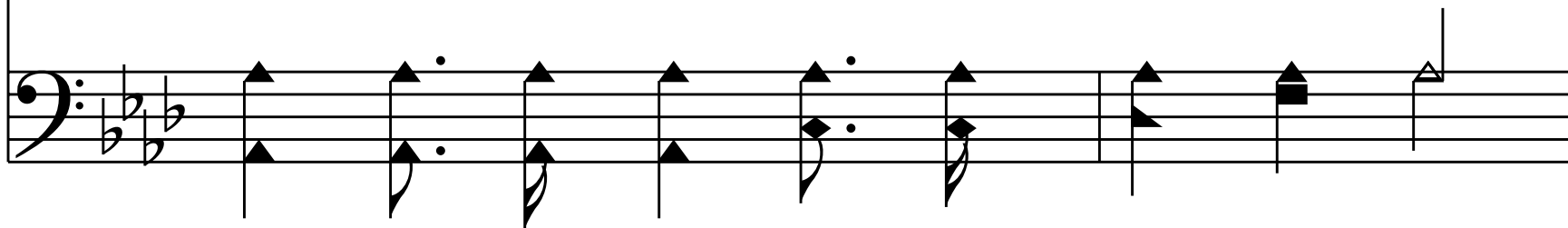
The first system of the chorus consists of two staves. The top staff is in treble clef with a key signature of three flats (B-flat, E-flat, A-flat) and a common time signature. It contains four measures of music. The first measure has a dotted quarter note on G4, a quarter note on F4, and a quarter note on E4. The second measure has a dotted quarter note on D4, a quarter note on C4, and a quarter note on B3. The third measure has a dotted quarter note on A3, a quarter note on G3, and a quarter note on F3. The fourth measure has a dotted quarter note on E3, a quarter note on D3, and a quarter note on C3, with a slur over the last two notes. The bottom staff is in bass clef with the same key signature and time signature. It contains four measures of music. The first measure has a dotted quarter note on G2, a quarter note on F2, and a quarter note on E2. The second measure has a dotted quarter note on D2, a quarter note on C2, and a quarter note on B1. The third measure has a dotted quarter note on A1, a quarter note on G1, and a quarter note on F1. The fourth measure has a dotted quarter note on E1, a quarter note on D1, and a quarter note on C1, with a slur over the last two notes.

Glo - ry to His name;

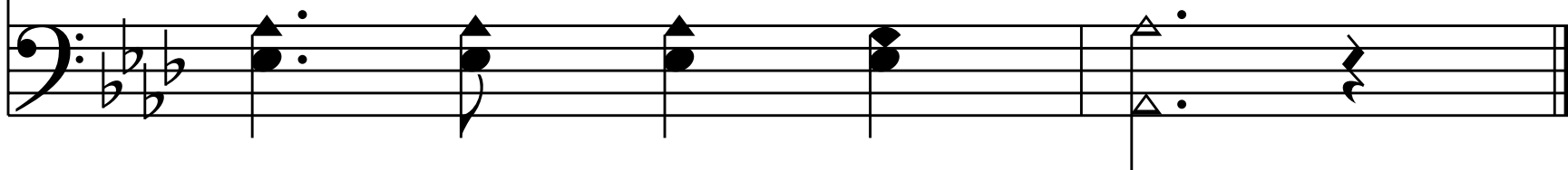
The second system of the chorus consists of two staves. The top staff is in treble clef with a key signature of three flats and a common time signature. It contains four measures of music. The first measure has a dotted quarter note on G4, a quarter note on F4, and a quarter note on E4. The second measure has a dotted quarter note on D4, a quarter note on C4, and a quarter note on B3. The third measure has a dotted quarter note on A3, a quarter note on G3, and a quarter note on F3. The fourth measure has a dotted quarter note on E3, a quarter note on D3, and a quarter note on C3, with a slur over the last two notes. The bottom staff is in bass clef with the same key signature and time signature. It contains four measures of music. The first measure has a dotted quarter note on G2, a quarter note on F2, and a quarter note on E2. The second measure has a dotted quarter note on D2, a quarter note on C2, and a quarter note on B1. The third measure has a dotted quarter note on A1, a quarter note on G1, and a quarter note on F1. The fourth measure has a dotted quarter note on E1, a quarter note on D1, and a quarter note on C1, with a slur over the last two notes.



There to my heart was the blood ap - plied;



Glo - ry to His name.



End of Hymn