

Cut It Down

Cut it down, why cumbereth it the ground? - Luke 13:7

E ♭ - 4 - MI
P. P. Bliss

P. P. Bliss

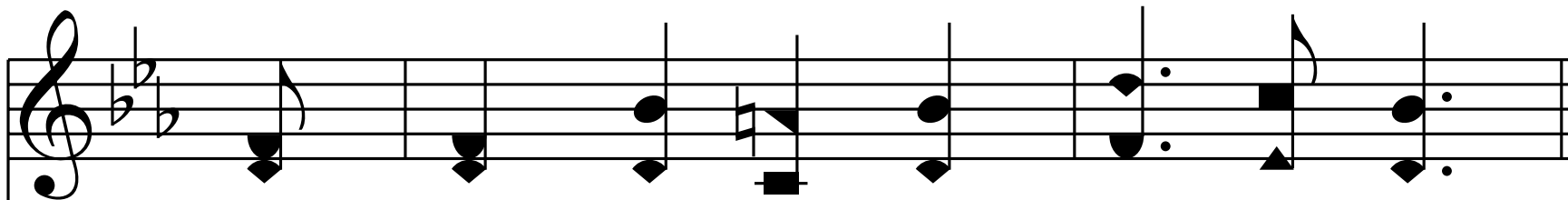
Public Domain

HymnsToGod.org

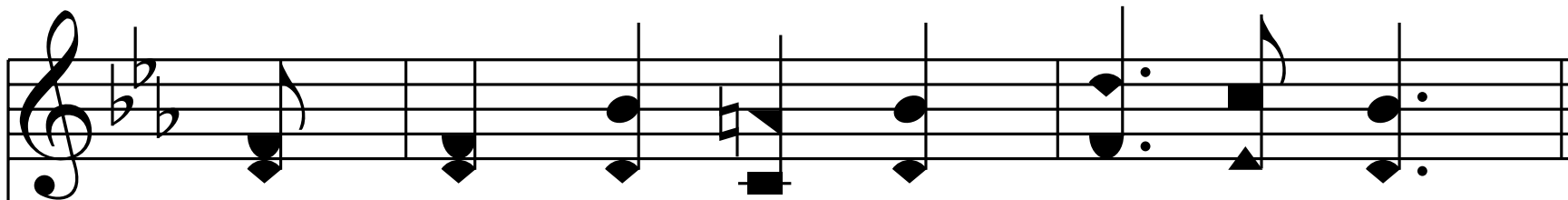
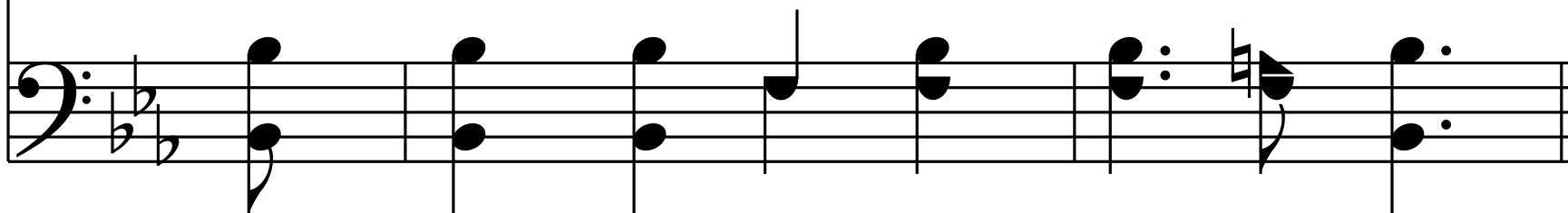
Slow

(Justice) 1. Cut it down, cut it down,

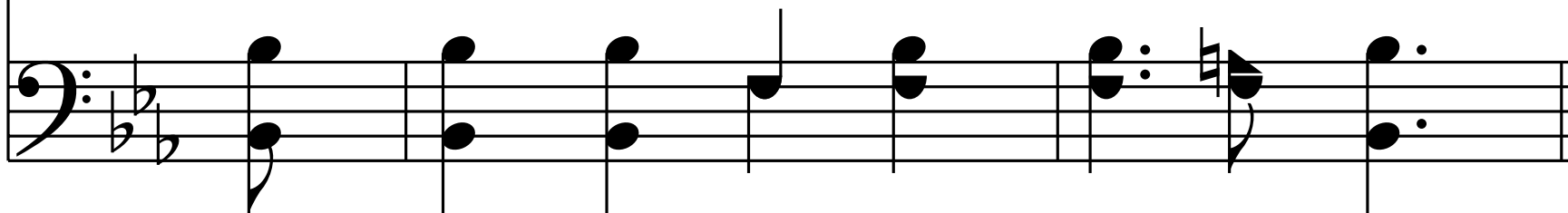
Spare not the fruit-less tree!



It spreads a harm - ful shade a - round,



It spoils what else were use - ful ground,



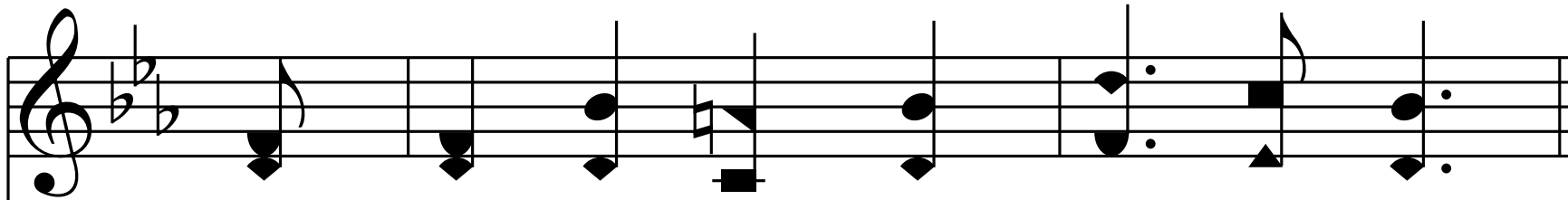
No fruit for years on it I've found,

Cut it down, cut it down.

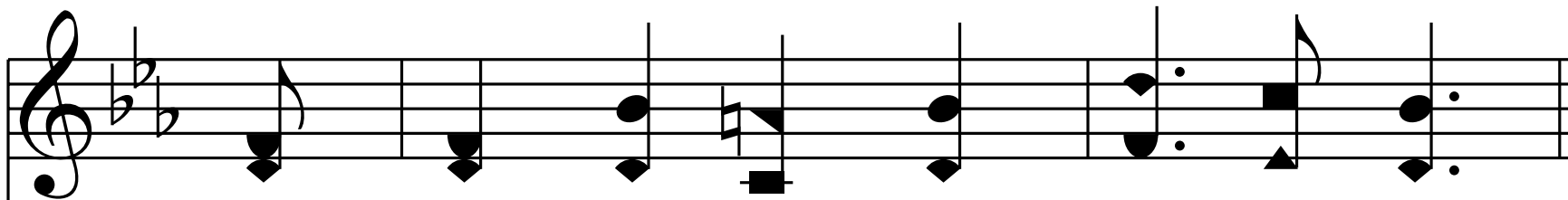
End of Verse 1

(Mercy) 2. One year more, one year more,

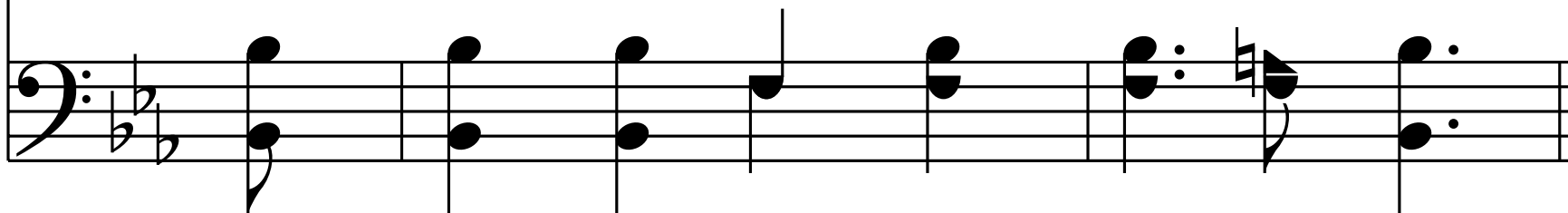
Oh spare the fruit-less tree!



Be - hold its branch-es broad and green,



Its spread-ing leaves have hope-ful been,



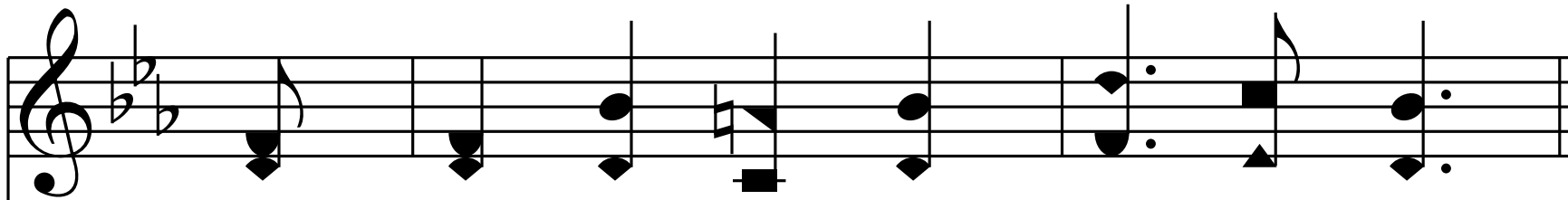
Some fruit there - on may yet be seen,

One year more, one year more.

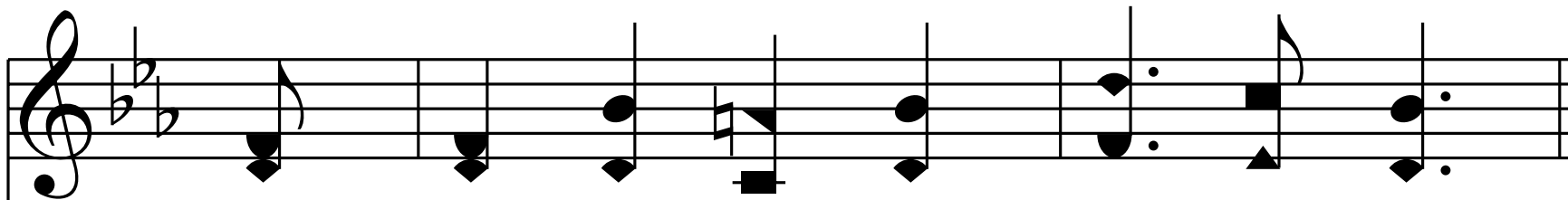
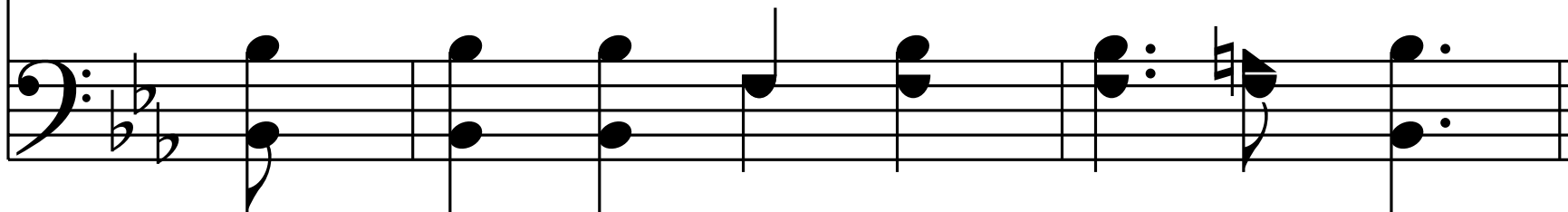
End of Verse 2

(Justice) 3. Cut it down, cut it down,

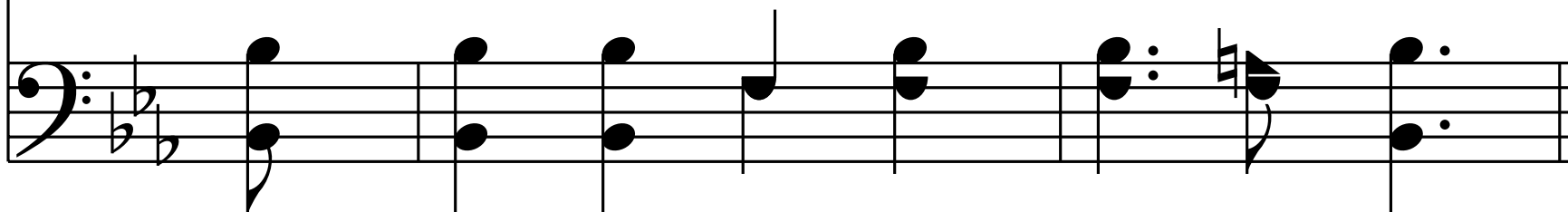
And burn the worth-less tree!



For oth - er use the soil pre - pare,



Some oth - er tree will flour - ish there,



And in my vine-yard much fruit bear,

Cut it down, cut it down.

End of Verse 3

Musical notation for the first system, treble clef, 4/4 time signature, key signature of two flats. The melody consists of a series of chords: G4, F4, E4, D4, C4, B3, A3, G3, F3, E3, D3, C3. The piece ends with a repeat sign.

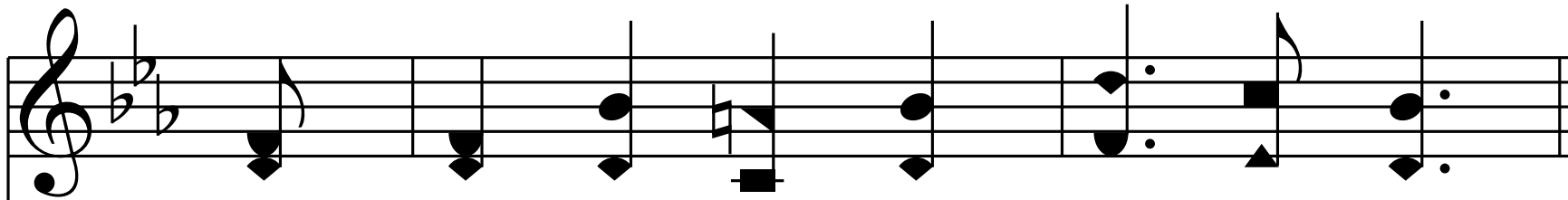
(Mercy) 4. One year more, one year more,

Musical notation for the first system, bass clef, 4/4 time signature, key signature of two flats. The bass line consists of a series of chords: G3, F3, E3, D3, C3, B2, A2, G2, F2, E2, D2, C2. The piece ends with a repeat sign.

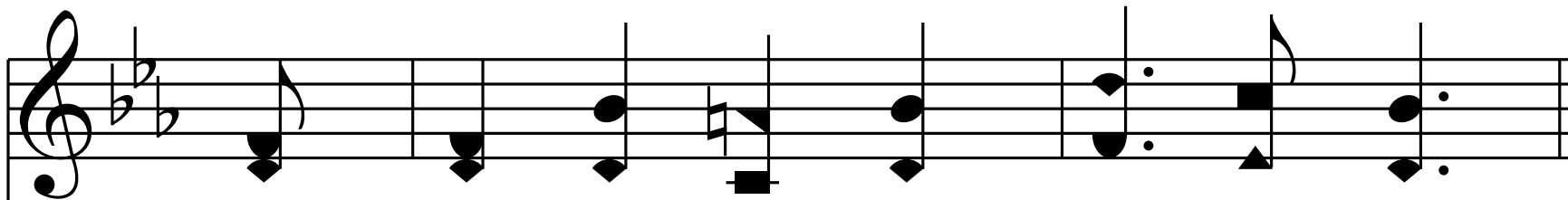
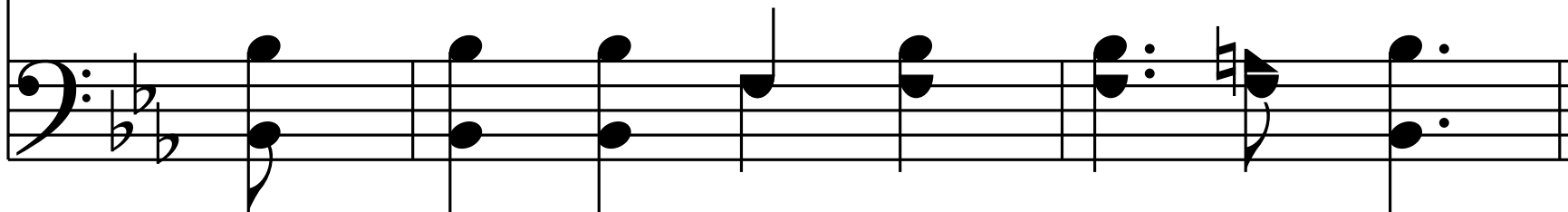
Musical notation for the second system, treble clef, 4/4 time signature, key signature of two flats. The melody consists of a series of chords: G4, F4, E4, D4, C4, B3, A3, G3, F3, E3, D3, C3. The piece ends with a repeat sign.

For mer - cy spare the tree!

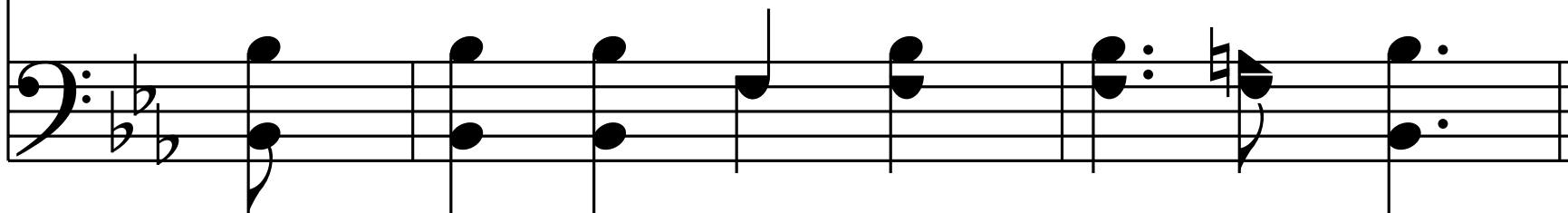
Musical notation for the second system, bass clef, 4/4 time signature, key signature of two flats. The bass line consists of a series of chords: G3, F3, E3, D3, C3, B2, A2, G2, F2, E2, D2, C2. The piece ends with a repeat sign.



An - oth - er year of care be - stow,



On its fair form some fruit may grow,



If not— then lay the cumb'-er low,

One year more, one year more.

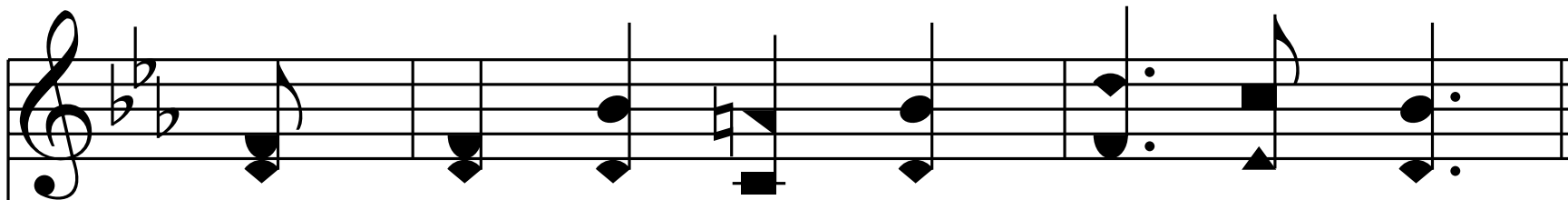
End of Verse 4

5. Still it stands, still it stands,

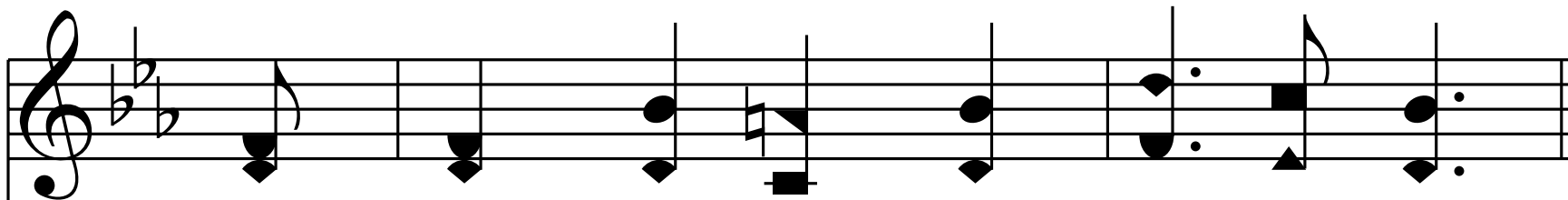
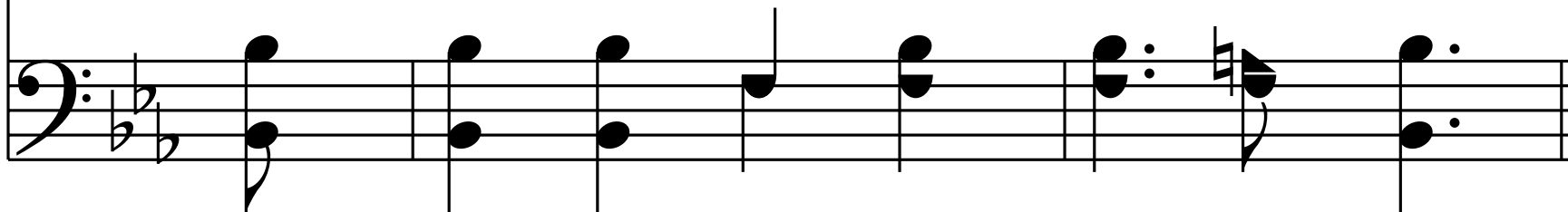
A fair, but fruit - less tree!

A fair, but fruit - less tree!

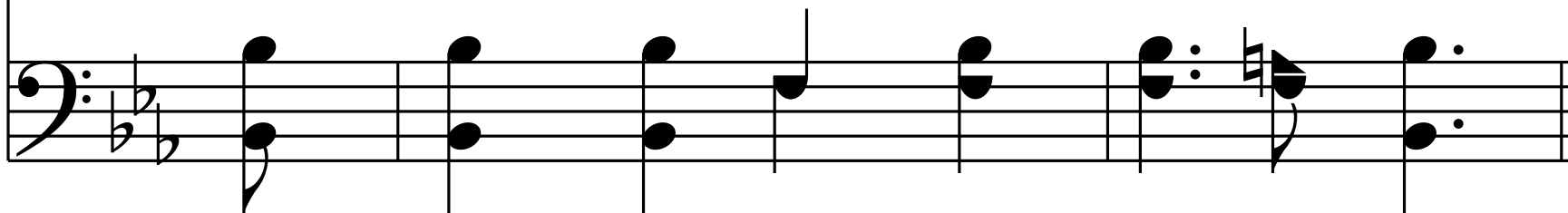
A fair, but fruit - less tree!



The Mas - ter, seek - ing fruit there - on



Has come — but griev'd at find - ing none,



Now speaks to Jus - tice — Mer - cy flown —

Cut it down, cut it down.

End of Hymn