

# Where The Saviour Leads

*I will follow thee whithersoever thou goest - Matt. 8:19*

E♭ - 4 - MI

Fanny J. Crosby

Ira D. Sankey, 1895



1. If in the val - ley where the bright wa - ters flow,  
2. Out on the bar - ren moun - tains drear - y and cold,  
3. Wher - e'er the Sav - iour leads me, I'll fol - low still,



Je - sus, my Sav - iour leads me, glad - ly I'll go;  
Seek - ing the sheep that wan - der far from the fold;  
Pa - tient in joy or sor - row, bid - ing His will;



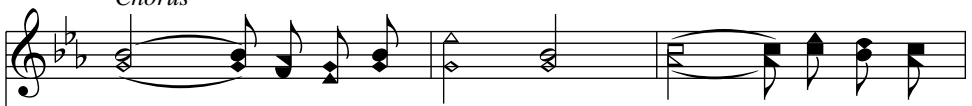
If, by His hands dir - ect - ed o'er o - cean's wave,  
Storm-clouds may frown a - bove me, fierce winds may blow,  
He knows the path of safe - ty, He knows the way,



Glad - ly I'll bear his mes - sage, lost ones to save.  
Yet if my Sav - iour leads me, on - ward I'll go.  
Home to the ma - ny man - sions, bright, bright as day.



## Chorus



Where \_\_\_\_\_ the Sav - iour leads me, I \_\_\_\_\_ will glad - ly  
Where the lov - ing Sav - iour leads me, I will glad - ly



fol - low, Where the lov-ing Sav-iour leads me, I will glad-ly go.  
glad-ly fol-low,

The image shows a musical score for a hymn. It consists of two staves: a vocal line in the treble clef and a piano accompaniment in the bass clef. The key signature has two flats (B-flat and E-flat), and the time signature is 4/4. The vocal line begins with the lyrics 'fol - low, Where the lov-ing Sav-iour leads me, I will glad-ly go.' The piano accompaniment features a steady bass line with eighth notes and chords. The lyrics 'glad-ly fol-low,' are positioned below the first four measures of the piano part.