


# Peace In Jesus

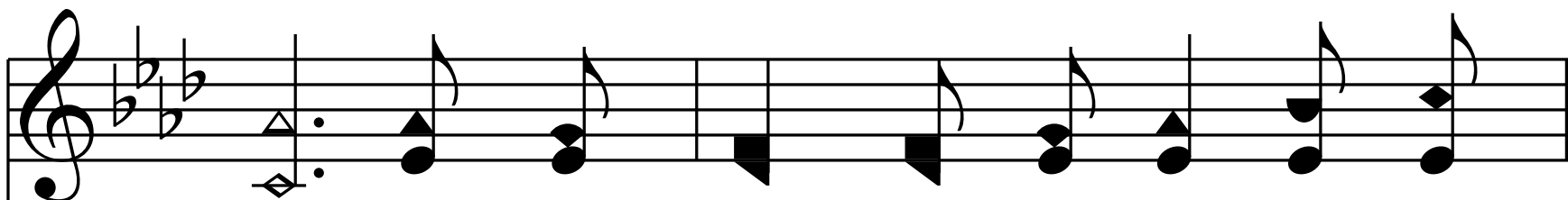
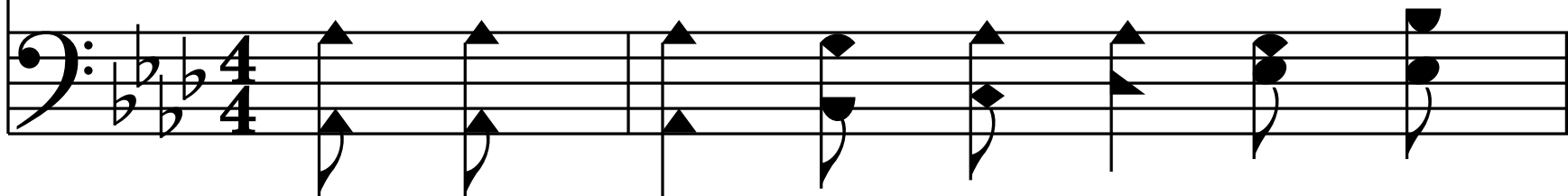
*My peace I give unto you. - Jn. 14:27*

A  $\flat$  - 4 - DO  
A. Kenyon

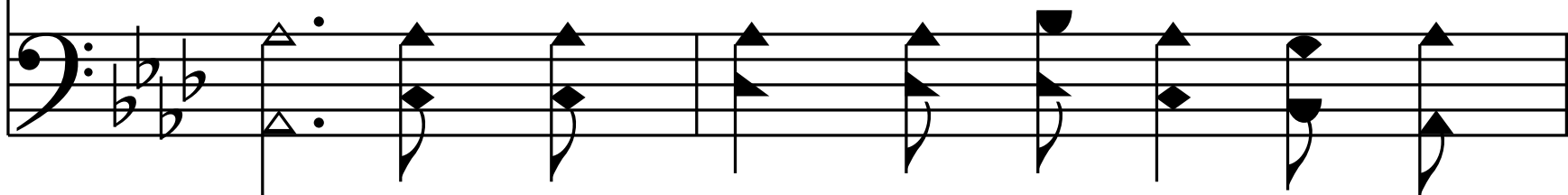
Robert Lowry, 1877

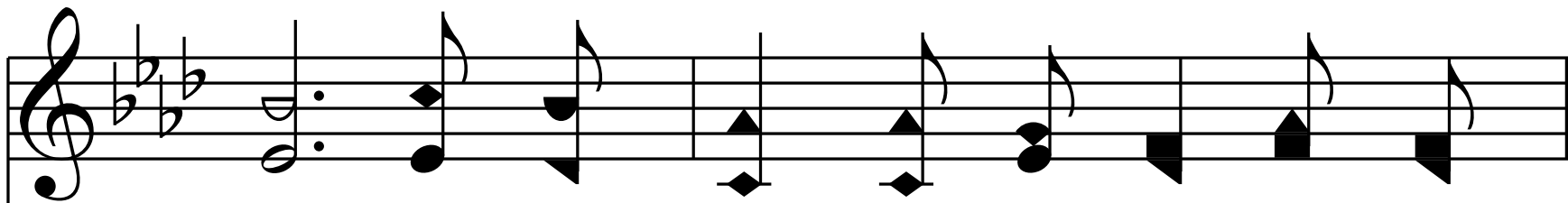


1. O the peace that in Je - sus I

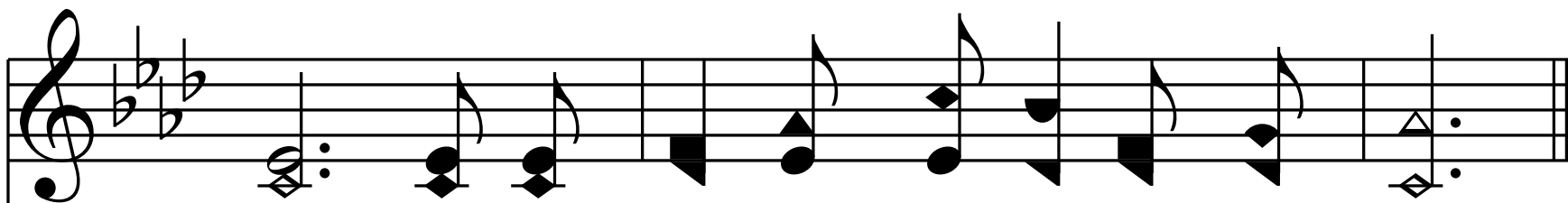
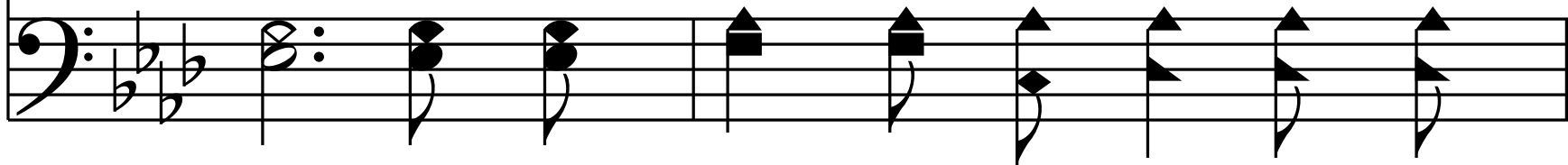


find! How it cheers me a - mid all my

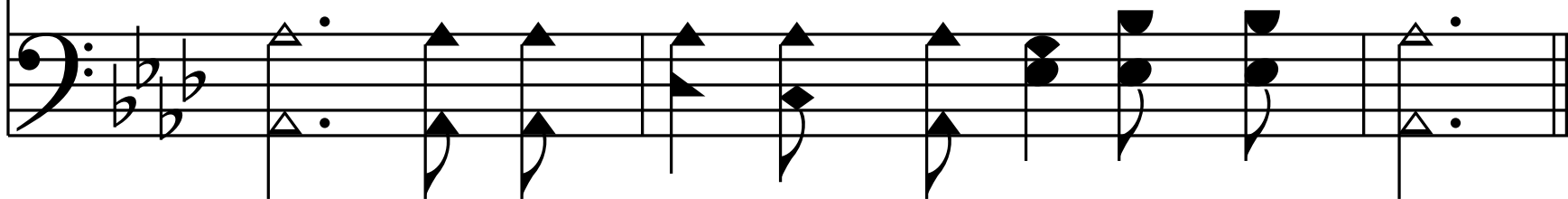




care; It is sweet to the sor - row - ing



mind, In this pre-cious sal-va-tion to share.



*Refrain*

*m*

O the peace, O the peace That my  
sweet peace, sweet peace

The first system of the refrain consists of two staves. The treble staff begins with a treble clef, a key signature of three flats (B-flat, E-flat, A-flat), and a common time signature. The melody starts with a quarter rest, followed by a quarter note G4, a quarter note A4, a quarter note B-flat4, and a quarter note C5. This is followed by a half note G4 with a repeat sign. The melody then continues with a quarter note A4, a quarter note B-flat4, a quarter note C5, and a quarter note B-flat4. The bass staff begins with a bass clef and the same key signature and time signature. It starts with a quarter rest, followed by a quarter note G3, a quarter note A3, a quarter note B-flat3, and a quarter note C4. This is followed by a half note G3 with a repeat sign. The bass staff then continues with a quarter note A3, a quarter note B-flat3, a quarter note C4, and a quarter note B-flat3.

*p*

Sav - iour has giv - en to me! O the  
Sweet peace,

The second system of the refrain consists of two staves. The treble staff begins with a treble clef, a key signature of three flats, and a common time signature. The melody starts with a quarter note G4, a quarter note A4, a quarter note B-flat4, and a quarter note C5. This is followed by a half note G4 with a repeat sign. The melody then continues with a quarter note A4, a quarter note B-flat4, a quarter note C5, and a quarter note B-flat4. The bass staff begins with a bass clef and the same key signature and time signature. It starts with a quarter note G3, a quarter note A3, a quarter note B-flat3, and a quarter note C4. This is followed by a half note G3 with a repeat sign. The bass staff then continues with a quarter note A3, a quarter note B-flat3, a quarter note C4, and a quarter note B-flat3.

peace, O the peace That my  
sweet peace, sweet peace,

*pp* *m*

Sav - iour has giv - en to me!

2. Yes, I know that my Sav - iour is

mine, That He nev - er will leave me to

die; Tho' in weak-ness I of - ten re -

pine, He will fill all my soul by and by.

*Refrain*

*m*

O the peace, O the peace That my  
sweet peace, sweet peace

The first system of the refrain consists of two staves. The treble staff begins with a treble clef, a key signature of three flats (B-flat, E-flat, A-flat), and a common time signature. The melody starts with a quarter note G4, followed by a quarter note A4, a quarter note B-flat4, and a quarter note C5. This is followed by a half note G4 with a repeat sign. The melody continues with a quarter note A4, a quarter note B-flat4, a quarter note C5, and a quarter note B-flat4. The system concludes with a quarter note G4, a quarter note A4, and a quarter note B-flat4. The bass staff begins with a bass clef and the same key signature and time signature. It provides a harmonic accompaniment with a steady eighth-note bass line and chords. The lyrics are positioned between the two staves.

*p*

Sav - iour has giv - en to me! O the  
Sweet peace,

The second system of the refrain continues with two staves. The treble staff starts with a treble clef, the same key signature, and a common time signature. The melody begins with a quarter note G4, followed by a quarter note A4, a quarter note B-flat4, a quarter note C5, a quarter note B-flat4, and a quarter note A4. This is followed by a half note G4 with a repeat sign. The melody ends with a quarter note A4, a quarter note B-flat4, and a quarter note C5. The bass staff continues with a bass clef and the same key signature and time signature, providing harmonic support. The lyrics are placed between the staves.



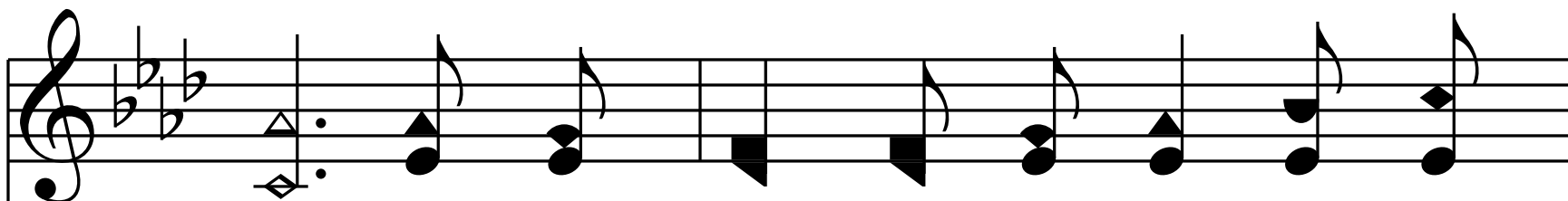
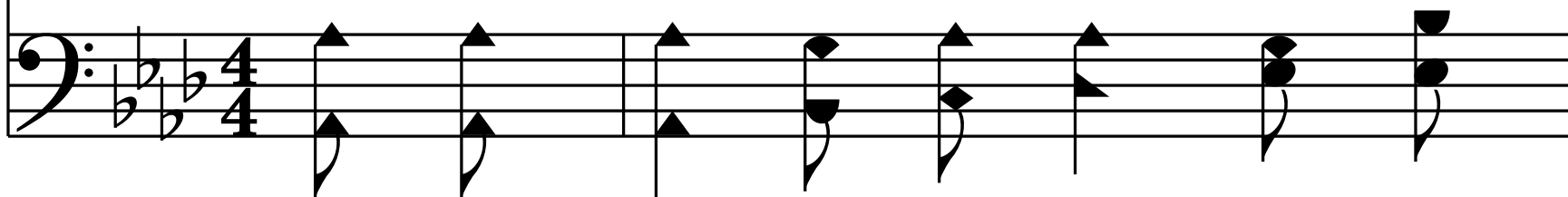
peace, O the peace That my  
sweet peace, sweet peace,

*pp* *m*

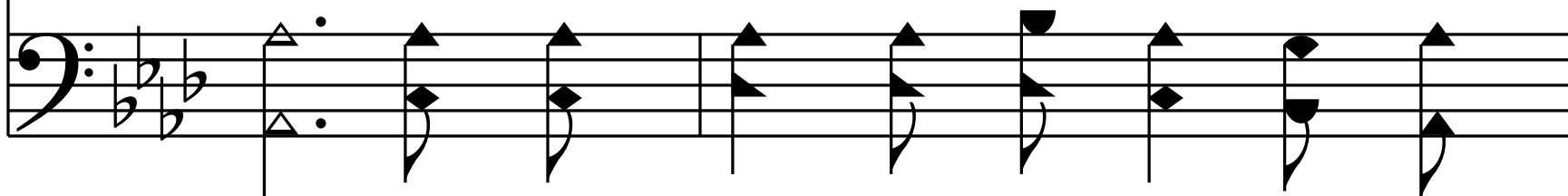
Sav - iour has giv - en to me!

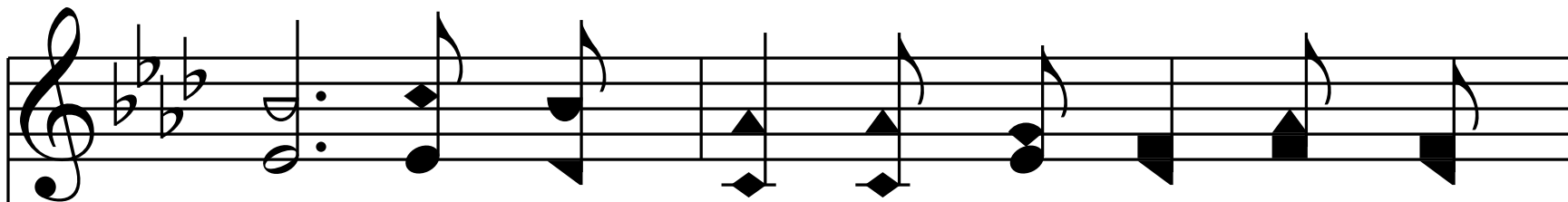


3. By His Spir - it He dwells with me

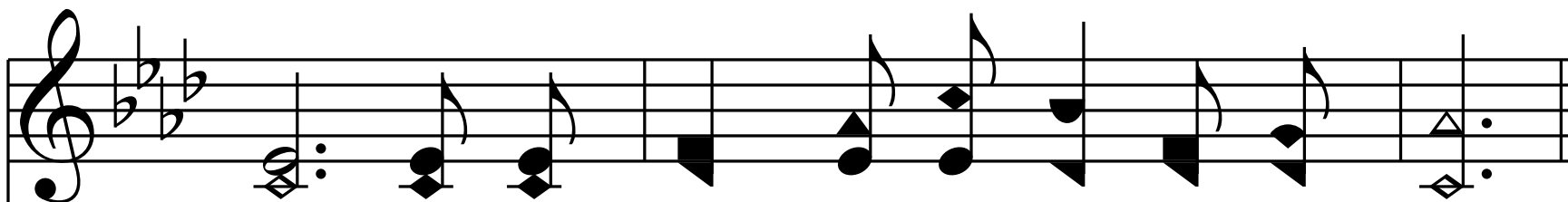
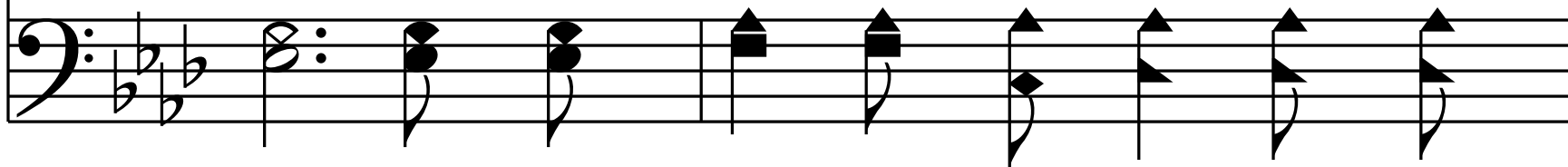


now, And His voice is so gen - tle and

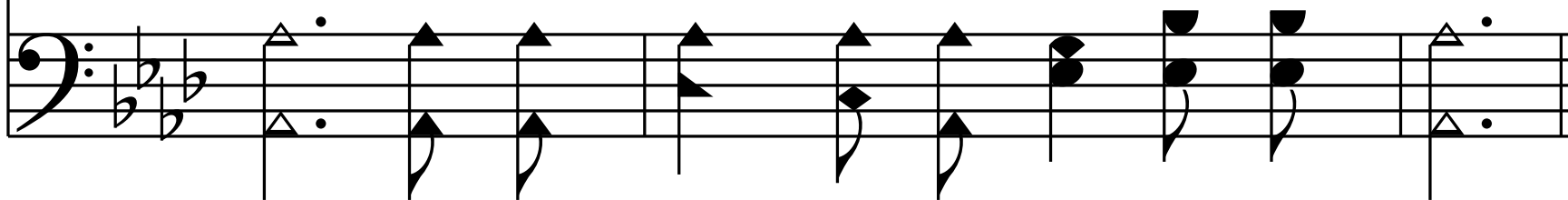




still; As be - fore Him in wor - ship I



bow, It is sweet to sub - mit to His will.



*Refrain*

*m*

O the peace, O the peace That my  
sweet peace, sweet peace

*p*

Sav - iour has giv - en to me! O the  
Sweet peace,

peace, O the peace That my  
sweet peace, sweet peace,

*pp* *m*

Sav - iour has giv - en to me!

4. Then still near - er to Him may I

live; More and more of His love, is my

prayer; Eve - ry bless - ing I need will He

give, And re - ceive me at home o - ver there.

*Refrain*

*m*

O the peace, O the peace That my  
sweet peace, sweet peace

The first system of the refrain consists of two staves. The treble staff begins with a treble clef, a key signature of three flats (B-flat, E-flat, A-flat), and a common time signature. The melody starts with a quarter note G4, followed by a quarter note A4, a quarter note B-flat4, and a quarter note C5. This is followed by a half note G4 with a repeat sign. The melody continues with a quarter note A4, a quarter note B-flat4, a quarter note C5, and a quarter note B-flat4. The system concludes with a quarter note G4, a quarter note A4, and a quarter note B-flat4. The bass staff begins with a bass clef and the same key signature and time signature. It provides a harmonic accompaniment with chords and moving lines. The lyrics are placed between the two staves.

*p*

Sav - iour has giv - en to me! O the  
Sweet peace,

The second system of the refrain continues with two staves. The treble staff starts with a treble clef, the same key signature, and a common time signature. The melody begins with a quarter note G4, followed by a quarter note A4, a quarter note B-flat4, and a quarter note C5. This is followed by a half note G4 with a repeat sign. The melody continues with a quarter note A4, a quarter note B-flat4, a quarter note C5, and a quarter note B-flat4. The system concludes with a quarter note G4, a quarter note A4, and a quarter note B-flat4. The bass staff begins with a bass clef and the same key signature and time signature. It provides a harmonic accompaniment with chords and moving lines. The lyrics are placed between the two staves.



peace, O the peace That my  
sweet peace, sweet peace,

*pp* *m*

Detailed description: This system contains two staves of music. The upper staff is in treble clef with a key signature of three flats (B-flat, E-flat, A-flat). It begins with a dotted half note on G4, followed by quarter notes on A4 and B-flat4. A long note on C5 spans the next two measures, marked *pp*. The final measure has a quarter note on B-flat4, a quarter note on A4, and a half note on G4, marked *m*. The lower staff is in bass clef with the same key signature. It starts with a dotted half note on G2, followed by quarter notes on A2 and B-flat2. The next two measures feature a half note on C3 with a tremolo effect. The final measure has quarter notes on B-flat2 and A2, and a half note on G2.

Sav - iour has giv - en to me!

— End —

Detailed description: This system continues the two-staff musical score. The upper staff (treble clef) has quarter notes on G4, A4, B-flat4, and A4, followed by a dotted half note on G4. The lower staff (bass clef) has quarter notes on G2, A2, B-flat2, and A2, followed by a dotted half note on G2. The system concludes with a double bar line.