

He Leadeth Me

...I am Jehovah thy God, who teacheth thee to profit, who leadeth thee by the way that thou shouldest go. - Is. 48:17

D - 4 - SOL

Joseph H. Gilmore, 1861

William B. Bradbury, 1864

Public Domain

HymnsToGod.org

1. He lead-eth me! O, bless-ed thought,

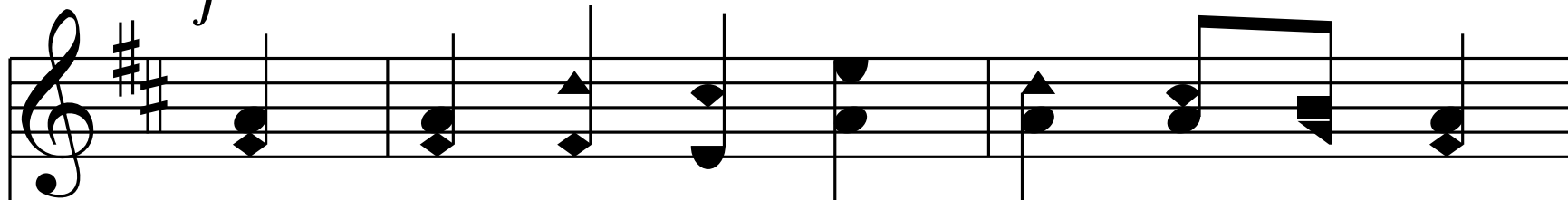
O words with heav-en - ly com-fort fraught

What - e'er I do, where - e'er I be,

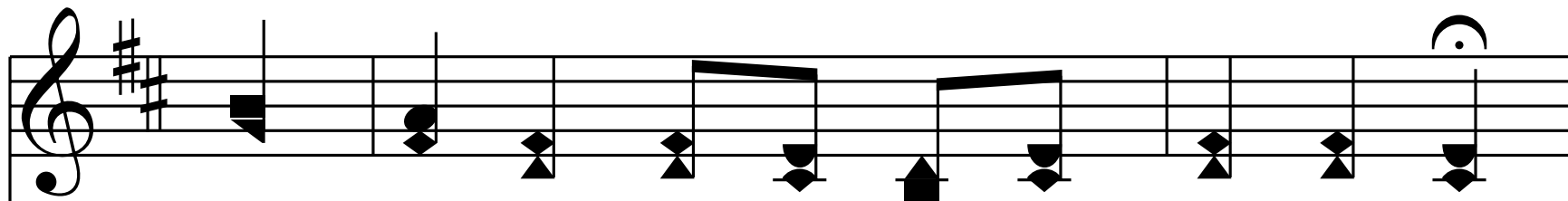
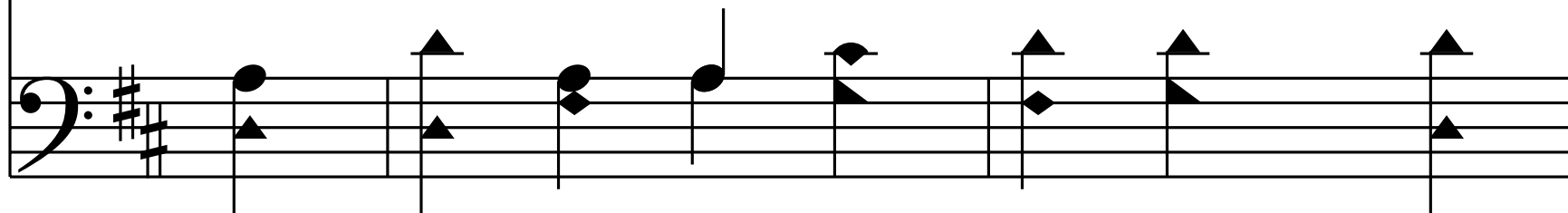
Still tis God's hand that lead-eth me.

Refrain

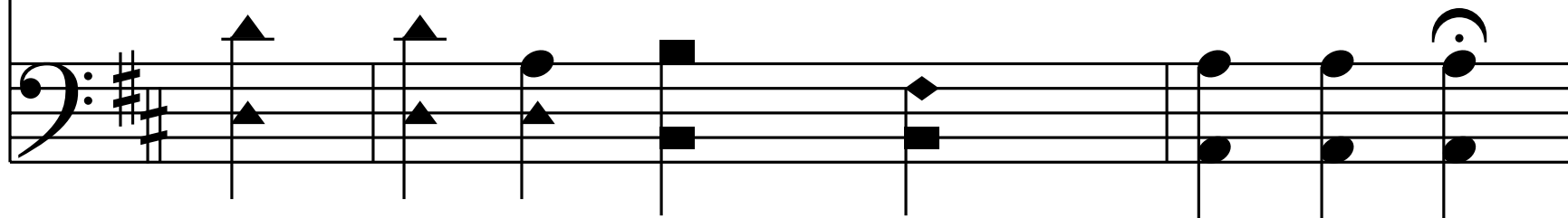
f



He lead - eth me! He lead - eth me!



By his own hand he lead-eth me;



His faith-ful fol-lw'r I would be,

His faith-ful fol-lw'r I would be,

For by his hand he lead-eth me.

For by his hand he lead-eth me.

For by his hand he lead-eth me.

End of Verse 1

End of Verse 1

2. Some -times 'mid scenes of deep-est gloom,

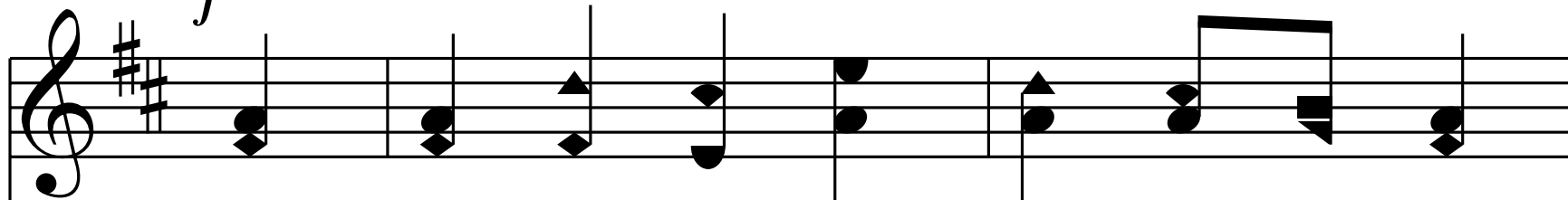
Some -times where E - den's bow-ers bloom,

By wa - ters still, o'er trou - bled sea—

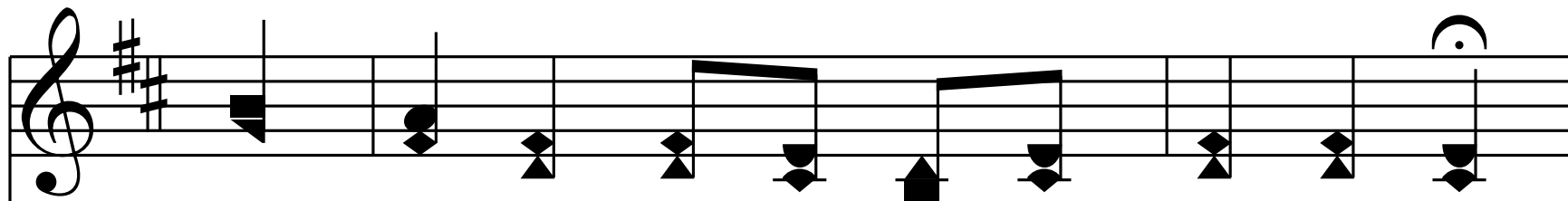
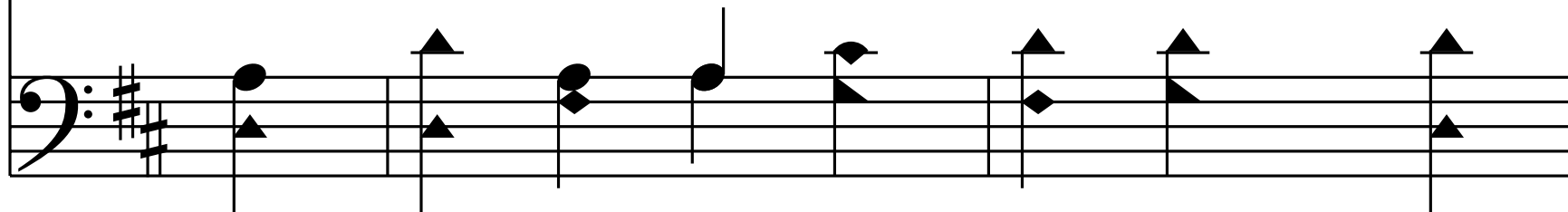
Still tis his hand that lead-eth me.

Refrain

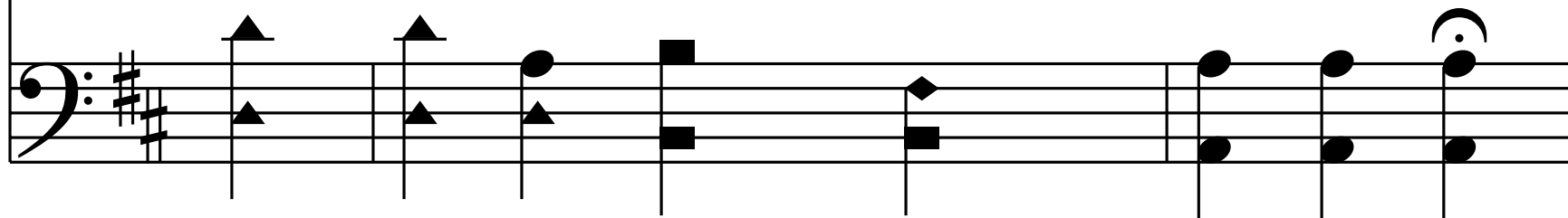
f



He lead - eth me! He lead - eth me!



By his own hand he lead-eth me;



His faith-ful fol-lw'r I would be,

His faith-ful fol-lw'r I would be,

For by his hand he lead-eth me.

For by his hand he lead-eth me.

End of Verse 2

3. Lord, I would clasp thy hand in mine,

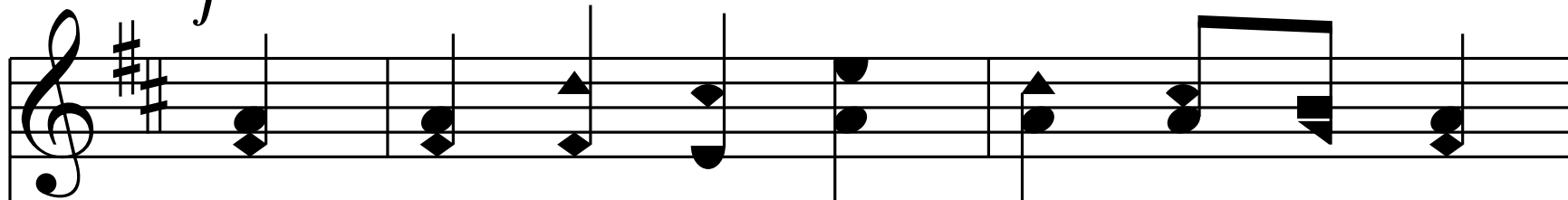
Nor ev - er mur - mor nor re - pine—

Con - tent, what - ev - er lot I see,

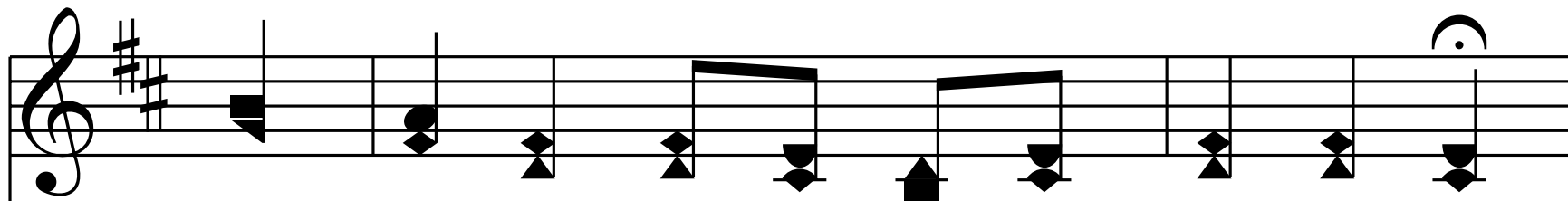
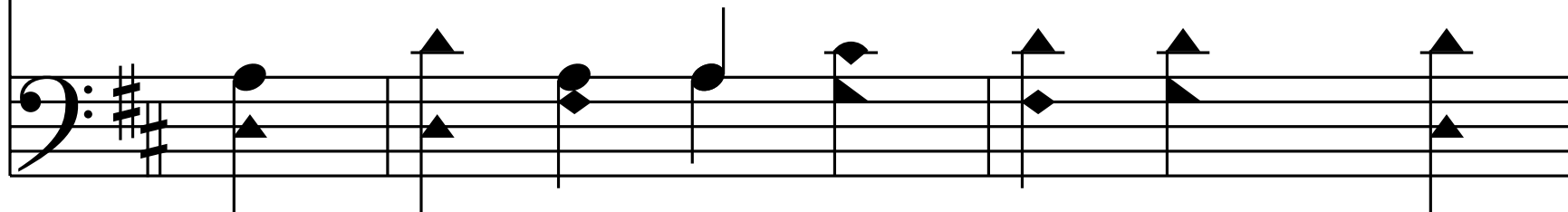
Since 'tis my God that lead-eth me.

Refrain

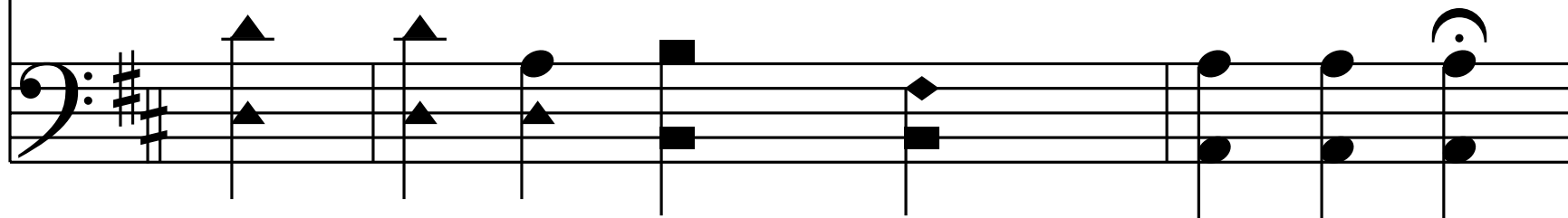
f

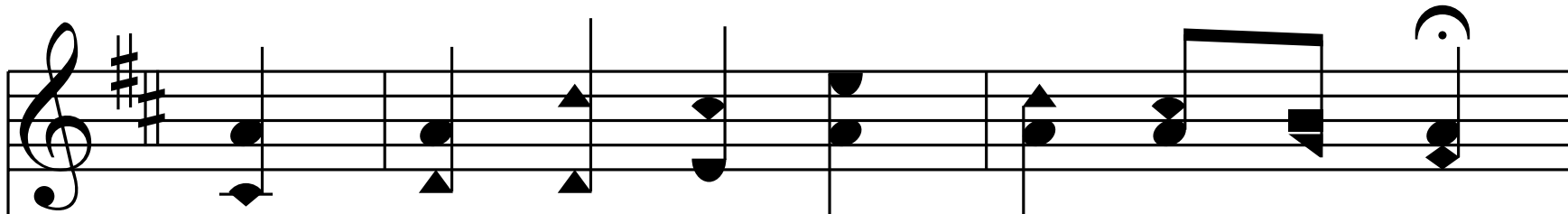


He lead - eth me! He lead - eth me!

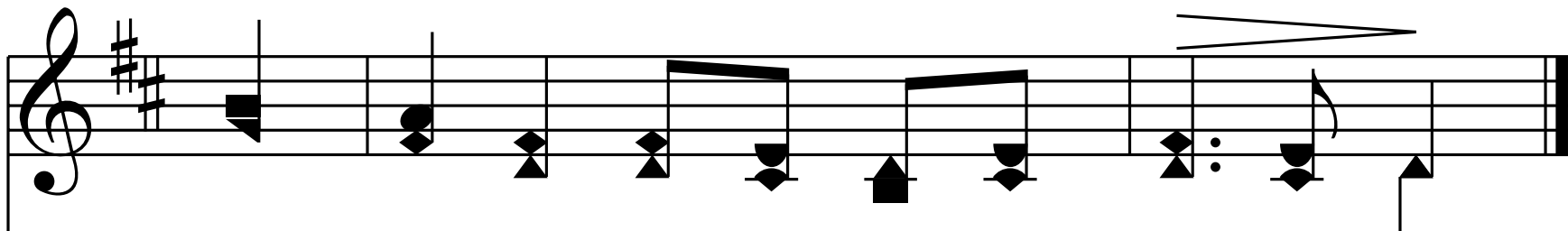
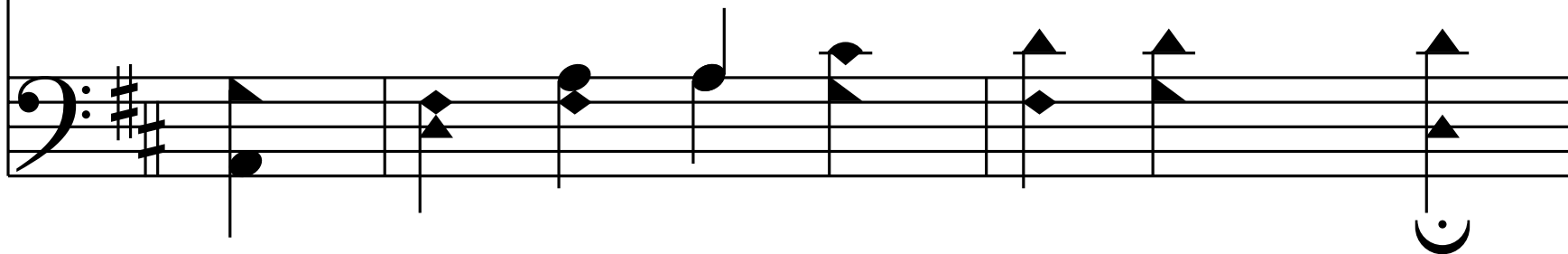


By his own hand he lead-eth me;

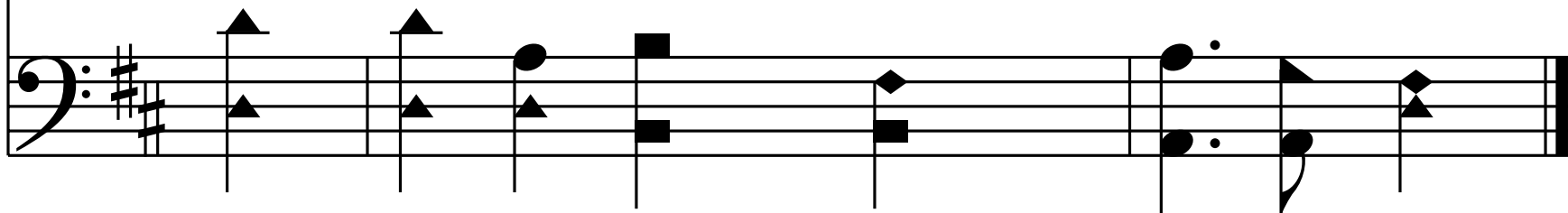




His faith-ful fol-lw'r I would be,



For by his hand he lead-eth me.



End of Verse 3

4. And when my task on earth is done,

This musical system features a treble and bass staff in G major (one sharp) and 4/4 time. The treble staff begins with a treble clef, a key signature of one sharp (F#), and a 4/4 time signature. The melody consists of quarter notes: G4, A4, B4, C5, B4, A4, G4, F#4, E4, D4. The bass staff begins with a bass clef, a key signature of one sharp (F#), and a 4/4 time signature. The bass line consists of quarter notes: G3, F#3, E3, D3, C3, B2, A2, G2, F#2, E2. A fermata is placed over the first G4 in the treble staff and the first G3 in the bass staff. A dynamic marking of mf is placed below the first G4.

When by thy grace, the vic-tory's won,

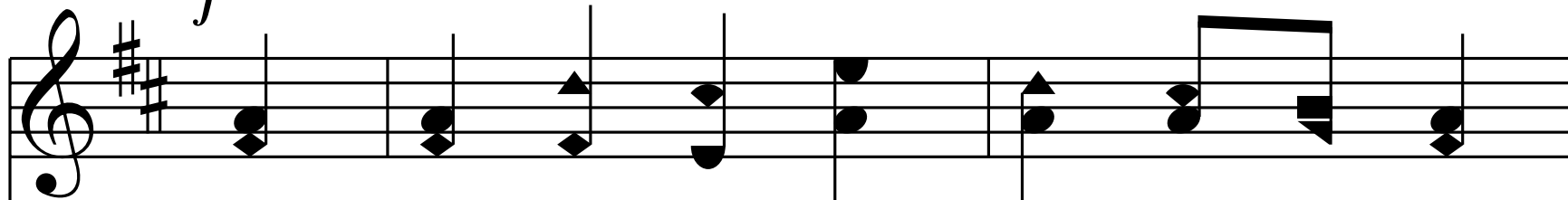
This musical system continues the melody from the first system. The treble staff begins with a treble clef, a key signature of one sharp (F#), and a 4/4 time signature. The melody consists of quarter notes: C5, B4, A4, G4, F#4, E4, D4, C4. The bass staff begins with a bass clef, a key signature of one sharp (F#), and a 4/4 time signature. The bass line consists of quarter notes: G3, F#3, E3, D3, C3, B2, A2, G2, F#2, E2. A fermata is placed over the final C4 in the treble staff and the final G2 in the bass staff.

E'en death's cold wave I will not flee,

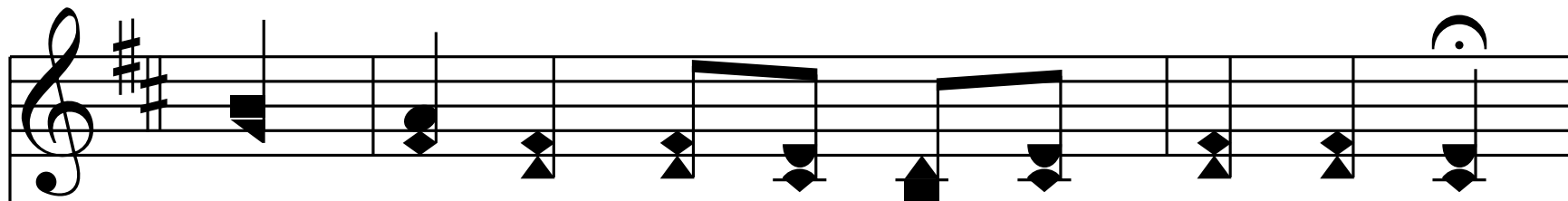
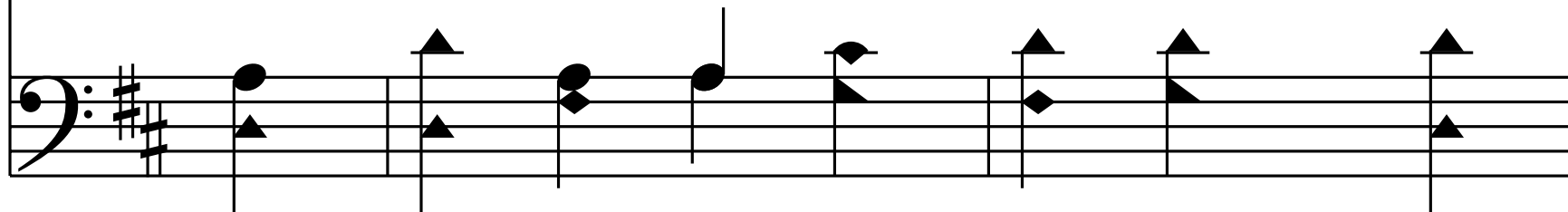
Since tis God's hand that lead-eth me.

Refrain

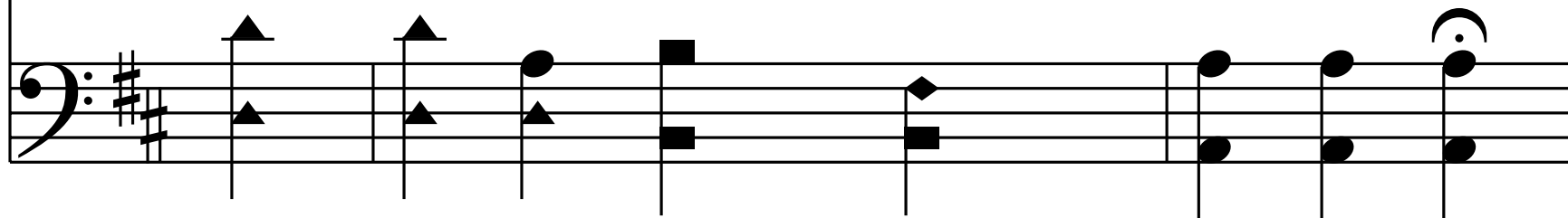
f

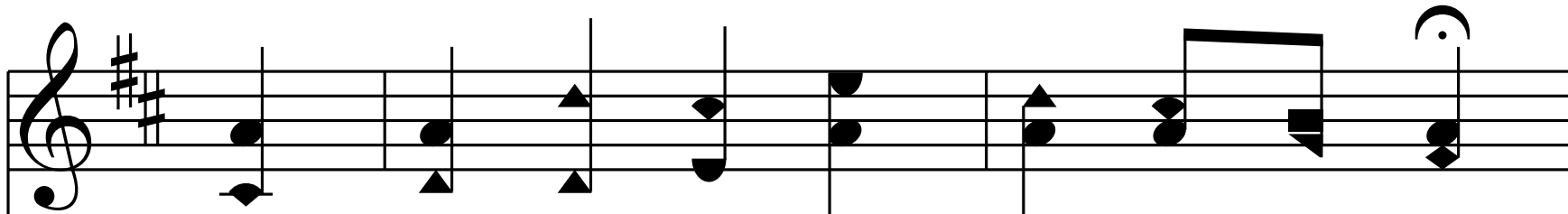


He lead - eth me! He lead - eth me!

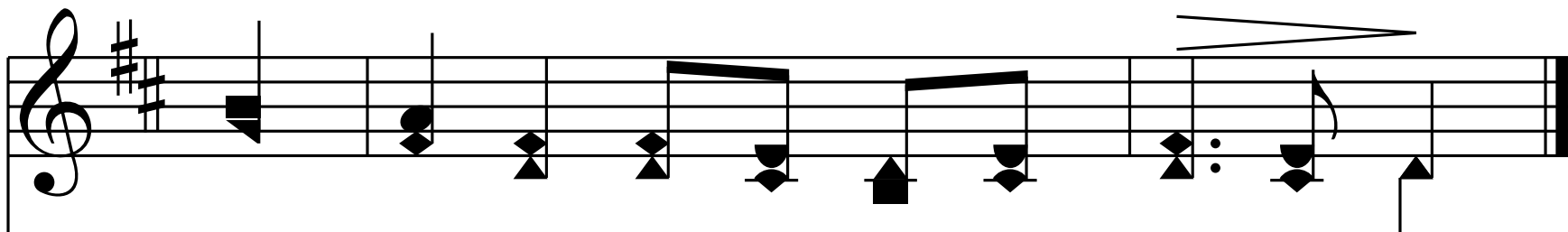
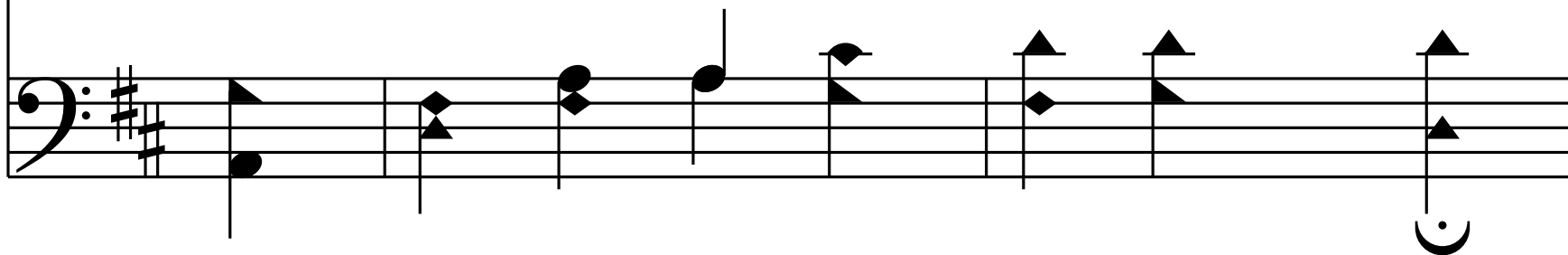


By his own hand he lead-eth me;

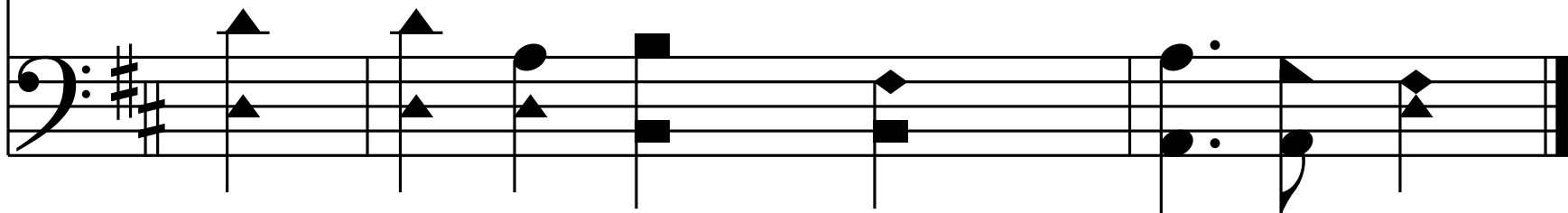




His faith-ful fol-lw'r I would be,



For by his hand he lead-eth me.



End of Hymn