

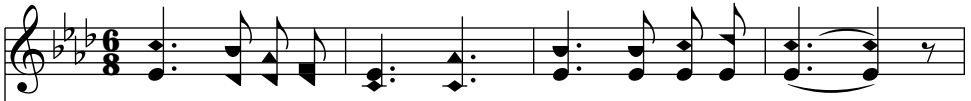
# All Glory Be Thine

*for thou only art holy; for all the nations shall  
come and worship before thee; - Rev. 15:4*

Ab - 2 - MI

Fanny J. Crosby

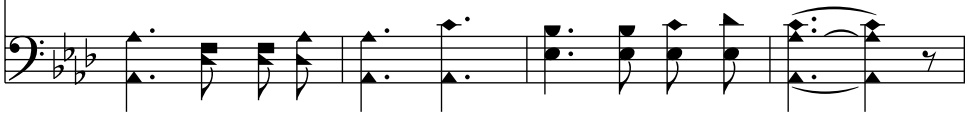
John R. Sweney, 1909



1. Thou on-ly art ho - ly,      Thou on - ly the Lord;  
2. Thou on-ly art ho - ly,      In Thee is our trust;  
3. Thou on-ly art ho - ly,      The an - gels in light;



Truth, mer - cy and judg - ment      Shine forth in Thy word.  
Thy laws are un - chang - ing,      Thy stat-utes are just.  
With proph-ets and mar - tyrs      Their an - thems u - nite.



Thou rul-est and reign - est,      All oth - ers a - bove;  
All na-tions and peo - ple      Be - fore Thee shall fall;  
Thou on-ly art ho - ly      O An - cient of days;



Thy throne is e - ter - nal,      Thy scep-tre is love.  
The Fath - er, Re - deem - er,      And Sav - ior of all.  
The bound-less cre - a - tion      Is filled with Thy praise.



*Chorus*

Thy throne is e - ter - nal Thy king-dom di - vine.

The first system of the chorus features two staves. The treble staff contains a vocal line with lyrics and a piano accompaniment of chords. The bass staff provides a harmonic foundation with chords and a melodic line. The key signature has two flats, and the time signature is 4/4. The lyrics are: "Thy throne is e - ter - nal Thy king-dom di - vine."

Hence - forth and for - ev - er All glo - ry be Thine.

The second system of the chorus continues the musical and lyrical themes. It features the same two-staff structure. The lyrics are: "Hence - forth and for - ev - er All glo - ry be Thine."